

Need a Mortgage in principle to make offers? Call us now for quick assistance!  
0121 775 0101



Do you need to sell? Start your journey now! Call us we can help.  
0121 775 0101



**SCAN FOR MORE INFO**  
**SIZE** - 1571 Sq Ft  
**TENURE** - Freehold  
**COUNCIL TAX** - Solihull Metropolitan Borough Council - D  
**BROADBAND** - Upload Max 1000Mbps Download Max 1800Mbps  
**MOBILE SERVICES** - EE - 87%, 3 - 82%, Vodafone - 82%, O2 - 80%  
**EPC** - C - 69  
**PARKING** - For at least 4 Cars  
**FLOODRISK** - Very Low  
**SERVICES** - Mains  
**COVENANTS** - N/A

## 28 Ulverley Green Road

Solihull, B92 8BQ  
Offers in the Region of £475,000

Situated on Ulverley Green Road, this recently renovated semi-detached house offers a perfect blend of modern living and traditional comfort. This delightful home is ready to move into and is decorated throughout in neutral tones, making it a blank canvas for your personal touch. With its excellent location and thoughtful design, this property is a must-see for anyone seeking a spacious family home in Solihull.

### FEATURES

- Refurbished & Extended Semi-Detached Property
- Offered With No Upward Chain
- Welcoming Entrance Hallway with Ground Floor Shower Room
- Lounge with Bay Window to Front
- Extended Dining Kitchen with Integrated Appliances
- Two Double Bedrooms & Third Single
- Modern Family Bathroom
- Second Floor Double Bedroom with Separate W.C.
- Private Rear Garden
- Ample Driveway Parking, Single Garage & Useful Side Passageway
- Convenient Location

Are you an investor interested in expanding your portfolio?

Call 0121 775 0101 to provide your investment criteria for alerts.



SCAN TO VIEW OUR WEEKLY FILMS & SUBSCRIBE

### Sneak Peeks

Every week, we unveil "Sneak Peeks," a feature showcasing exclusive properties before they hit Rightmove and other platforms.

### The Landlord Club

Join our Landlord Club for weekly updates on legislation, market trends, and our Letting Director's 'Investment Pick of the Week' for optimal ROI.

### HTSPMD

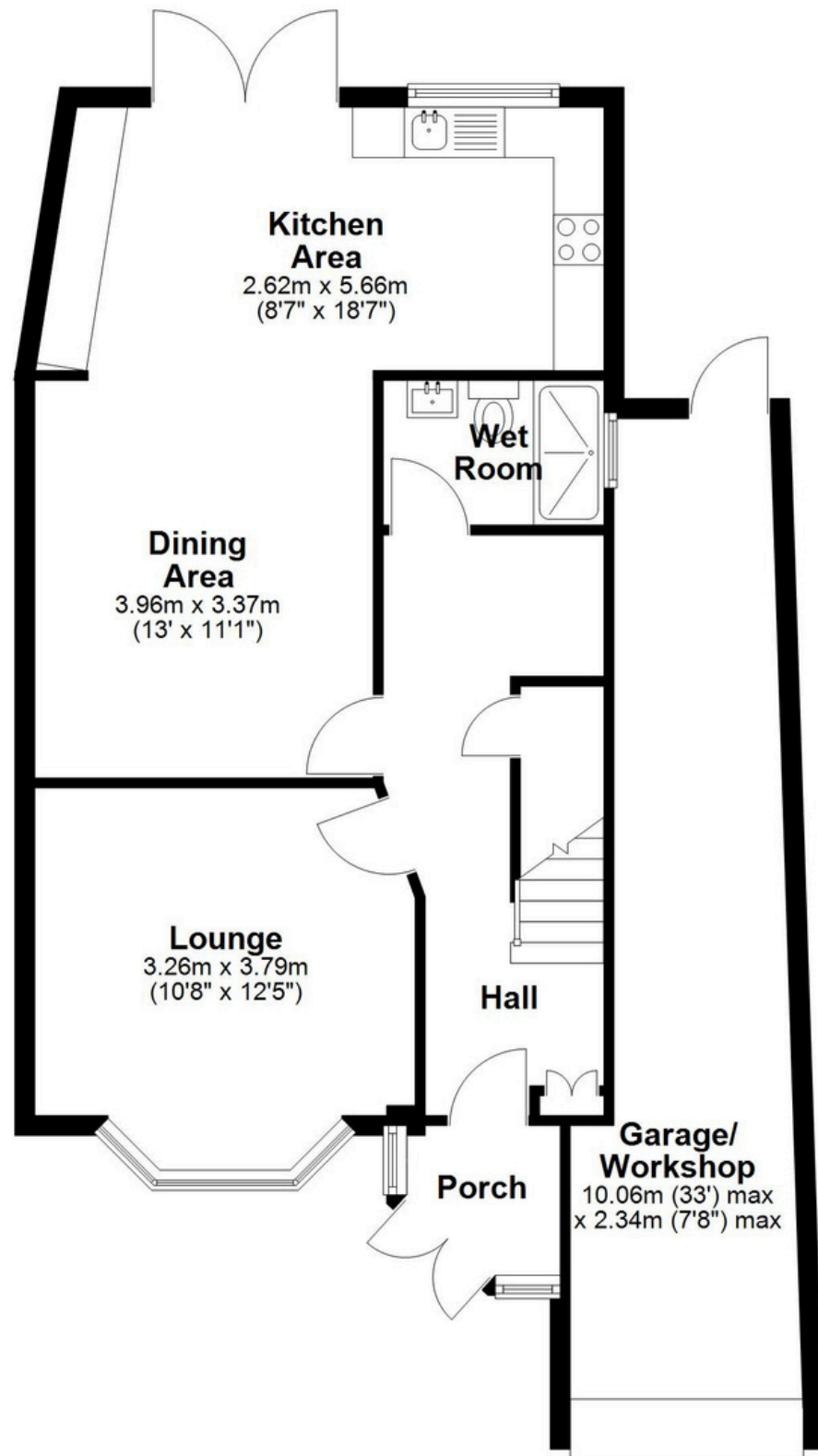
Tune into 'How's The Solihull Property Market Dom' weekly for a quick, insightful snapshot of the market.

### The Mortgage Update

Get weekly insights and the best deals with our Mortgage Update, your shortcut to navigating the complex mortgage landscape confidently.

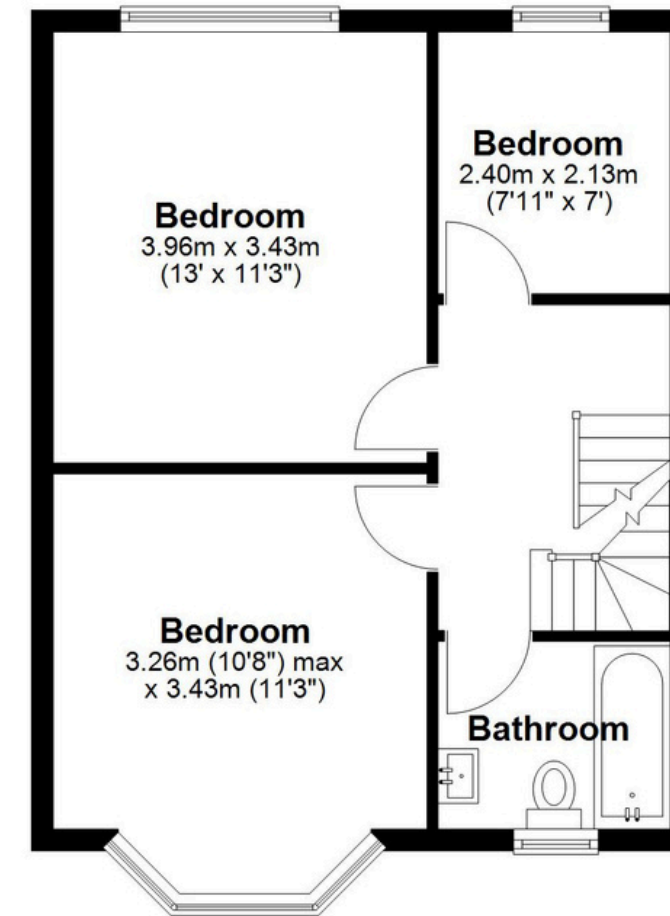
### Ground Floor

Approx. 78.3 sq. metres (842.8 sq. feet)



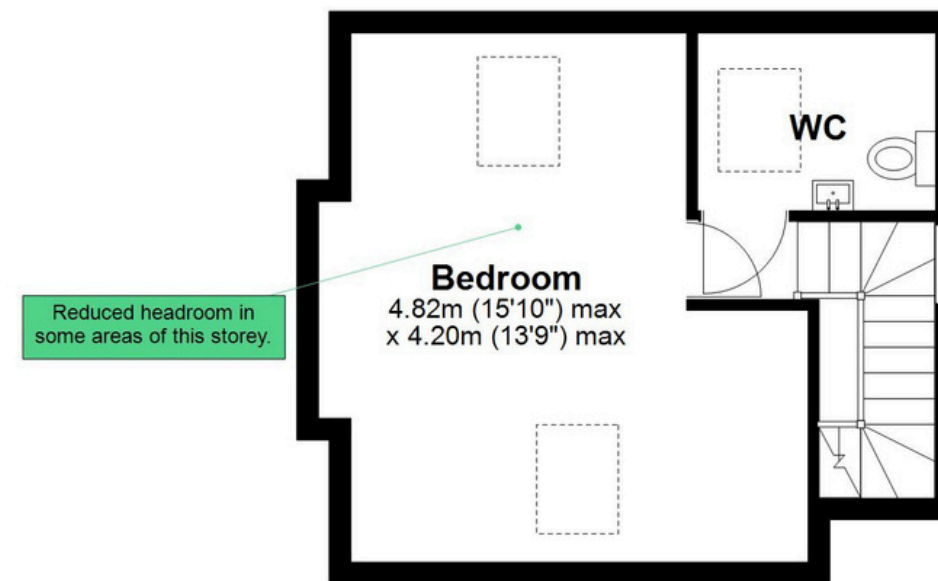
### First Floor

Approx. 41.8 sq. metres (450.2 sq. feet)



### Second Floor

Approx. 25.9 sq. metres (278.5 sq. feet)



Total area: approx. 146.0 sq. metres (1571.5 sq. feet)

This floor plan is for illustration purposes only, this is not intended to be a measured/scaled survey or comply with RICS guidelines. All measurements (including total floor area) openings, orientation and floor area are approximate. No details are guaranteed, they cannot be relied upon for any purpose and do not form part of any agreement. A party must rely upon its own inspection(s). No responsibility is taken for any error, omission, or mis-statement.  
Plan produced using PlanUp.