

Need a Mortgage in principle to make offers? Call us now for quick assistance!
0121 775 0101



Do you need to sell? Start your journey now! Call us we can help.
0121 775 0101



SCAN FOR MORE INFO
SIZE - 764 Sq Ft
TENURE - Leasehold with 124 Years Remaining
SERVICE CHARGE - £1,600 per annum
GROUND RENT - £325.42 per annum
COUNCIL TAX - Birmingham City Council - B
BROADBAND - Upload Max 1800Mbps Download Max 1000Mbps
MOBILE SERVICES - EE - 80%, 3 - 75%, 02 - 74%, Vodafone - 74%
EPC - C - 81
PARKING - 1 Allocated Parking Space
FLOODRISK - Very Low
SERVICES - Mains
COVENANTS - N/A

Apartment 26 Kensington Court

5c Highfield Road, Edgbaston, B15 3EF
Offers Over £250,000

Situated in the highly sought-after area of Birmingham, this modern second-floor apartment offers a delightful blend of comfort and convenience. With no upward chain, this property is ideal for those eager to embrace a lively lifestyle in Edgbaston.

FEATURES

- Ideal for Professionals Seeking Stylish Low-Maintenance City Living
- Second Floor Apartment
- Open Plan Living/Kitchen Area with Juliet Balcony
- Principal Bedroom with Fitted Wardrobes & En-Suite Shower Room
- Second Good Sized Bedroom with Fitted Wardrobe
- Modern Bathroom
- Spacious Entrance Hall with Storage Cupboard
- Secure Allocated Parking Space
- Excellent Location with Easy Access to Birmingham City Centre

Are you an investor interested in expanding your portfolio?

Call 0121 775 0101 to provide your investment criteria for alerts.



SCAN TO VIEW OUR WEEKLY FILMS & SUBSCRIBE

Sneak Peeks

Every week, we unveil "Sneak Peeks," a feature showcasing exclusive properties before they hit Rightmove and other platforms.

The Landlord Club

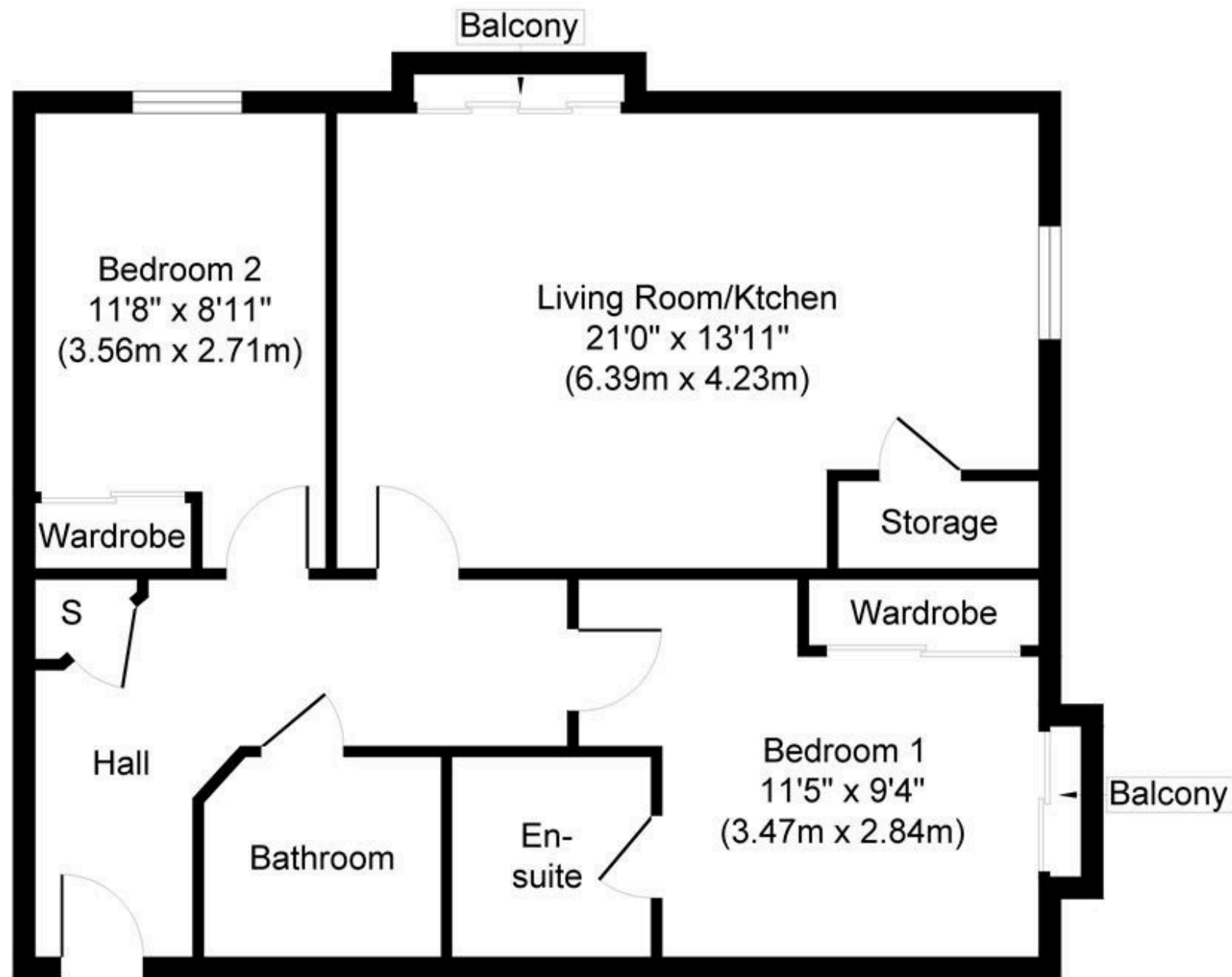
Join our Landlord Club for weekly updates on legislation, market trends, and our Letting Director's 'Investment Pick of the Week' for optimal ROI.

HTSPMD

Tune into 'How's The Solihull Property Market Dom' weekly for a quick, insightful snapshot of the market.

The Mortgage Update

Get weekly insights and the best deals with our Mortgage Update, your shortcut to navigating the complex mortgage landscape confidently.



Top Floor
Approximate Floor Area
764 sq. ft
(71.00 sq. m)

Whilst every attempt has been made to ensure the accuracy of the floor plan contained here, measurements of doors, windows, rooms and any other items are approximate and no responsibility is taken for any error, omission, or mis-statement. The measurements should not be relied upon for valuation, transaction and/or funding purposes. This plan is for illustrative purposes only and should be used as such by any prospective purchaser or tenant.

The services, systems and appliances shown have not been tested and no guarantee as to their operability or efficiency can be given.

Copyright V360 Ltd 2025 | www.houseviz.com