

Need a Mortgage in principle to make offers? Call us now for quick assistance!
0121 775 0101



Do you need to sell? Start your journey now! Call us we can help.
0121 775 0101



SCAN FOR MORE INFO
SIZE - 702 Sq Ft
TENURE - Freehold
COUNCIL TAX - Solihull Metropolitan Borough Council - C
BROADBAND - Upload Max 1000Mbps Download Max 1800Mbps
MOBILE SERVICES - 3 - 84%, EE - 82%, O2 - 80%, Vodafone - 78%
EPC - E 52
PARKING - For at least 2 Cars
FLOODRISK - Very Low
SERVICES - Mains
COVENANTS - N/A

44 Wherretts Well Lane

Solihull, B91 2SD
Offers in the Region of £320,000

Situated on Wherretts Well Lane, this charming 1930s semi-detached house presents an excellent opportunity for first-time buyers looking to make their mark on a property. This delightful home, while in need of a little updating, is a perfect canvas for those looking to create their ideal living space. With its charming features and excellent location, it is an opportunity not to be missed.

FEATURES

- Character Semi-Detached Property
- Spacious Lounge
- Versatile Second Reception Room
- Kitchen Accessed from Hall & Reception Room
- Dual Aspect Principal Bedroom
- Second Bedroom
- Family Bathroom
- Private Rear Garden
- Driveway Parking
- Popular Damson Parkway Development

Are you an investor interested in expanding your portfolio?

Call 0121 775 0101 to provide your investment criteria for alerts.



Sneak Peeks

Every week, we unveil "Sneak Peeks," a feature showcasing exclusive properties before they hit Rightmove and other platforms.

The Landlord Club

Join our Landlord Club for weekly updates on legislation, market trends, and our Letting Director's 'Investment Pick of the Week' for optimal ROI.

HTSPMD

Tune into 'How's The Solihull Property Market Dom' weekly for a quick, insightful snapshot of the market.

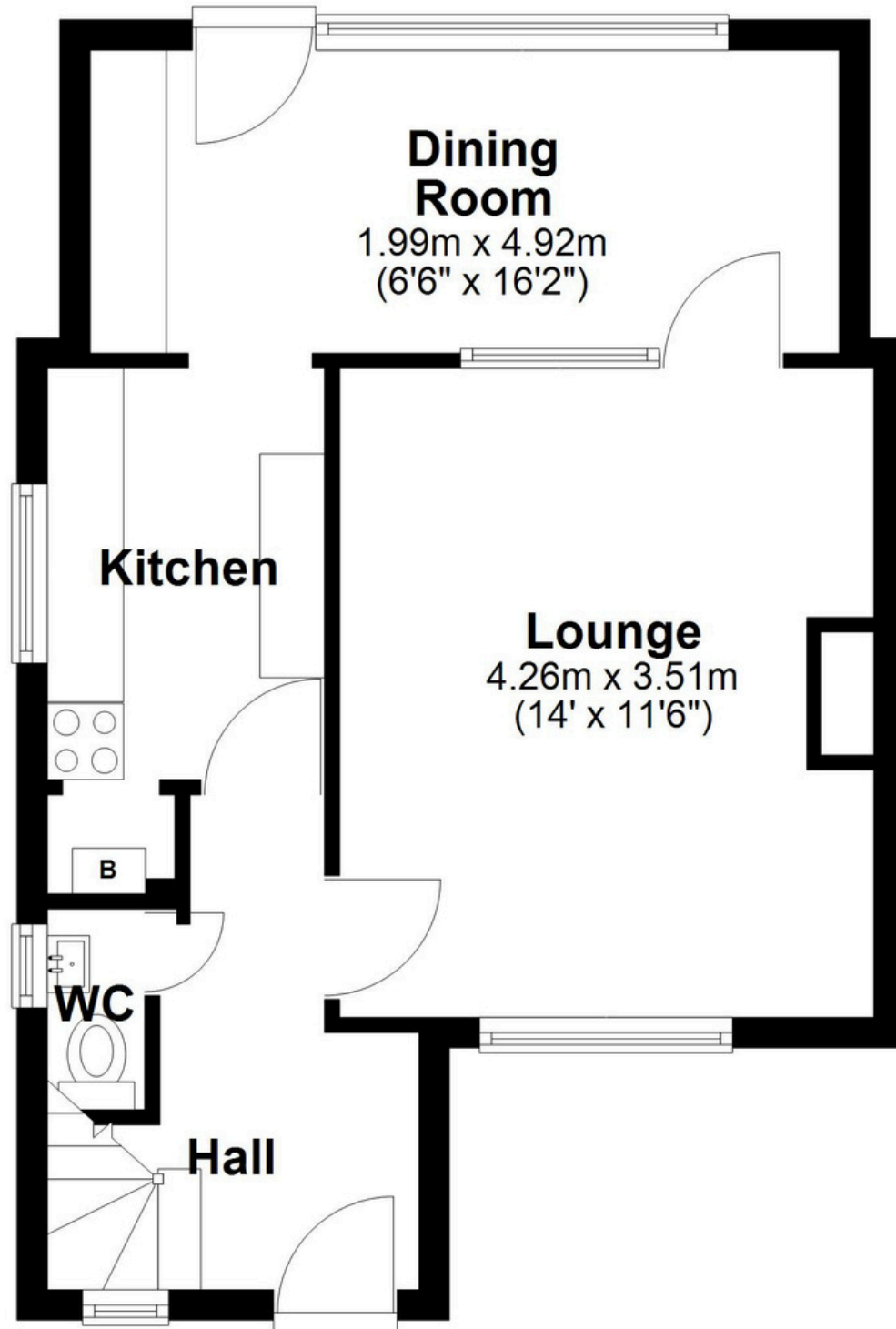
The Mortgage Update

Get weekly insights and the best deals with our Mortgage Update, your shortcut to navigating the complex mortgage landscape confidently.

SCAN TO VIEW OUR WEEKLY FILMS & SUBSCRIBE

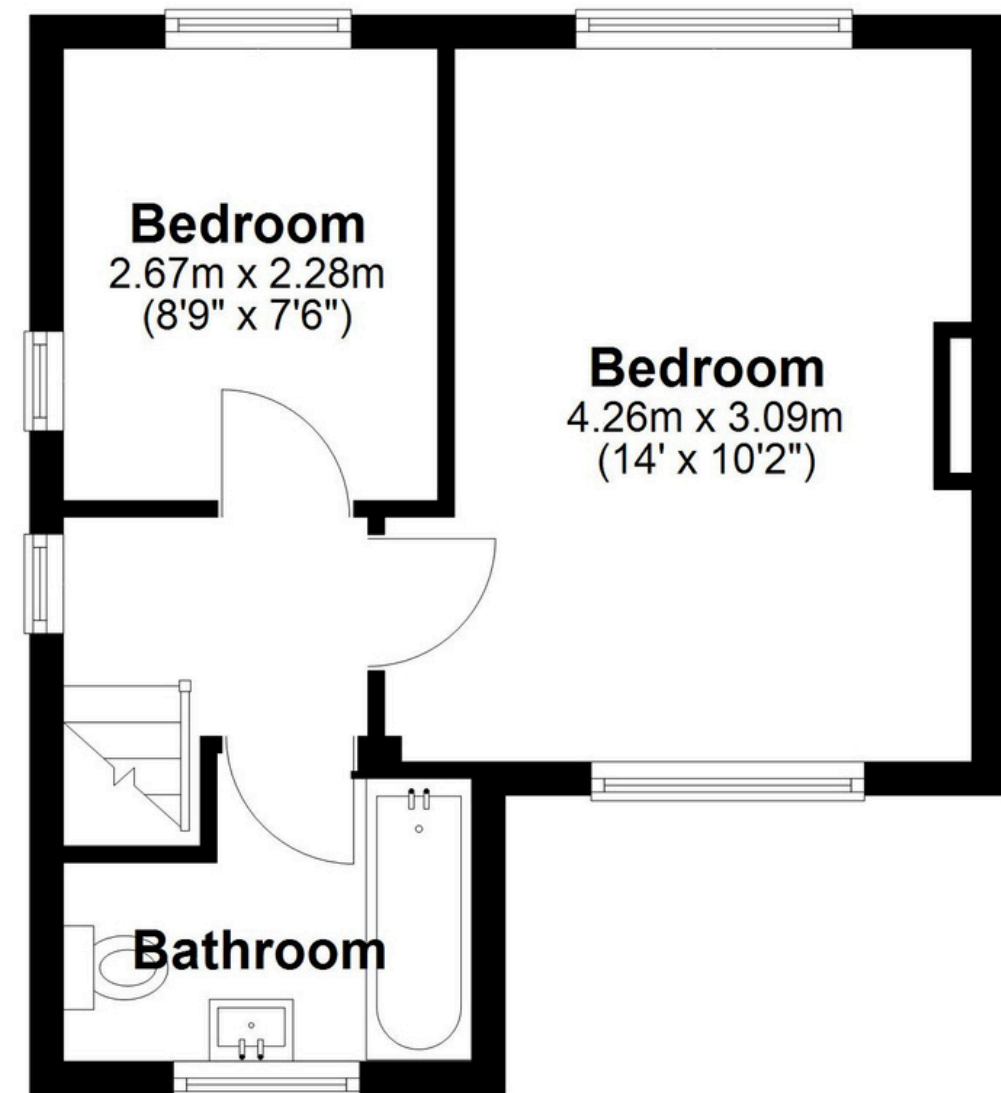
Ground Floor

Approx. 37.8 sq. metres (406.5 sq. feet)



First Floor

Approx. 27.5 sq. metres (296.4 sq. feet)



Total area: approx. 65.3 sq. metres (702.9 sq. feet)

This floor plan is for illustration purposes only, this is not intended to be a measured/scaled survey or comply with RICS guidelines. All measurements (including total floor area) openings, orientation and floor area are approximate. No details are guaranteed, they cannot be relied upon for any purpose and do not form part of any agreement. A party must rely upon its own inspection(s). No responsibility is taken for any error, omission, or mis-statement.

Plan produced using PlanUp.