

Need a Mortgage in principle to make offers? Call us now for quick assistance!
0121 775 0101



Do you need to sell? Start your journey now! Call us we can help.
0121 775 0101



SCAN FOR MORE INFO
SIZE - 594 Sq Ft
TENURE - Leasehold with 130 years remaining
COUNCIL TAX - Solihull Metropolitan Borough Council - B
BROADBAND - Upload Max 100Mbps Download Max 1000Mbps
MOBILE SERVICES - EE - 87%, 3 - 82%, Vodafone - 82%, 02 - 80%
EPC - C - 71
PARKING - 1 Allocated Parking Space and Unallocated Spaces
HEATING - Gas Central Heating
FLOODRISK - Very Low
SERVICES - Mains
COVENANTS - N/A

17 Greenland Rise

Solihull, B92 9LF
Offers in the region of £170,000

Located in a quiet cul-de-sac within the sought-after Rowood development, this charming first floor maisonette presents an excellent opportunity for both first-time buyers and investors. The property has been recently updated, ensuring a modern and inviting living space and is offered with no upward chain.

FEATURES

- First Floor Maisonette
- Offered With No Upward Chain
- Ideal First Time Buyer or Investor Opportunity
- Lounge/Dining Room
- Fitted Kitchen
- Two Bedrooms
- Family Bathroom
- Quiet Cul-de-Sac Location
- 1 Allocated Parking Space
- Plenty of Unallocated Parking Spaces
- Convenient Location

Are you an investor interested in expanding your portfolio?

Call 0121 775 0101 to provide your investment criteria for alerts.



SCAN TO VIEW OUR WEEKLY FILMS & SUBSCRIBE

Sneak Peeks

Every week, we unveil "Sneak Peeks," a feature showcasing exclusive properties before they hit Rightmove and other platforms.

The Landlord Club

Join our Landlord Club for weekly updates on legislation, market trends, and our Letting Director's 'Investment Pick of the Week' for optimal ROI.

HTSPMD

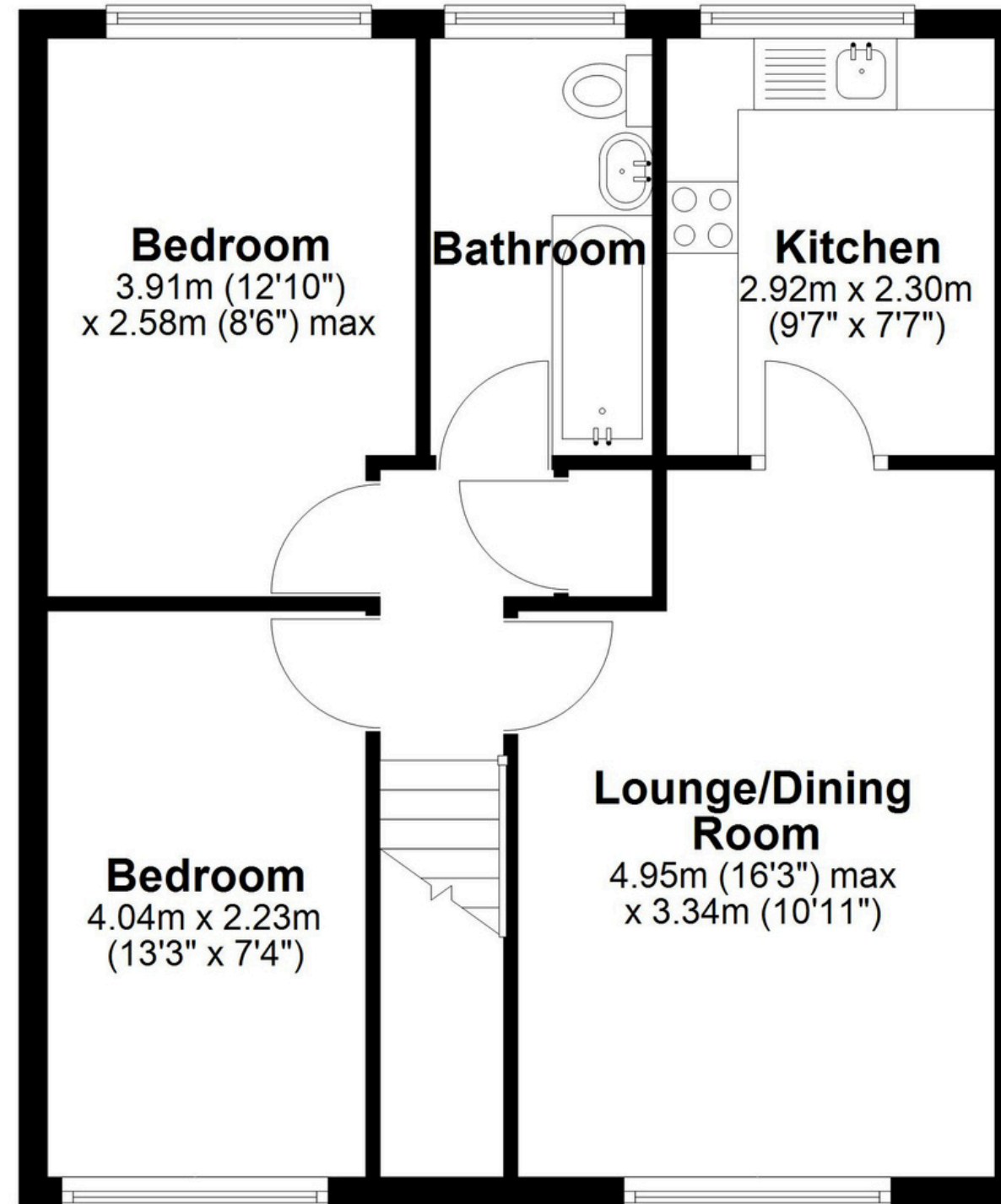
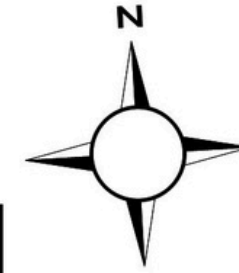
Tune into 'How's The Solihull Property Market Dom' weekly for a quick, insightful snapshot of the market.

The Mortgage Update

Get weekly insights and the best deals with our Mortgage Update, your shortcut to navigating the complex mortgage landscape confidently.

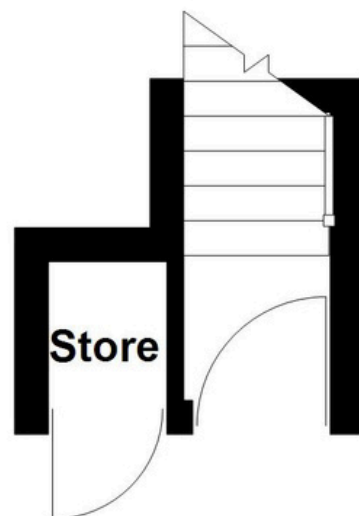
First Floor

Approx. 53.1 sq. metres (571.2 sq. feet)



Ground Floor

Approx. 2.1 sq. metres (22.9 sq. feet)



Total area: approx. 55.2 sq. metres (594.1 sq. feet)

This floor plan is for illustration purposes only, this is not intended to be a measured/scaled survey or comply with RICS guidelines. All measurements (including total floor area) openings, orientation and floor area are approximate. No details are guaranteed, they cannot be relied upon for any purpose and do not form part of any agreement. A party must rely upon its own inspection(s). No responsibility is taken for any error, omission, or mis-statement.

Plan produced using PlanUp.