

Need a Mortgage in principle to make offers? Call us now for quick assistance!
0121 775 0101



Do you need to sell? Start your journey now! Call us we can help.
01564 777 314



SCAN FOR MORE INFO
SIZE - 501 Sq Ft
TENURE - Freehold
COUNCIL TAX - Solihull Metropolitan Borough Council - D
BROADBAND - Upload Max 1000Mbps Download Max 1800Mbps
MOBILE - EE - 83%, Vodafone - 77%, 3 - 78%, O2 - 76%
EPC - D - 66
PARKING - Single Space to Front & Single Space at Rear
FLOODRISK - Very Low
SERVICES - Mains
COVENANTS - N/A

1573a Warwick Road

Knowle, B93 9LF
Offers in the Region of £350,000

Situated on Warwick Road, this beautifully presented mid-terrace cottage style property is a true gem. Having undergone a complete refurbishment to a high specification, it is an ideal choice for first-time buyers or those looking to downsize, offering a home that is ready to move straight into. This property combines modern living with charming character, making it a must-see for anyone seeking a lovely home in a desirable location.

FEATURES

- Beautifully Presented Mid Terraced Cottage Style Property
- Lounge with Open Fire
- Stunning Breakfast Kitchen
- Principal Bedroom with Fitted Wardrobes
- Second Bedroom
- Modern Family Bathroom
- Private Rear Garden
- Parking to Front & Rear
- Walking Distance to Knowle High Street
- Ideal for First Time Buyers or Downsizers

Are you an investor interested in expanding your portfolio?

Call 01564 777 314 to provide your investment criteria for alerts.



SCAN TO VIEW OUR WEEKLY FILMS & SUBSCRIBE

Sneak Peeks

Every week, we unveil "Sneak Peeks," a feature showcasing exclusive properties before they hit Rightmove and other platforms.

The Landlord Club

Join our Landlord Club for weekly updates on legislation, market trends, and our Letting Director's 'Investment Pick of the Week' for optimal ROI.

HTSPMD

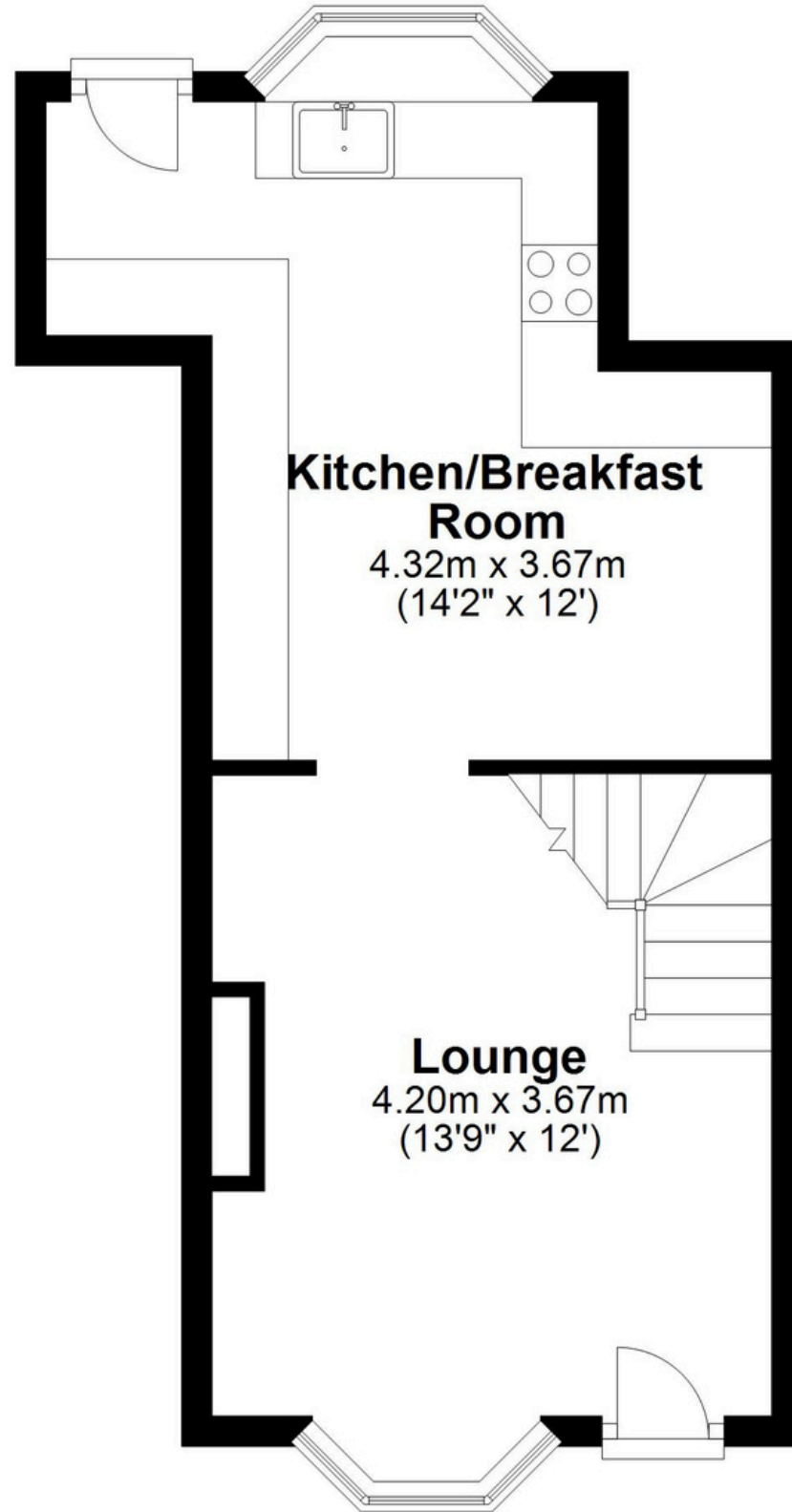
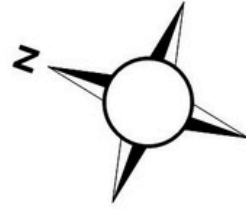
Tune into 'How's The Solihull Property Market Dom' weekly for a quick, insightful snapshot of the market.

The Mortgage Update

Get weekly insights and the best deals with our Mortgage Update, your shortcut to navigating the complex mortgage landscape confidently.

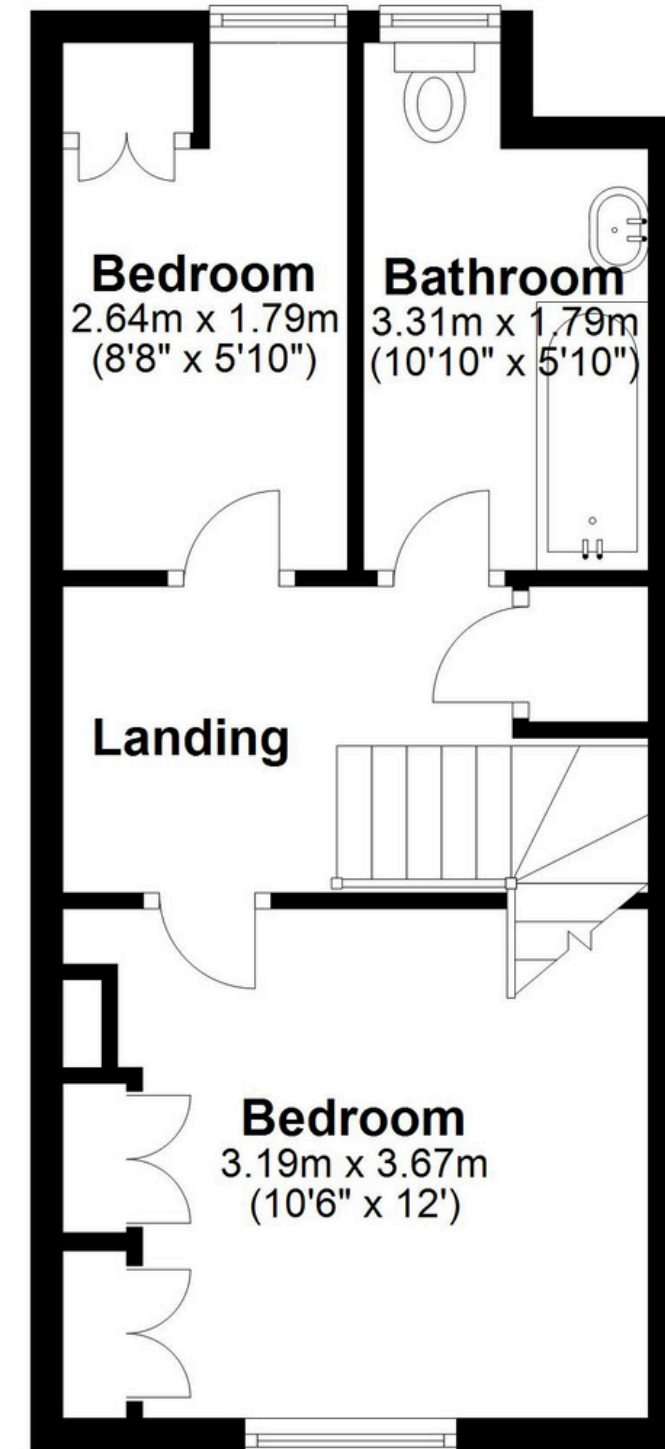
Ground Floor

Approx. 15.6 sq. metres (167.5 sq. feet)
(excluding Kitchen/Breakfast Room)



First Floor

Approx. 31.0 sq. metres (334.1 sq. feet)



Total area: approx. 46.6 sq. metres (501.6 sq. feet)

This floor plan is for illustration purposes only, this is not intended to be a measured/scaled survey or comply with RICS guidelines. All measurements (including total floor area) openings, orientation and floor area are approximate. No details are guaranteed, they cannot be relied upon for any purpose and do not form part of any agreement. A party must rely upon its own inspection(s). No responsibility is taken for any error, omission, or mis-statement.

Plan produced using PlanUp.