

Need a Mortgage in principle  
to make offers? Call us now  
for quick assistance!  
**0121 775 0101**



Do you need to sell?  
Start your journey now!  
Call us we can help.  
**0121 775 0101**



**SCAN FOR MORE INFO**  
**SIZE** - 1027 Sq Ft  
**TENURE** - Freehold  
**COUNCIL TAX** - Solihull Metropolitan Borough Council - C  
**BROADBAND** - Upload Max 220Mbps Download Max 1800Mbps  
**MOBILE SERVICES** - EE - 87%, 2 - 82%, Vodafone - 82%, 02 - 80%  
**EPC** - TBC  
**PARKING** - Off Street Parking  
**FLOODRISK** - Very Low  
**SERVICES** - Mains  
**COVENANTS** - N/A

**14 Ansley Way**  
**Solihull, B92 9PA**  
**Offers in the Region of £250,000**

This charming end terraced property presents an excellent opportunity for first-time buyers or investors seeking to expand their property portfolio. In summary, this delightful home offers a blend of comfort and space, making it a must-see for those looking to establish themselves in the vibrant Solihull area.

#### FEATURES

- End Terraced Family Home
- Bright Lounge
- Modern Breakfast Kitchen
- Conservatory
- Three Good Sized Bedrooms
- Family Bathroom & Separate W.C.
- Private South Facing Rear Garden
- Off Road Parking
- Convenient Location

Are you an investor  
interested in expanding your  
portfolio?

**Call 0121 775 0101 to provide your  
investment criteria for alerts.**



SCAN TO VIEW OUR  
WEEKLY FILMS &  
SUBSCRIBE

#### ▶ Sneak Peeks

Every week, we unveil "Sneak Peeks," a feature showcasing exclusive properties before they hit Rightmove and other platforms.

#### ▶ The Landlord Club

Join our Landlord Club for weekly updates on legislation, market trends, and our Letting Director's 'Investment Pick of the Week' for optimal ROI.

#### ▶ HTSPMD

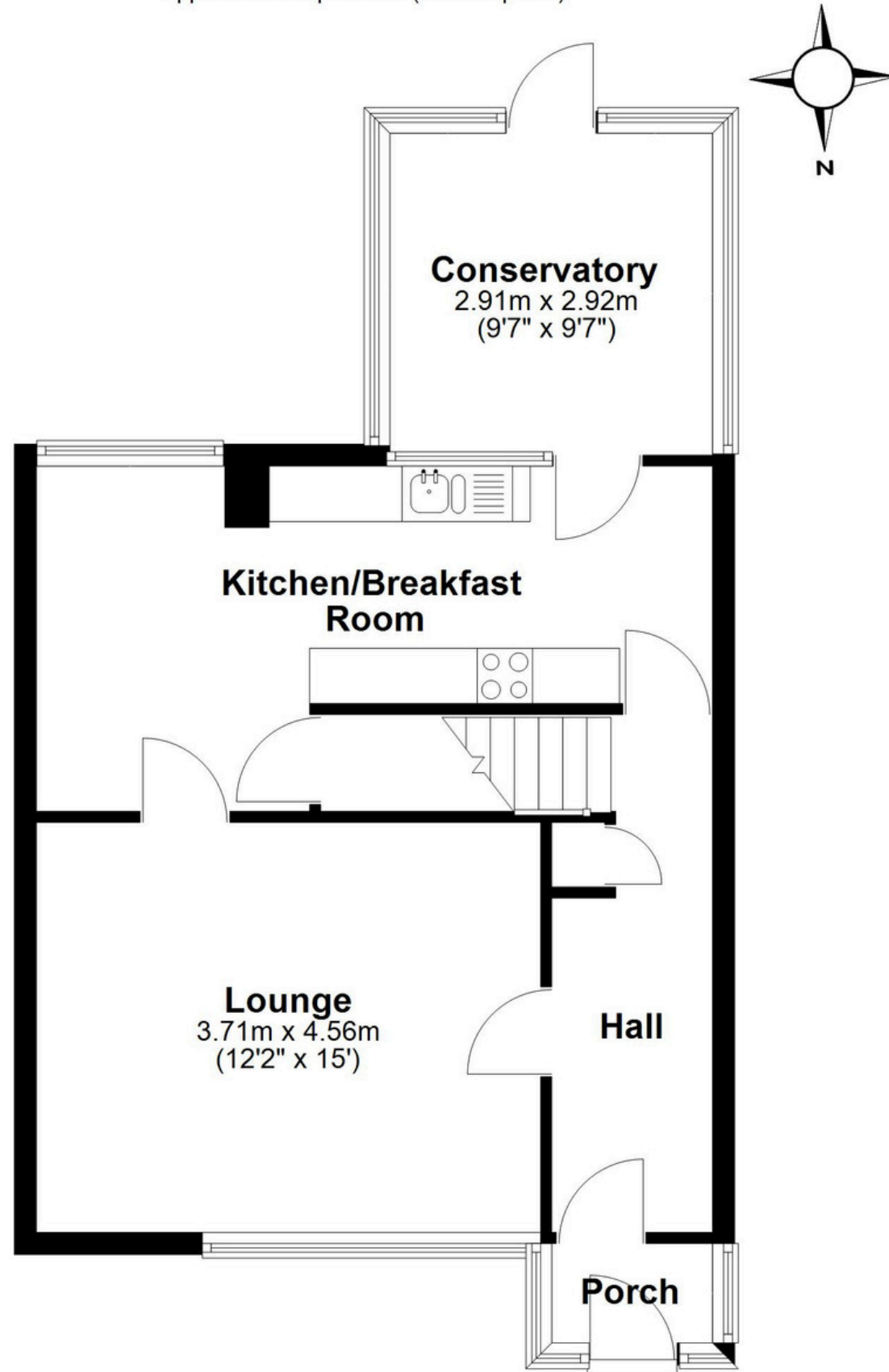
Tune into 'How's The Solihull Property Market Dom' weekly for a quick, insightful snapshot of the market.

#### ▶ The Mortgage Update

Get weekly insights and the best deals with our Mortgage Update, your shortcut to navigating the complex mortgage landscape confidently.

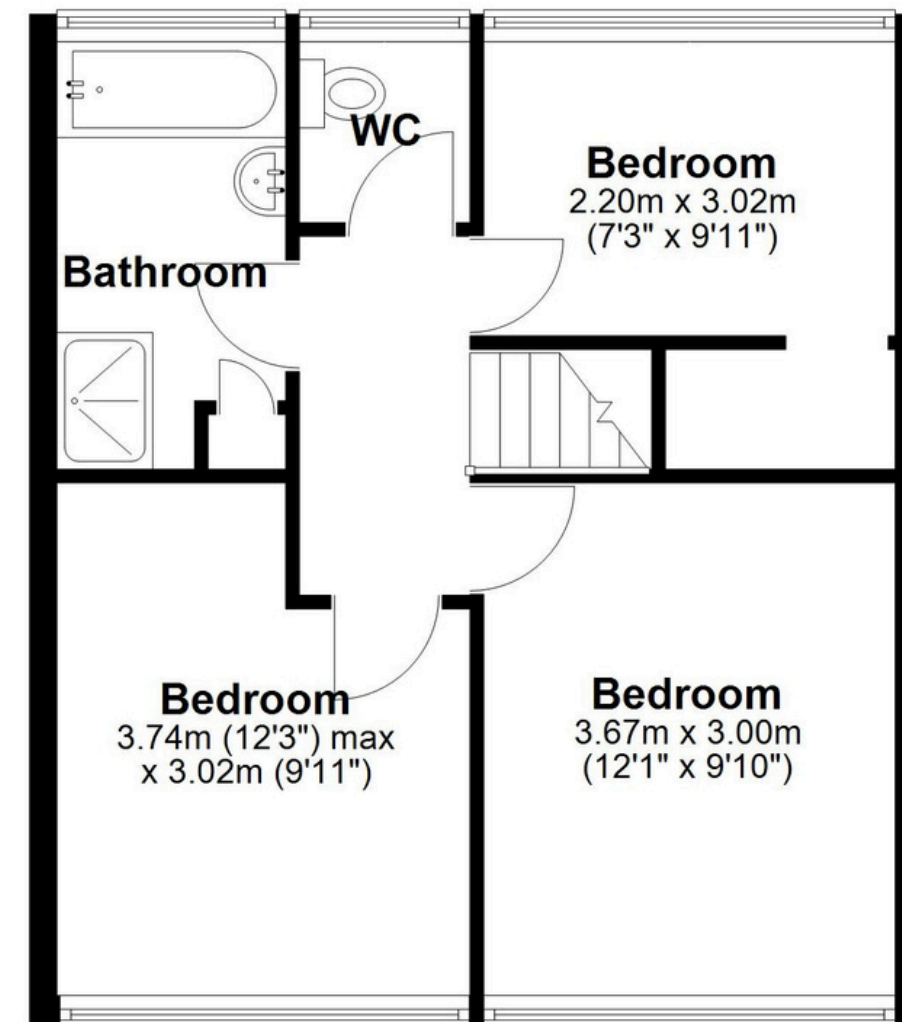
## Ground Floor

Approx. 52.6 sq. metres (566.6 sq. feet)



## First Floor

Approx. 42.8 sq. metres (460.8 sq. feet)



Total area: approx. 95.4 sq. metres (1027.4 sq. feet)

This floor plan is for illustration purposes only, this is not intended to be a measured/scaled survey or comply with RICS guidelines. All measurements (including total floor area) openings, orientation and floor area are approximate. No details are guaranteed, they cannot be relied upon for any purpose and do not form part of any agreement. A party must rely upon its own inspection(s). No responsibility is taken for any error, omission, or mis-statement.

Plan produced using PlanUp.