

Need a Mortgage in principle to make offers? Call us now for quick assistance!
0121 775 0101



Do you need to sell? Start your journey now! Call us we can help.
01564 777 314



59 Glendon Way
Dorridge, B93 8SY
Offers in the Region of £885,000

SCAN FOR MORE INFO
SIZE - 2284 Sq Ft
TENURE - Freehold
COUNCIL TAX - Solihull Metropolitan Borough Council - G
BROADBAND - Upload Max 220Mbps Download Max 1800Mbps
MOBILE - EE - 83%, Vodafone - 79%, 3 - 78%, O2 - 76%
EPC - C - 74
PARKING - Double Garage & Driveway
FLOODRISK - Very Low
SERVICES - Mains
COVENANTS - N/A

A thoughtfully updated detached family home situated in a quiet cul-de-sac location. Offering generous living accommodation, a south east facing landscaped garden and being within easy access excellent access to local amenities and Arden Academy.

FEATURES

- Extended Five Bedroom Detached House
- Three Reception Rooms
- Three Bathrooms Including Two En-Suites
- Stylish Kitchen/Dining Space
- Utility Room
- Landscaped South East Facing Garden
- Double Garage
- Ample Driveway Parking
- Quiet Cul-de-Sac Setting
- Arden Academy Catchment

Are you an investor interested in expanding your portfolio?

Call 01564 777 314 to provide your investment criteria for alerts.



SCAN TO VIEW OUR WEEKLY FILMS & SUBSCRIBE

Sneak Peeks

Every week, we unveil "Sneak Peeks," a feature showcasing exclusive properties before they hit Rightmove and other platforms.

The Landlord Club

Join our Landlord Club for weekly updates on legislation, market trends, and our Letting Director's 'Investment Pick of the Week' for optimal ROI.

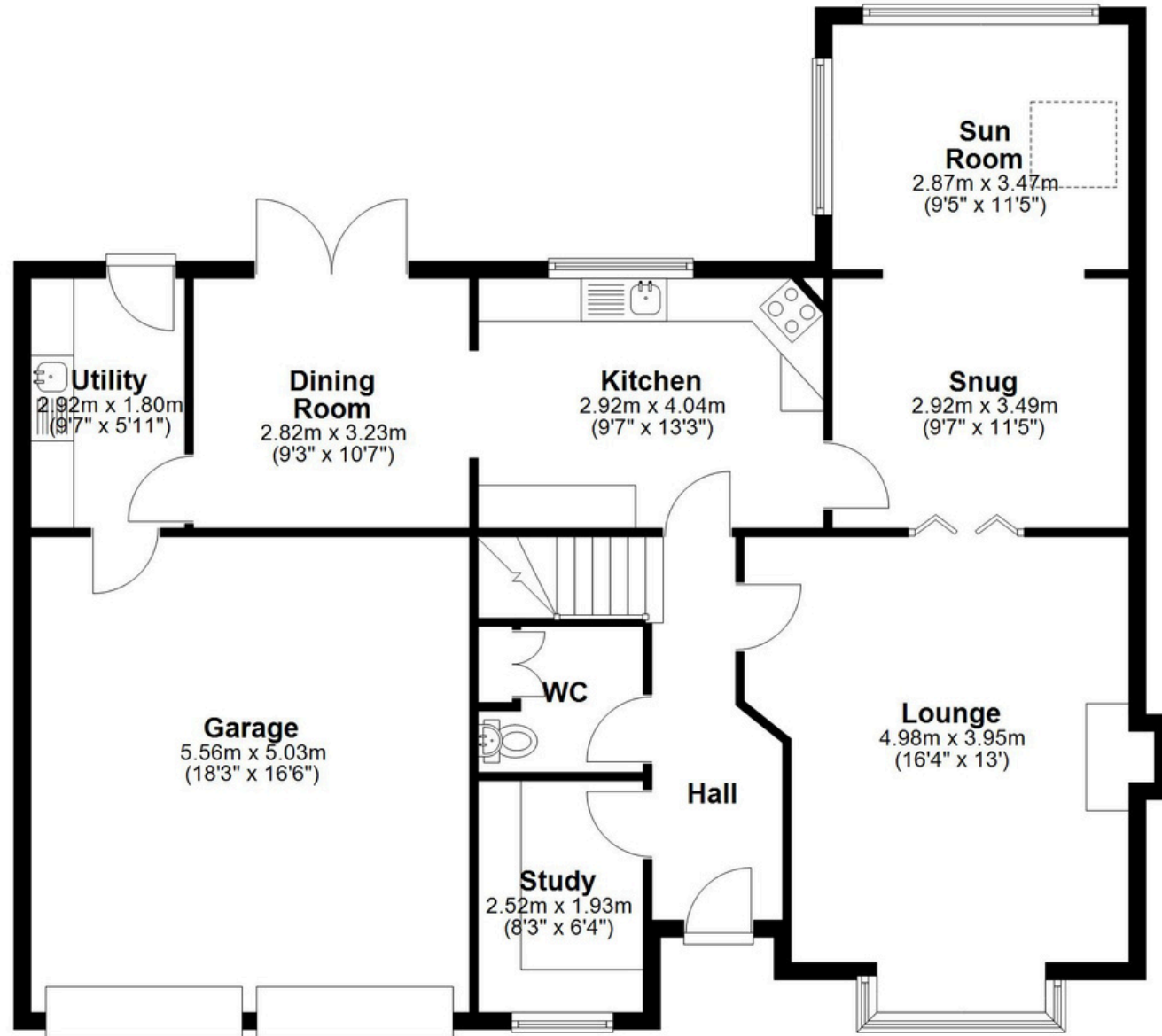
HTSPMD

Tune into 'How's The Solihull Property Market Dom' weekly for a quick, insightful snapshot of the market.

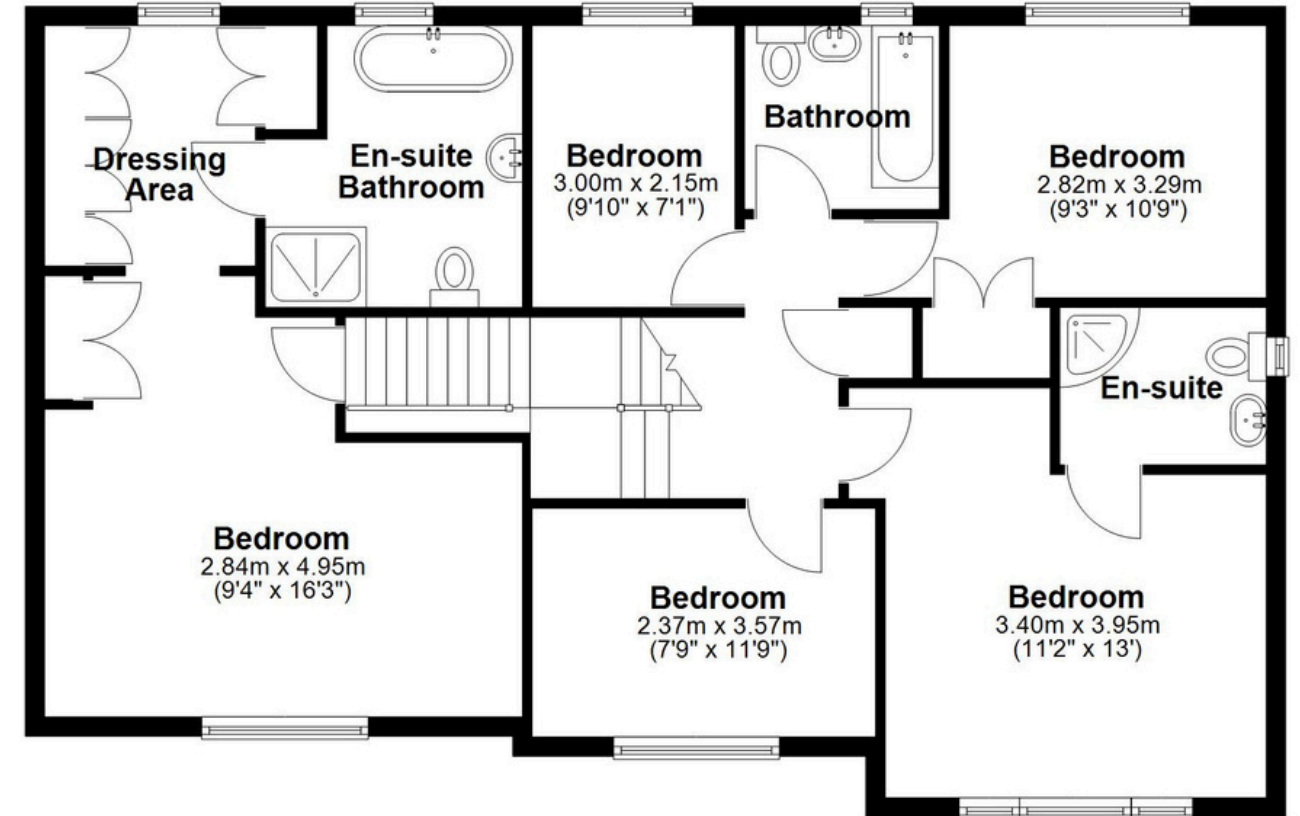
The Mortgage Update

Get weekly insights and the best deals with our Mortgage Update, your shortcut to navigating the complex mortgage landscape confidently.

Ground Floor
 Approx. 117.2 sq. metres (1261.4 sq. feet)



First Floor
 Approx. 95.1 sq. metres (1023.5 sq. feet)



Total area: approx. 212.3 sq. metres (2284.9 sq. feet)

This floor plan is for illustration purposes only, this is not intended to be a measured/scaled survey or comply with RICS guidelines. All measurements (including total floor area) openings, orientation and floor area are approximate. No details are guaranteed, they cannot be relied upon for any purpose and do not form part of any agreement. A party must rely upon its own inspection(s). No responsibility is taken for any error, omission, or misstatement.

Plan produced using PlanUp.