

**Need a Mortgage in principle to make offers?** Call us now for quick assistance!  
**0121 775 0101**



**Do you need to sell? Start your journey now!** Call us we can help.  
**01564 777 314**



**59 Glendon Way**  
**Dorridge, B93 8SY**  
**Offers in the Region of £885,000**

**SCAN FOR MORE INFO**  
**SIZE** - 2284 Sq Ft  
**TENURE** - Freehold  
**COUNCIL TAX** - Solihull Metropolitan Borough Council - G  
**BROADBAND** - Upload Max 220Mbps Download Max 1800Mbps  
**MOBILE** - EE - 83%, Vodafone - 79%, 3 - 78%, O2 - 76%  
**EPC** - C - 74  
**PARKING** - Double Garage & Driveway  
**FLOODRISK** - Very Low  
**SERVICES** - Mains  
**COVENANTS** - N/A

A thoughtfully updated detached family home situated in a quiet cul-de-sac location. Offering generous living accommodation, a south east facing landscaped garden and being within easy access excellent access to local amenities and Arden Academy.

**FEATURES**

- Extended Five Bedroom Detached House
- Three Reception Rooms
- Three Bathrooms Including Two En-Suites
- Stylish Kitchen/Dining Space
- Utility Room
- Landscaped South East Facing Garden
- Double Garage
- Ample Driveway Parking
- Quiet Cul-de-Sac Setting
- Arden Academy Catchment

**Are you an investor interested in expanding your portfolio?**

**Call 01564 777 314 to provide your investment criteria for alerts.**



**SCAN TO VIEW OUR WEEKLY FILMS & SUBSCRIBE**

**Sneak Peeks**

Every week, we unveil "Sneak Peeks," a feature showcasing exclusive properties before they hit Rightmove and other platforms.

**The Landlord Club**

Join our Landlord Club for weekly updates on legislation, market trends, and our Letting Director's 'Investment Pick of the Week' for optimal ROI.

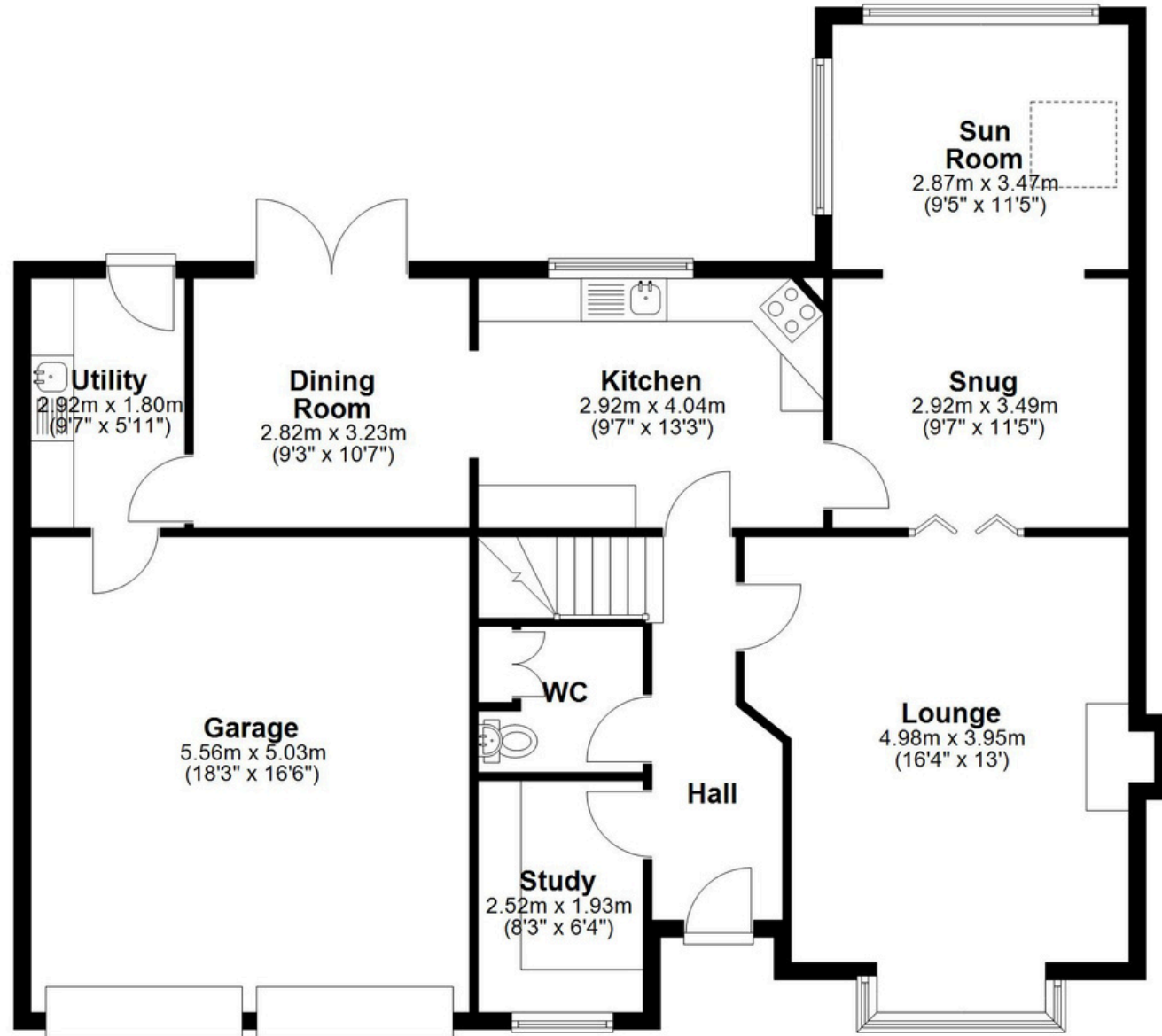
**HTSPMD**

Tune into 'How's The Solihull Property Market Dom' weekly for a quick, insightful snapshot of the market.

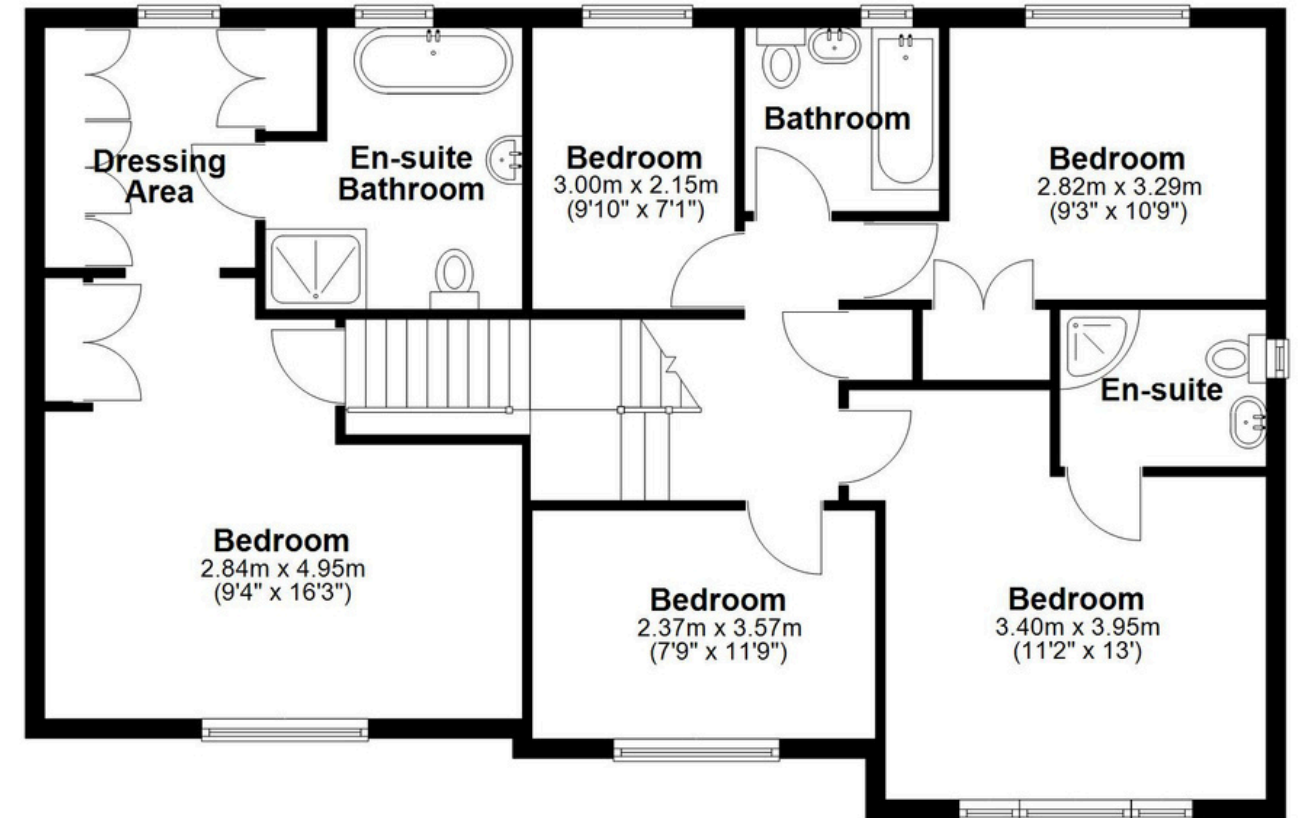
**The Mortgage Update**

Get weekly insights and the best deals with our Mortgage Update, your shortcut to navigating the complex mortgage landscape confidently.

**Ground Floor**  
Approx. 117.2 sq. metres (1261.4 sq. feet)



**First Floor**  
Approx. 95.1 sq. metres (1023.5 sq. feet)



**Total area: approx. 212.3 sq. metres (2284.9 sq. feet)**

This floor plan is for illustration purposes only, this is not intended to be a measured/scaled survey or comply with RICS guidelines. All measurements (including total floor area) openings, orientation and floor area are approximate. No details are guaranteed, they cannot be relied upon for any purpose and do not form part of any agreement. A party must rely upon its own inspection(s). No responsibility is taken for any error, omission, or misstatement.

Plan produced using PlanUp.