

Need a Mortgage in principle to make offers? Call us now for quick assistance!  
0121 775 0101



Do you need to sell? Start your journey now! Call us we can help.  
01564 777 314



**SCAN FOR MORE INFO**  
**SIZE** - 780 Sq Ft  
**TENURE** - Leasehold with 115 Years Remaining  
**SERVICE CHARGE** - £1,090.60 pa  
**GROUND RENT** - £510.00 pa  
**COUNCIL TAX** - Solihull Metropolitan Borough Council - E  
**BROADBAND** - Upload Max 100Mbps Download Max 1800Mbps  
**MOBILE** - EE - 83%, Vodafone - 79%, 3 - 78%, 02 - 76%  
**EPC** - TBC  
**PARKING** - Communal Gated Parking  
**FLOODRISK** - Very Low  
**SERVICES** - Mains  
**COVENANTS** - N/A

## Apartment 4 Ravenshaw Court

73 Four Ashes Road, Bentley Heath, B93 8NA  
Offers in the Region of £200,000

This ground floor apartment is designed exclusively for those aged over 70 and over and is offered with no upward chain. The property affords underfloor heating throughout for added comfort and is a lifestyle choice for those seeing comfort, security and a vibrant community for all residents.

### FEATURES

- Offered with No Upward Chain
- Exclusively for the Over 70's
- Lounge/Dining Room
- Modern Fitted Kitchen
- Principal Bedroom with Wardrobes
- Second Double Bedroom
- Four Piece Wet Room
- Guest Cloakroom
- Beautiful Communal Grounds
- Secure Gated Un-Allocated Parking

Are you an investor interested in expanding your portfolio?

Call 01564 777 314 to provide your investment criteria for alerts.



SCAN TO VIEW OUR WEEKLY FILMS & SUBSCRIBE

### Sneak Peeks

Every week, we unveil "Sneak Peeks," a feature showcasing exclusive properties before they hit Rightmove and other platforms.

### The Landlord Club

Join our Landlord Club for weekly updates on legislation, market trends, and our Letting Director's 'Investment Pick of the Week' for optimal ROI.

### HTSPMD

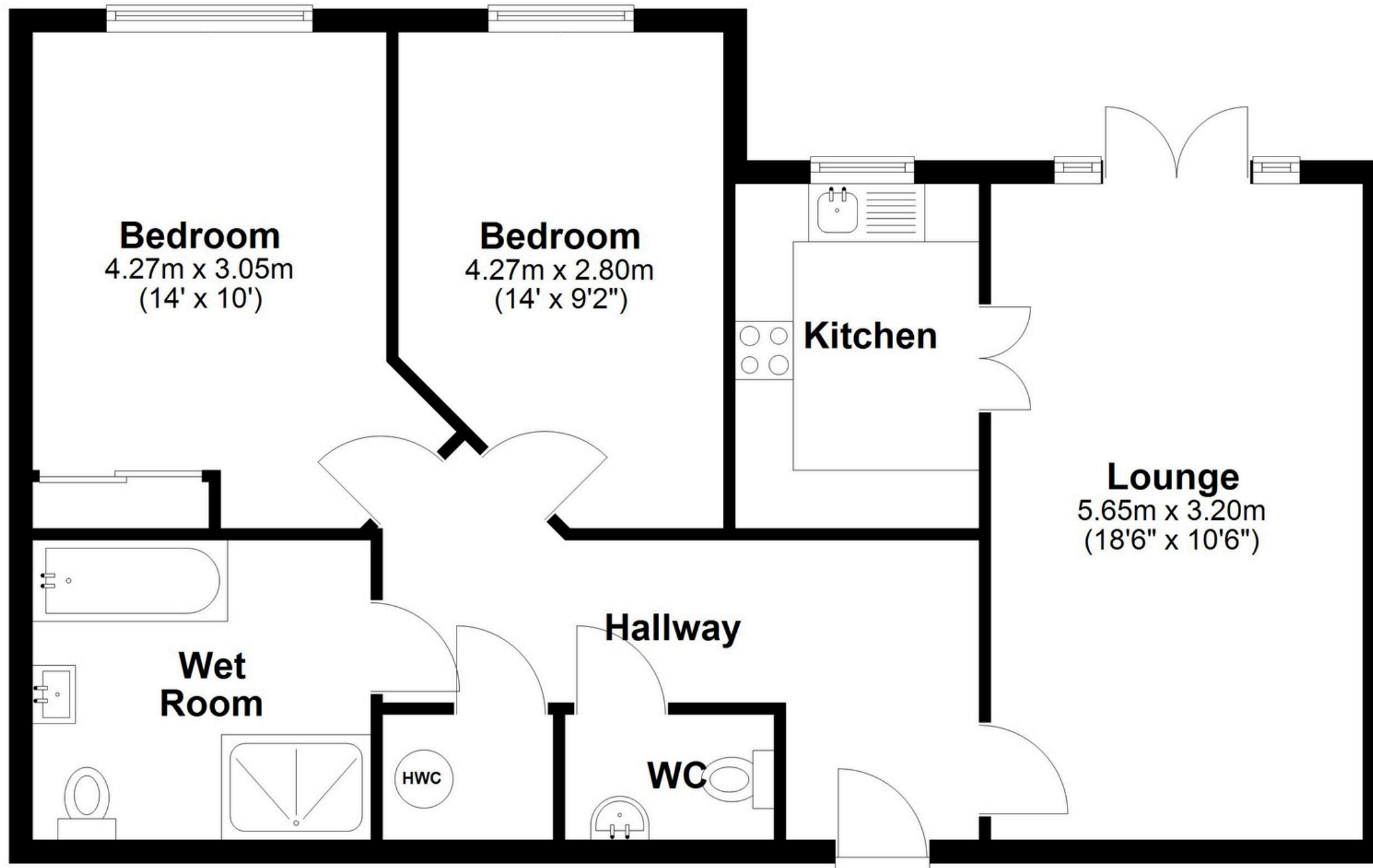
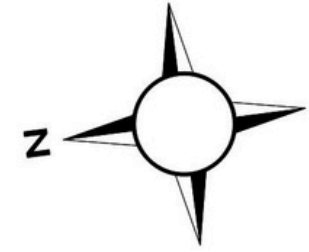
Tune into 'How's The Solihull Property Market Dom' weekly for a quick, insightful snapshot of the market.

### The Mortgage Update

Get weekly insights and the best deals with our Mortgage Update, your shortcut to navigating the complex mortgage landscape confidently.

# Floor Plan

Approx. 72.5 sq. metres (780.6 sq. feet)



Total area: approx. 72.5 sq. metres (780.6 sq. feet)

This floor plan is for illustration purposes only, this is not intended to be a measured/scaled survey or comply with RICS guidelines. All measurements (including total floor area) openings, orientation and floor area are approximate. No details are guaranteed, they cannot be relied upon for any purpose and do not form part of any agreement. A party must rely upon its own inspection(s). No responsibility is taken for any error, omission, or mis-statement.

Plan produced using PlanUp.