

Need a Mortgage in principle to make offers? Call us now for quick assistance!
0121 775 0101



Do you need to sell? Start your journey now! Call us we can help.
0121 775 0101



SCAN FOR MORE INFO
SIZE - 2293 Sq Ft
TENURE - Freehold
COUNCIL TAX - Solihull Metropolitan Borough Council - G
BROADBAND - Upload Max 1000Mbps Download Max 1800Mbps
MOBILE SERVICES - 3 - 84%, EE - 82%, O2 - 80%, Vodafone - 78%
EPC - C - 77
PARKING - For at least 8 Cars
FLOODRISK - Very Low
SERVICES - Mains
COVENANTS - N/A

228 Blossomfield Road

Solihull, B91 INT
Offers Over £850,000

Situated on the desirable Blossomfield Road in Solihull, this impressive detached house offers a wonderful opportunity for families seeking a spacious and adaptable home. This property, while requiring some updating and modernisation, presents a fantastic opportunity for buyers to personalise their dream home in a sought-after location. Offered with no upward chain.

FEATURES

- Substantial Detached Family Home Offered with No Upward Chain
- Spacious Dual Aspect Lounge
- Separate Dining Room
- Modern Breakfast Kitchen
- Dual Aspect Principal Bedroom with Dressing Area & En-Suite Bathroom
- Second Double Bedroom with Fitted Wardrobes
- Two Further Good Sized Double Bedrooms with Fitted Wardrobes
- Family Bathroom
- Private Rear Garden
- Double Garage, Ample Driveway Parking & Electric Car Charging Point
- Solar Panels

Are you an investor interested in expanding your portfolio?

Call 0121 775 0101 to provide your investment criteria for alerts.



Sneak Peeks

Every week, we unveil "Sneak Peeks," a feature showcasing exclusive properties before they hit Rightmove and other platforms.

The Landlord Club

Join our Landlord Club for weekly updates on legislation, market trends, and our Letting Director's 'Investment Pick of the Week' for optimal ROI.

HTSPMD

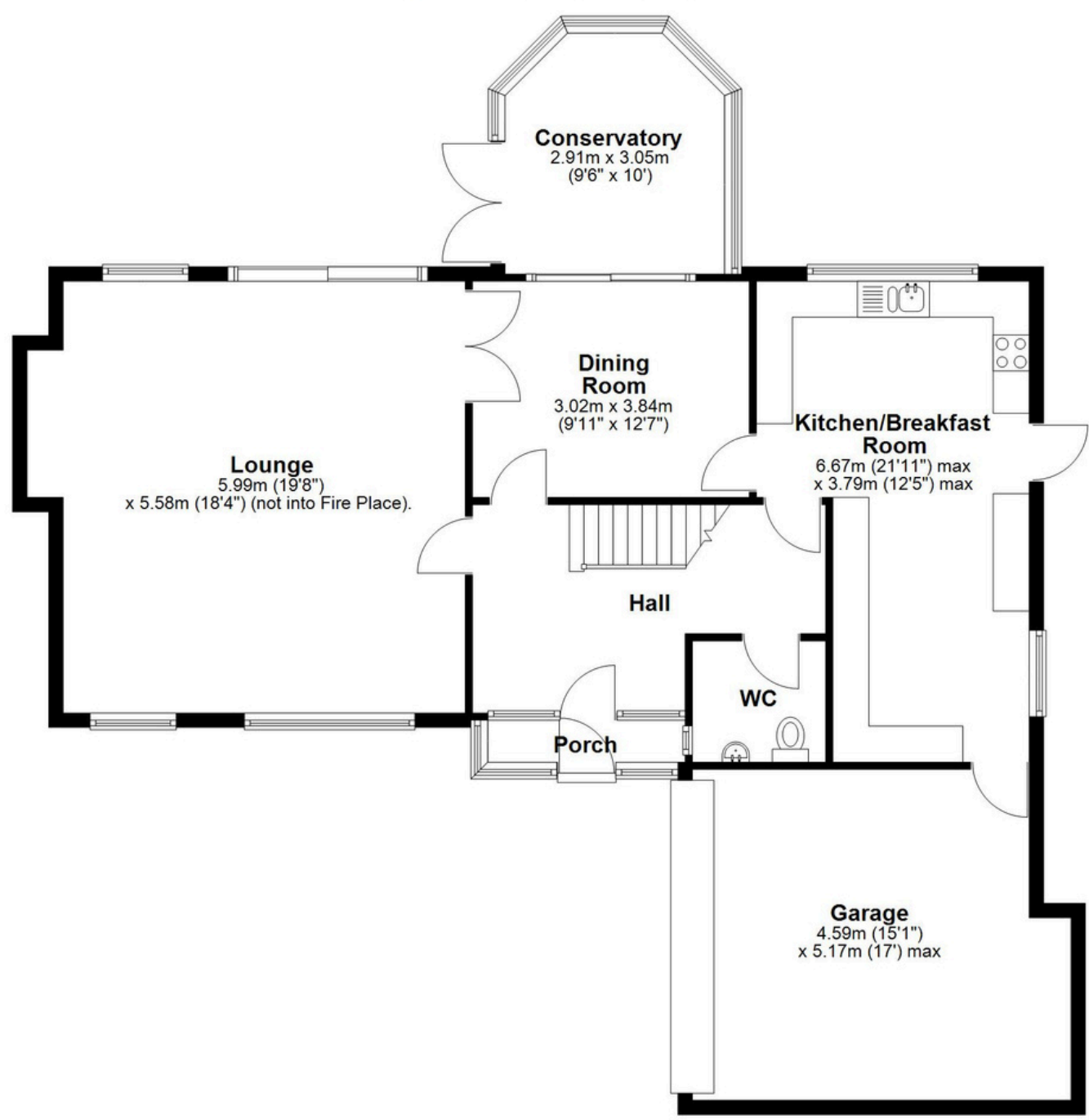
Tune into 'How's The Solihull Property Market Dom' weekly for a quick, insightful snapshot of the market.

The Mortgage Update

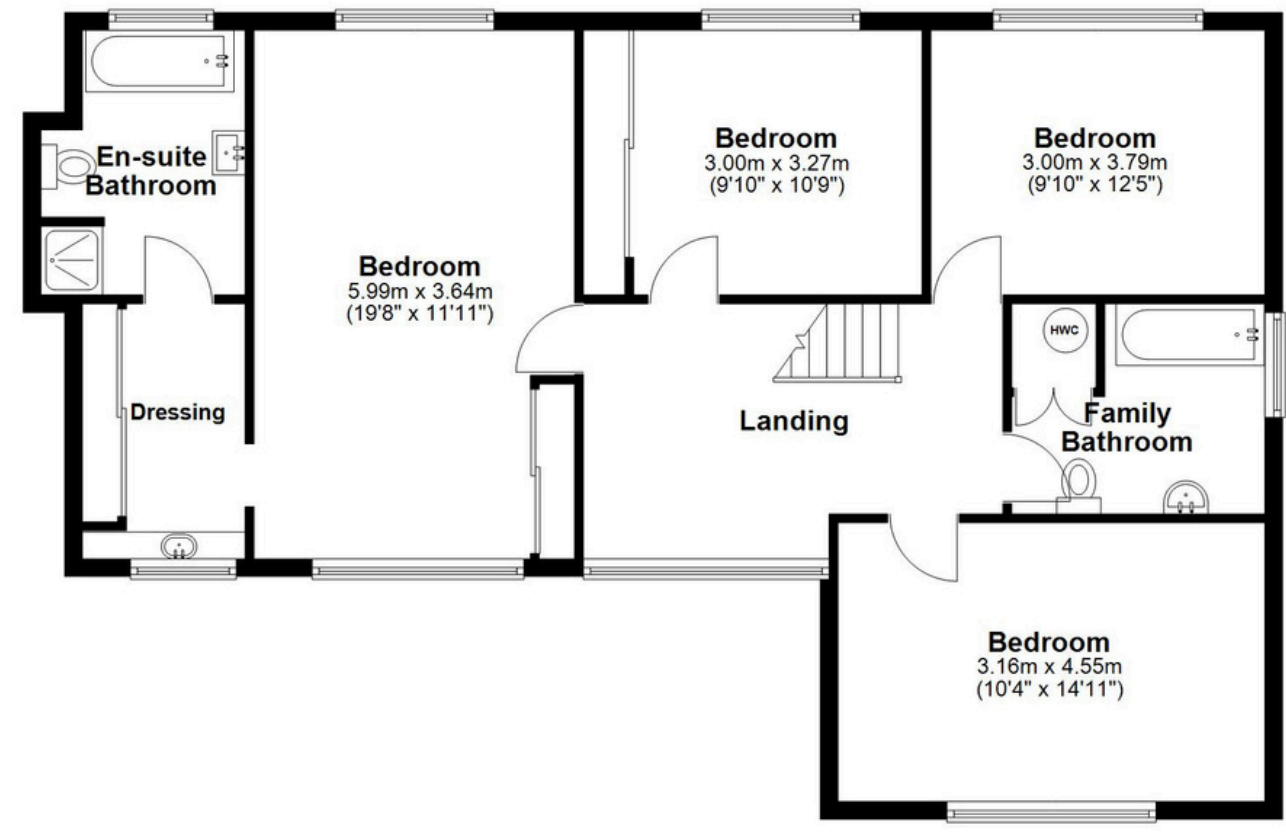
Get weekly insights and the best deals with our Mortgage Update, your shortcut to navigating the complex mortgage landscape confidently.

SCAN TO VIEW OUR WEEKLY FILMS & SUBSCRIBE

Ground Floor
Approx. 119.9 sq. metres (1290.3 sq. feet)



First Floor
Approx. 93.2 sq. metres (1003.4 sq. feet)



Total area: approx. 213.1 sq. metres (2293.8 sq. feet)

This floor plan is for illustration purposes only, this is not intended to be a measured/scaled survey or comply with RICS guidelines. All measurements (including total floor area) openings, orientation and floor area are approximate. No details are guaranteed, they cannot be relied upon for any purpose and do not form part of any agreement. A party must rely upon its own inspection(s). No responsibility is taken for any error, omission, or mis-statement.
Plan produced using PlanUp.