

**Need a Mortgage in principle to make offers?** Call us now for quick assistance!  
**0121 775 0101**



**Do you need to sell? Start your journey now!** Call us we can help.  
**0121 775 0101**



**SCAN FOR MORE INFO**  
**SIZE** - 698Sq Ft  
**TENURE** - Freehold  
**COUNCIL TAX** - Solihull Metropolitan Borough Council - C  
**BROADBAND** - Upload Max 220Mbps Download Max 1800Mbps  
**MOBILE SERVICES** - 3 - 86%, EE - 83%, Vodafone - 76%, 02 - 75%  
**EPC** - B - 84  
**PARKING** - For at least 2 Cars  
**FLOODRISK** - Very Low  
**SERVICES** - Mains  
**COVENANTS** - N/A

## 3 Memorial Close

**Cheswick Green, B90 4LJ**  
**Offers Over £300,000**

Offered with no upward chain, this beautifully presented modern mid-terraced house, situated in Cheswick Green offers a delightful living experience. Built by Bloor Homes just seven years ago, this property is an excellent opportunity for first-time buyers or investors alike. This property is not only modern and stylish but also offers practicality and comfort in a desirable location. It is a must-see for anyone looking to make a home in this lovely part of Solihull.

### FEATURES

- Modern Mid Terraced Property Offered with no Upward Chain
- Bright Lounge with Under Stairs Cupboard
- Breakfast Kitchen with French Doors to Garden
- Principal Bedroom with En-Suite Shower Room
- Second Double Bedroom
- Family Bathroom
- Rear Garden
- Driveway Parking
- Built by Bloor Homes 7 Years Ago
- Fabulous First Time Buyer or Investor Opportunity

**Are you an investor interested in expanding your portfolio?**

**Call 0121 775 0101 to provide your investment criteria for alerts.**



**SCAN TO VIEW OUR WEEKLY FILMS & SUBSCRIBE**

### Sneak Peeks

Every week, we unveil "Sneak Peeks," a feature showcasing exclusive properties before they hit Rightmove and other platforms.

### The Landlord Club

Join our Landlord Club for weekly updates on legislation, market trends, and our Letting Director's 'Investment Pick of the Week' for optimal ROI.

### HTSPMD

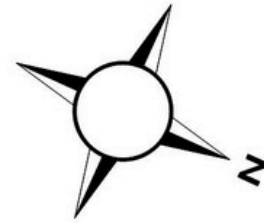
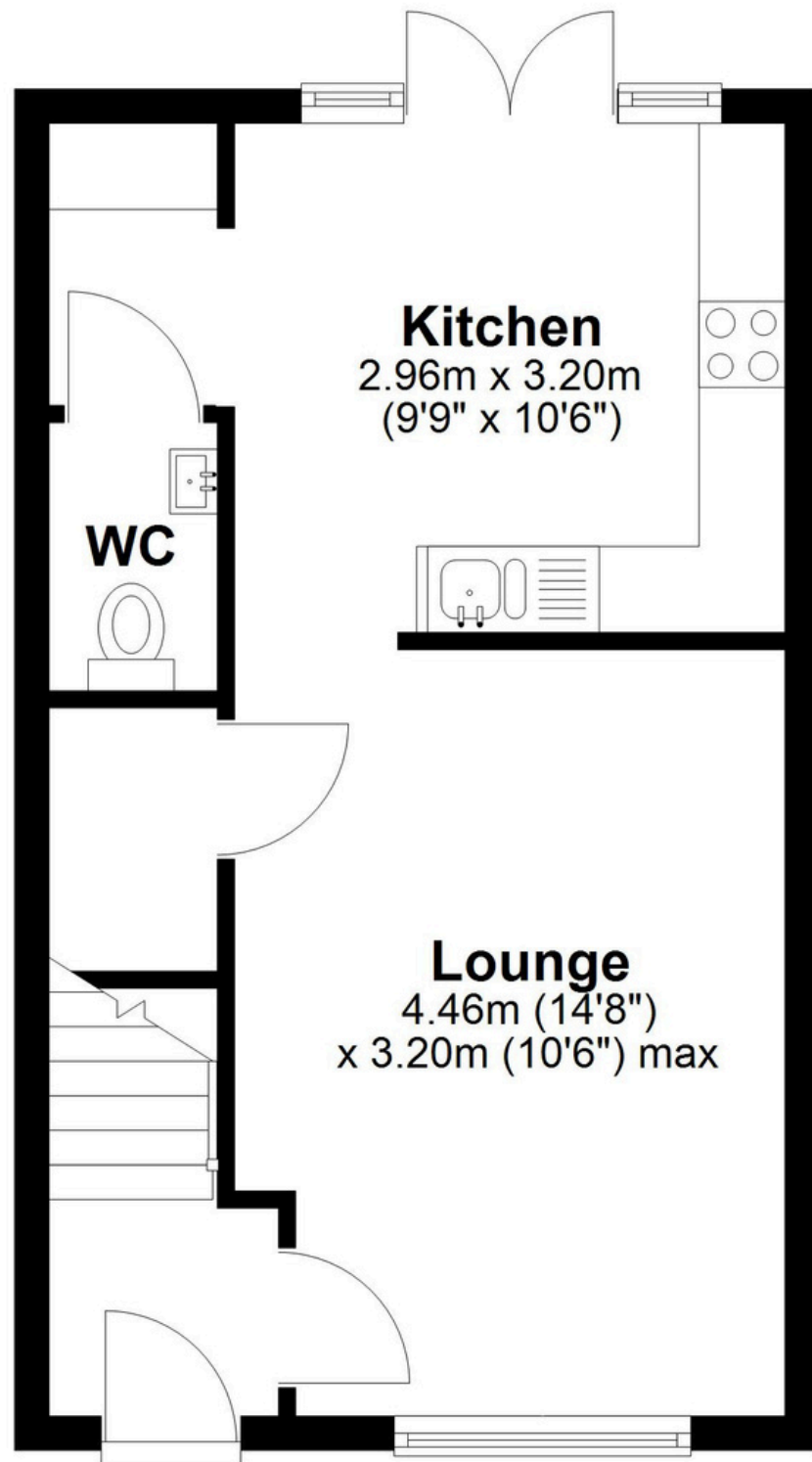
Tune into 'How's The Solihull Property Market Dom' weekly for a quick, insightful snapshot of the market.

### The Mortgage Update

Get weekly insights and the best deals with our Mortgage Update, your shortcut to navigating the complex mortgage landscape confidently.

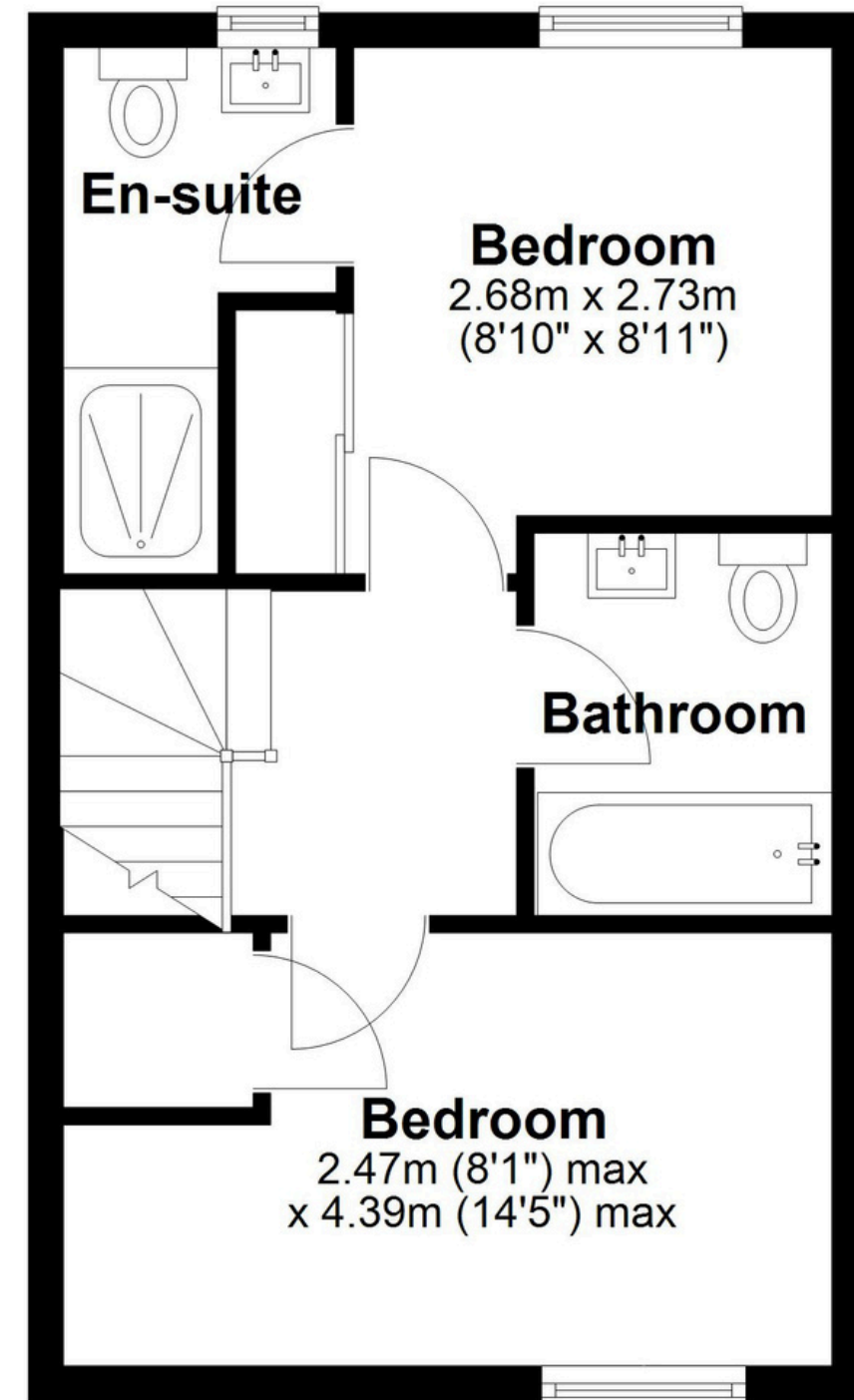
## Ground Floor

Approx. 32.2 sq. metres (346.7 sq. feet)



## First Floor

Approx. 32.7 sq. metres (351.9 sq. feet)



**Total area: approx. 64.9 sq. metres (698.6 sq. feet)**

This floor plan is for illustration purposes only, this is not intended to be a measured/scaled survey or comply with RICS guidelines. All measurements (including total floor area) openings, orientation and floor area are approximate. No details are guaranteed, they cannot be relied upon for any purpose and do not form part of any agreement. A party must rely upon its own inspection(s). No responsibility is taken for any error, omission, or mis-statement.

Plan produced using PlanUp.