

Need a Mortgage in principle to make offers? Call us now for quick assistance!
0121 775 0101



Do you need to sell? Start your journey now! Call us we can help.
0121 775 0101



3 Cloudbridge Drive

Solihull, B92 0PY
Offers in the region of £575,000

SCAN FOR MORE INFO
SIZE - 1757 Sq Ft
TENURE - Freehold
COUNCIL TAX - Solihull Metropolitan Borough Council - F
BROADBAND - Upload Max 1800Mbps Download Max 1000Mbps
MOBILE SERVICES - EE - 87%, 3 - 82%, Vodafone - 82%, 02 - 80%
EPC - C - 71
PARKING - For at least 4 Cars
FLOODRISK - Very Low
SERVICES - Mains
COVENANTS - N/A

Located in the sought-after Damson Parkway development, this substantial detached family home offers a perfect blend of comfort and style. Set within a quiet cul-de-sac, the property boasts an impressive 1,757 square feet of living space, making it an ideal choice for families seeking room to grow. * FREEHOLD UPON COMPLETION *

FEATURES

- Fabulous Family Home with Spacious Accommodation
- Bright Lounge with Bay Window
- Dining Room Leading to a Conservatory
- Fitted Dining Kitchen with Separate Utility
- Versatile Third Reception Room
- Principal Bedroom with Dressing Area & En-Suite
- Two Further Double Bedrooms,
- Fourth Bedroom/Dressing Area
- Family Bathroom
- Private South West Facing Rear Garden
- Ample Driveway Parking & Double Garage
- Freehold Upon Completion

Are you an investor interested in expanding your portfolio?

Call 0121 775 0101 to provide your investment criteria for alerts.



Sneak Peeks

Every week, we unveil "Sneak Peeks," a feature showcasing exclusive properties before they hit Rightmove and other platforms.

The Landlord Club

Join our Landlord Club for weekly updates on legislation, market trends, and our Letting Director's 'Investment Pick of the Week' for optimal ROI.

HTSPMD

Tune into 'How's The Solihull Property Market Dom' weekly for a quick, insightful snapshot of the market.

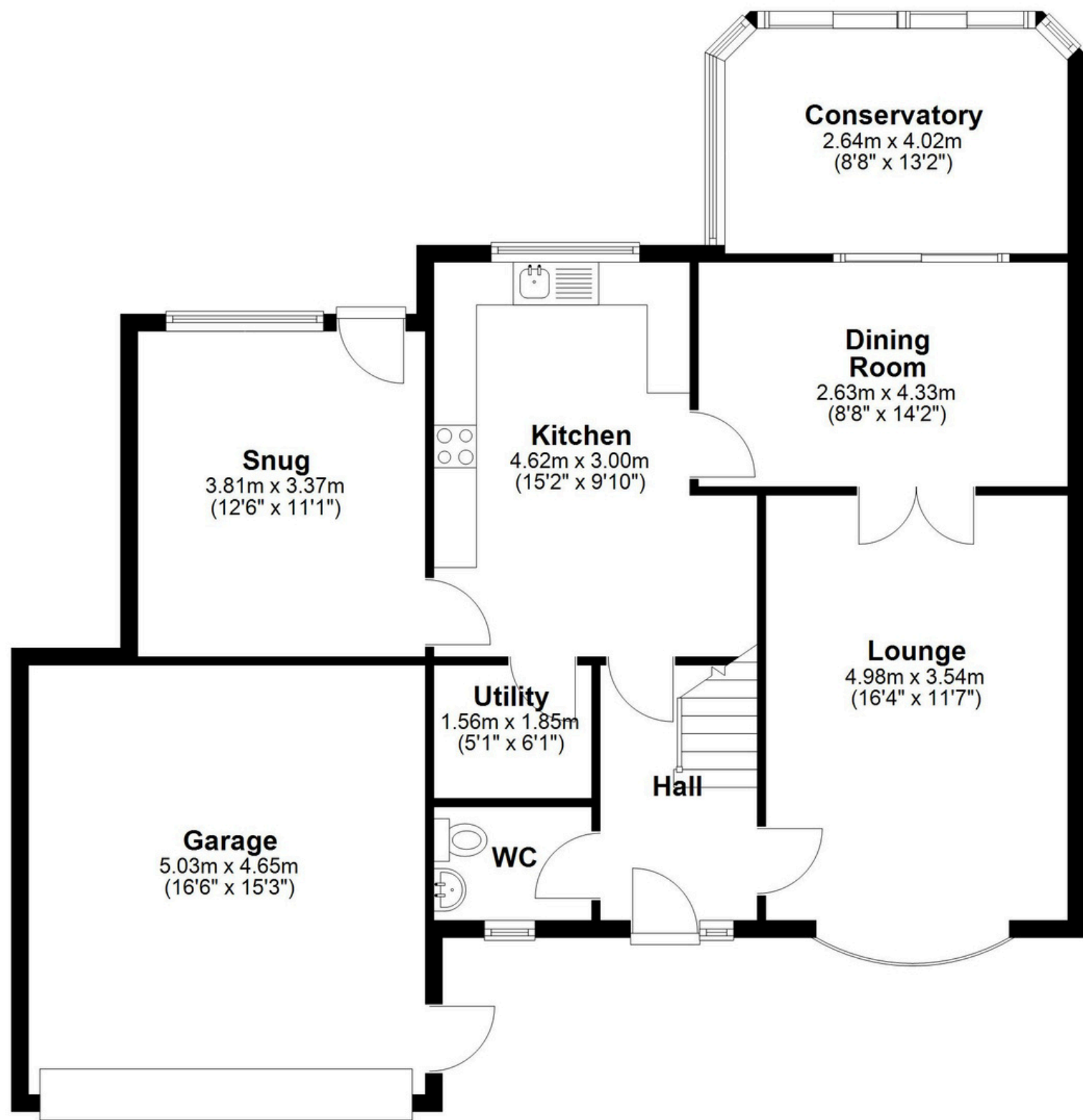
The Mortgage Update

Get weekly insights and the best deals with our Mortgage Update, your shortcut to navigating the complex mortgage landscape confidently.

SCAN TO VIEW OUR WEEKLY FILMS & SUBSCRIBE

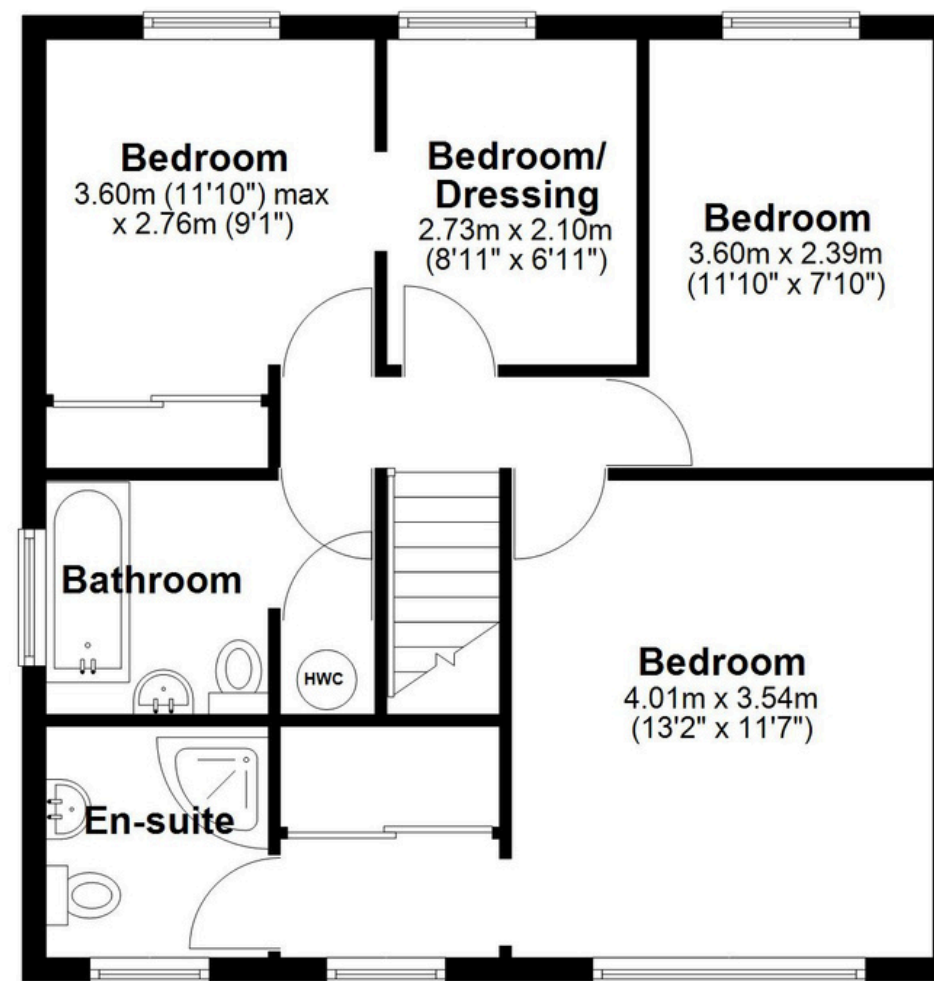
Ground Floor

Approx. 105.6 sq. metres (1137.1 sq. feet)



First Floor

Approx. 57.6 sq. metres (620.5 sq. feet)



Total area: approx. 163.3 sq. metres (1757.6 sq. feet)

This floor plan is for illustration purposes only, this is not intended to be a measured/scaled survey or comply with RICS guidelines. All measurements (including total floor area) openings, orientation and floor area are approximate. No details are guaranteed, they cannot be relied upon for any purpose and do not form part of any agreement. A party must rely upon its own inspection(s). No responsibility is taken for any error, omission, or mis-statement.

Plan produced using PlanUp.