

**Need a Mortgage in principle to make offers?** Call us now for quick assistance!  
**0121 775 0101**



**Do you need to sell? Start your journey now!** Call us we can help.  
**01564 777 314**



**SCAN FOR MORE INFO**  
**SIZE** - 1161 Sq Ft  
**TENURE** - Freehold  
**COUNCIL TAX** - Solihull Metropolitan Borough Council - D  
**BROADBAND** - Upload Max 220Mbps Download Max 1800Mbps  
**MOBILE** - EE - 83%, Vodafone - 79%, 3 - 78%, O2 - 76%  
**EPC** - B - 81  
**PARKING** - To Rear of Property  
**FLOODRISK** - Very Low  
**SERVICES** - Mains  
**COVENANTS** - N/A

## 6 Bower Square

**Knowle, B93 0FE**  
**Offers Over £450,000**

Situated on a quiet road in Knowle, this exquisite end-terrace townhouse offers a perfect blend of modern living and convenience. Built in 2015, this beautifully presented three-storey home makes it an ideal choice for families or professionals seeking a comfortable and stylish residence. With its prime location within walking distance to Knowle High Street, this townhouse is not only a beautiful residence but also a convenient one, making it a must-see for those seeking a vibrant community lifestyle.

### FEATURES

- Three Storey End Townhouse
- Well Presented Throughout
- Open Plan Modern Kitchen/Diner with Appliances
- First Floor Living Room
- Principal Bedroom with Fitted Wardrobes & En-Suite Shower Room
- Two Further Bedrooms
- Family Bathroom
- Private Rear Garden
- Parking to Rear
- Walking Distance to Knowle Village Centre
- Arden Academy Catchment

**Are you an investor interested in expanding your portfolio?**

**Call 01564 777 314 to provide your investment criteria for alerts.**



**SCAN TO VIEW OUR WEEKLY FILMS & SUBSCRIBE**

### Sneak Peeks

Every week, we unveil "Sneak Peeks," a feature showcasing exclusive properties before they hit Rightmove and other platforms.

### The Landlord Club

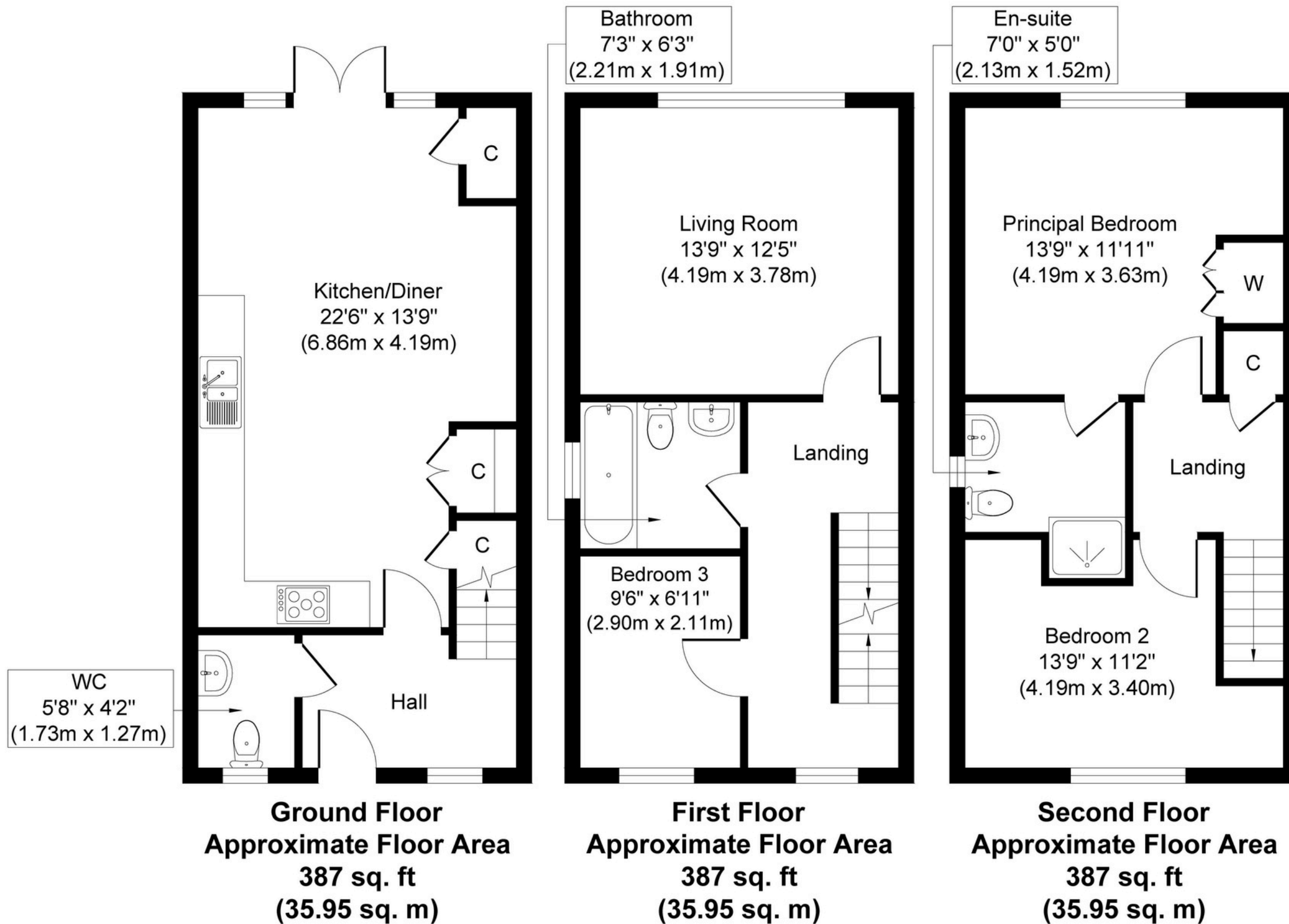
Join our Landlord Club for weekly updates on legislation, market trends, and our Letting Director's 'Investment Pick of the Week' for optimal ROI.

### HTSPMD

Tune into 'How's The Solihull Property Market Dom' weekly for a quick, insightful snapshot of the market.

### The Mortgage Update

Get weekly insights and the best deals with our Mortgage Update, your shortcut to navigating the complex mortgage landscape confidently.



Whilst every attempt has been made to ensure the accuracy of the floor plan contained here, measurements of doors, windows, rooms and any other items are approximate and no responsibility is taken for any error, omission, or mis-statement. The measurements should not be relied upon for valuation, transaction and/or funding purposes. This plan is for illustrative purposes only and should be used as such by any prospective purchaser or tenant.

The services, systems and appliances shown have not been tested and no guarantee as to their operability or efficiency can be given.