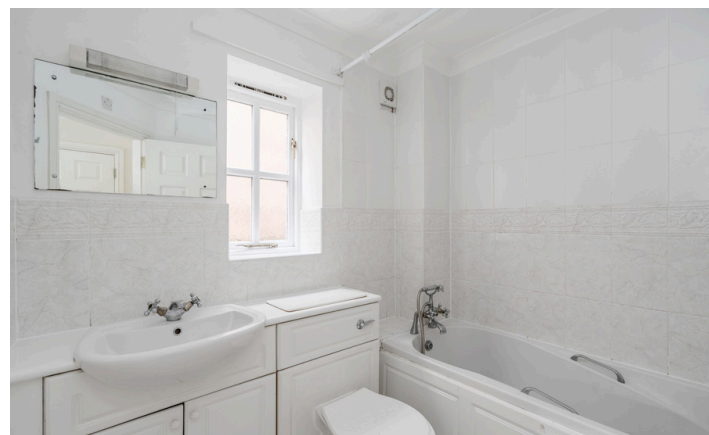


Need a Mortgage in principle to make offers? Call us now for quick assistance!  
0121 775 0101



Do you need to sell? Start your journey now! Call us we can help.  
0121 775 0101



## Flat 3 Blossomfield Gardens

34 Blossomfield Road, Solihull, B91 1NZ  
Offers in the region of £275,000

This beautifully presented ground floor apartment is a delightful find, offered with no upward chain. The property is set within well-maintained communal grounds, providing a serene environment for residents. This property is a wonderful opportunity for anyone looking to enjoy a comfortable and stylish lifestyle in a sought-after area.

### FEATURES

- Well Presented Ground Floor Apartment
- No Upward Chain
- Lounge/Dining Room with Access to Garden
- Fitted Kitchen
- Principal Bedroom with En-Suite Bathroom
- Second Good Sized Bedroom
- Shower Room
- Parking Space & Single Garage
- Beautiful Communal Grounds
- Gated Development
- Walking Distance to Solihull Town Centre & Train Station



### SCAN FOR MORE INFO

**SIZE** - 787 Sq Ft  
**TENURE** - Leasehold with 124 years remaining  
**SERVICE CHARGE** - £2,750 per annum  
**GROUND RENT** - £400 per annum  
**COUNCIL TAX** - Solihull Metropolitan Borough Council - D  
**BROADBAND** - Upload Max 220Mbps Download Max 1000Mbps  
**MOBILE SERVICES** - 3 - 84%, EE - 82%, O2 - 80%, Vodafone - 78%  
**EPC** - C - 70  
**PARKING** - 1 Space & Single Garage  
**FLOODRISK** - Very Low  
**SERVICES** - Mains  
**COVENANTS** - N/A

Are you an investor interested in expanding your portfolio?

Call 0121 775 0101 to provide your investment criteria for alerts.



SCAN TO VIEW OUR WEEKLY FILMS & SUBSCRIBE

### Sneak Peeks

Every week, we unveil "Sneak Peeks," a feature showcasing exclusive properties before they hit Rightmove and other platforms.

### The Landlord Club

Join our Landlord Club for weekly updates on legislation, market trends, and our Letting Director's 'Investment Pick of the Week' for optimal ROI.

### HTSPMD

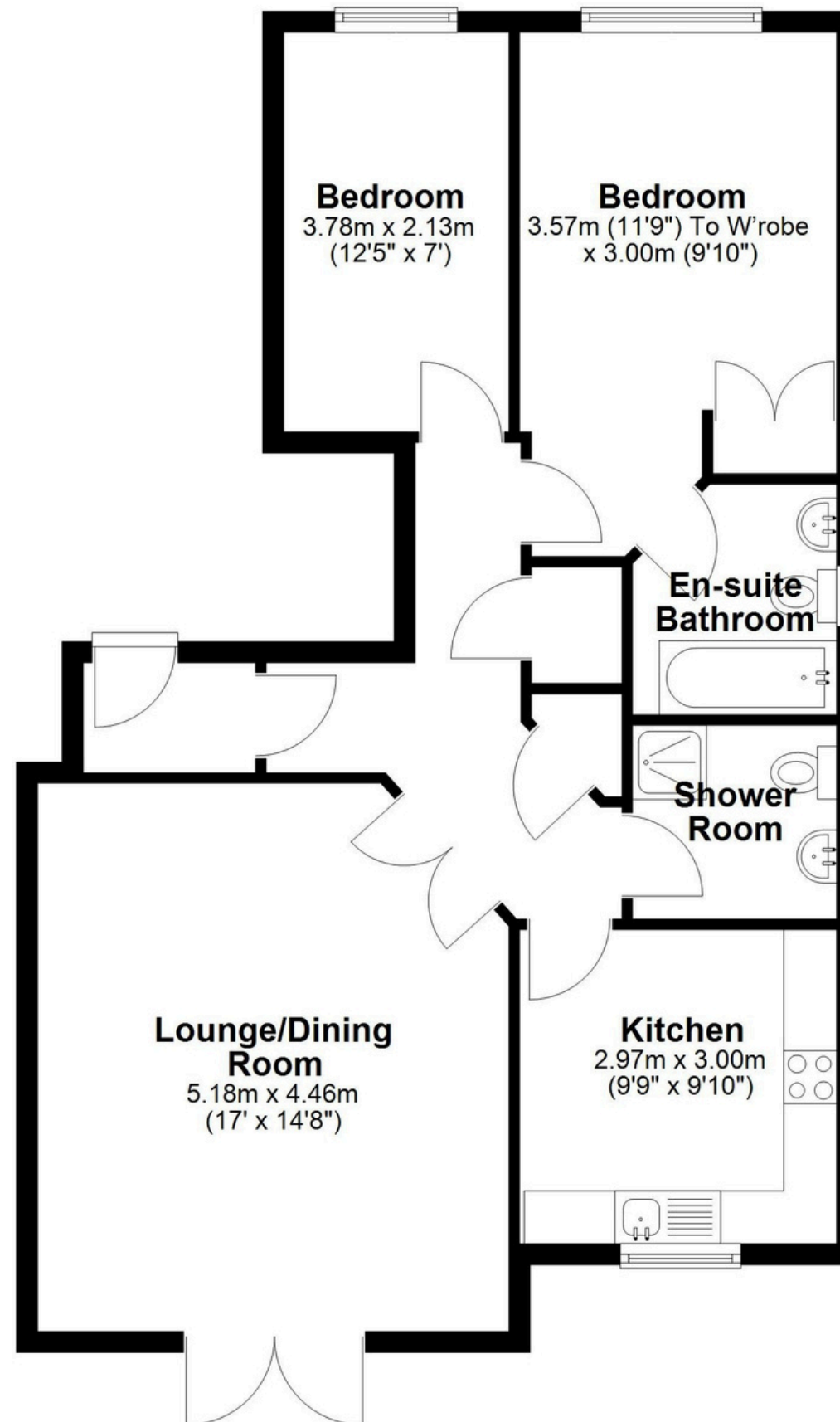
Tune into 'How's The Solihull Property Market Dom' weekly for a quick, insightful snapshot of the market.

### The Mortgage Update

Get weekly insights and the best deals with our Mortgage Update, your shortcut to navigating the complex mortgage landscape confidently.

## Floor Plan

Approx. 73.2 sq. metres (787.8 sq. feet)



Total area: approx. 73.2 sq. metres (787.8 sq. feet)

This floor plan is for illustration purposes only, this is not intended to be a measured/scaled survey or comply with RICS guidelines. All measurements (including total floor area) openings, orientation and floor area are approximate. No details are guaranteed, they cannot be relied upon for any purpose and do not form part of any agreement. A party must rely upon its own inspection(s). No responsibility is taken for any error, omission, or mis-statement.

Plan produced using PlanUp.