

Need a Mortgage in principle to make offers? Call us now for quick assistance!
0121 775 0101



Do you need to sell? Start your journey now! Call us we can help.
0121 775 0101



SCAN FOR MORE INFO
SIZE - 1029 Sq Ft
TENURE - Freehold
COUNCIL TAX - Birmingham City Council - C
BROADBAND - Upload Max 1000Mbps Download Max 1800Mbps
MOBILE SERVICES - 02 - 86%, 3 - 85%, EE - 84%, Vodafone - 82%
EPC - C - 78
PARKING - Garage & Parking
FLOODRISK - Very Low
SERVICES - Mains
COVENANTS - N/A

14 Waterway Court

Yardley Wood, B14 4HW
Offers in the Region of £290,000

A mid-terrace house offering a perfect blend of comfort and convenience. Neutrally decorated throughout, it is an ideal canvas for your personal touch. This property is offered with no upward chain, making it an excellent opportunity for those looking to move swiftly into their new home. With its blend of space, style and practicality, it is a must-see for anyone seeking a comfortable family residence in Birmingham.

FEATURES

- Three Storey Mid Townhouse Property
- Offered with No Upward Chain
- Fitted Kitchen with Appliances
- Spacious Lounge/Dining Room
- Two First Floor Double Bedrooms
- Family Bathroom
- Second Floor Principal Bedroom with Walk-In Dressing Area
- Shower Room
- Private Rear Garden
- Single Garage & Driveway Parking

Are you an investor interested in expanding your portfolio?

Call 0121 775 0101 to provide your investment criteria for alerts.



Sneak Peeks

Every week, we unveil "Sneak Peeks," a feature showcasing exclusive properties before they hit Rightmove and other platforms.

The Landlord Club

Join our Landlord Club for weekly updates on legislation, market trends, and our Letting Director's 'Investment Pick of the Week' for optimal ROI.

HTSPMD

Tune into 'How's The Solihull Property Market Dom' weekly for a quick, insightful snapshot of the market.

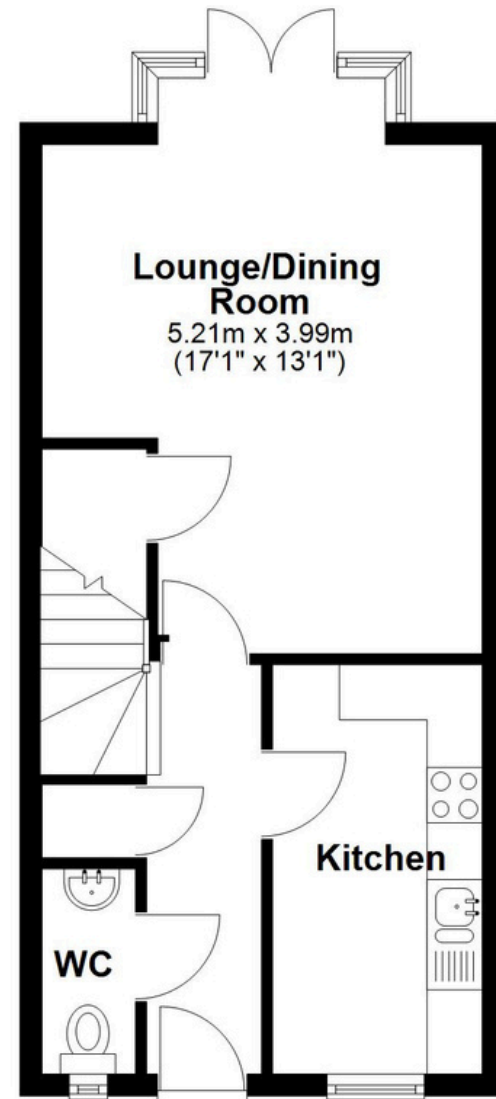
The Mortgage Update

Get weekly insights and the best deals with our Mortgage Update, your shortcut to navigating the complex mortgage landscape confidently.

SCAN TO VIEW OUR WEEKLY FILMS & SUBSCRIBE

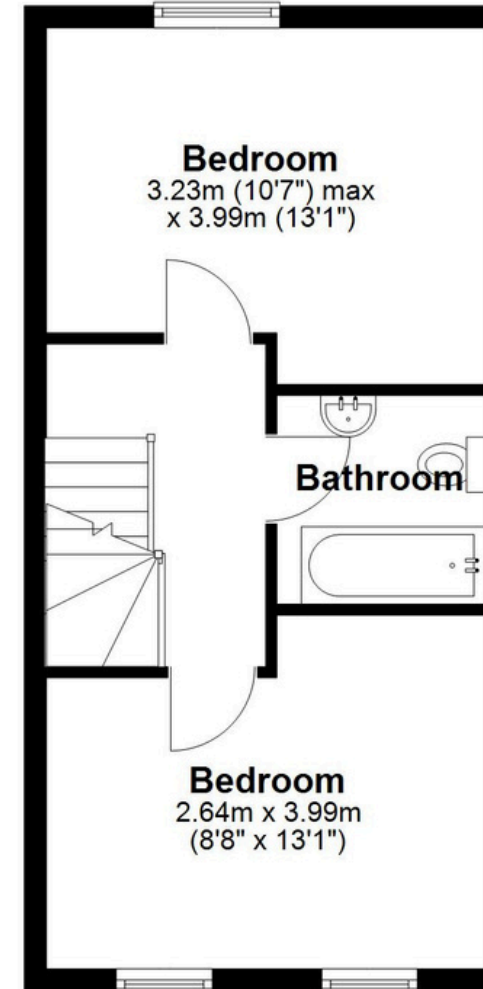
Ground Floor

Main area: approx. 34.8 sq. metres (374.9 sq. feet)
Plus garage, approx. 13.6 sq. metres (146.1 sq. feet)



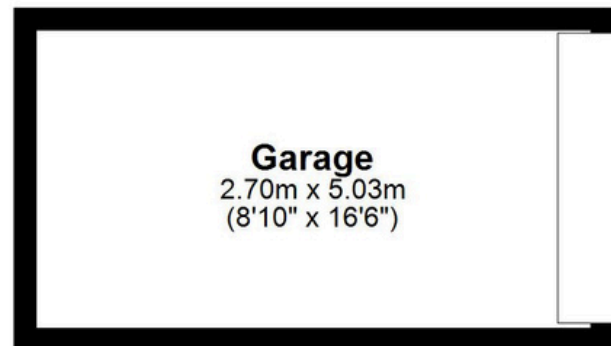
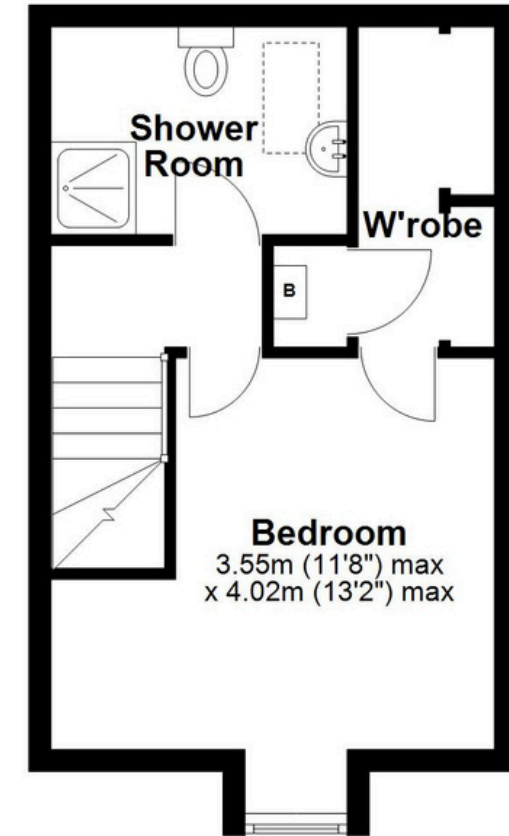
First Floor

Approx. 34.0 sq. metres (366.0 sq. feet)



Second Floor

Approx. 26.8 sq. metres (288.7 sq. feet)



Main area: Approx. 95.7 sq. metres (1029.6 sq. feet)

Plus garage, approx. 13.6 sq. metres (146.1 sq. feet)

This floor plan is for illustration purposes only, this is not intended to be a measured/scaled survey or comply with RICS guidelines. All measurements (including total floor area) openings, orientation and floor area are approximate. No details are guaranteed, they cannot be relied upon for any purpose and do not form part of any agreement. A party must rely upon its own inspection(s). No responsibility is taken for any error, omission, or mis-statement.

Plan produced using PlanUp.