

Need a Mortgage in principle to make offers? Call us now for quick assistance!
0121 775 0101



Do you need to sell? Start your journey now! Call us we can help.
01564 777 314



SCAN FOR MORE INFO
SIZE - 1227Sq Ft
TENURE - Freehold
COUNCIL TAX - Warwick District Council - D
BROADBAND - Upload Max 220Mbps
 Download Max 1800Mbps
MOBILE - EE - 74%, O2 - 78%, 3 - 72%, Vodafone - 76%
EPC - E - 65
PARKING -
FLOODRISK - Very Low
SERVICES - Mains
COVENANTS - N/A

10 Kingswood Close

Lapworth, B94 6JQ
Offers Over £550,000

Situated in the charming village of Lapworth, this beautifully presented and extended semi-detached family home on Kingswood Close offers a perfect blend of traditional elegance and modern living. The property is located in a peaceful cul-de-sac and boasts an inviting atmosphere and further potential for extension, subject to planning permission.

FEATURES

- Beautifully Presented & Extended Semi-Detached Property
- Cul-de-Sac Location
- Lounge with Feature Log Burner
- Stunning Open Plan Kitchen/Dining/Family Room
- Second Versatile Reception Room
- Two Double Bedrooms
- Third Single/Nursery
- Luxury Family Bathroom
- Private Rear Garden
- Ample Driveway Parking

Are you an investor interested in expanding your portfolio?

Call 01564 777 314 to provide your investment criteria for alerts.



SCAN TO VIEW OUR WEEKLY FILMS & SUBSCRIBE

Sneak Peeks

Every week, we unveil "Sneak Peeks," a feature showcasing exclusive properties before they hit Rightmove and other platforms.

The Landlord Club

Join our Landlord Club for weekly updates on legislation, market trends, and our Letting Director's 'Investment Pick of the Week' for optimal ROI.

HTSPMD

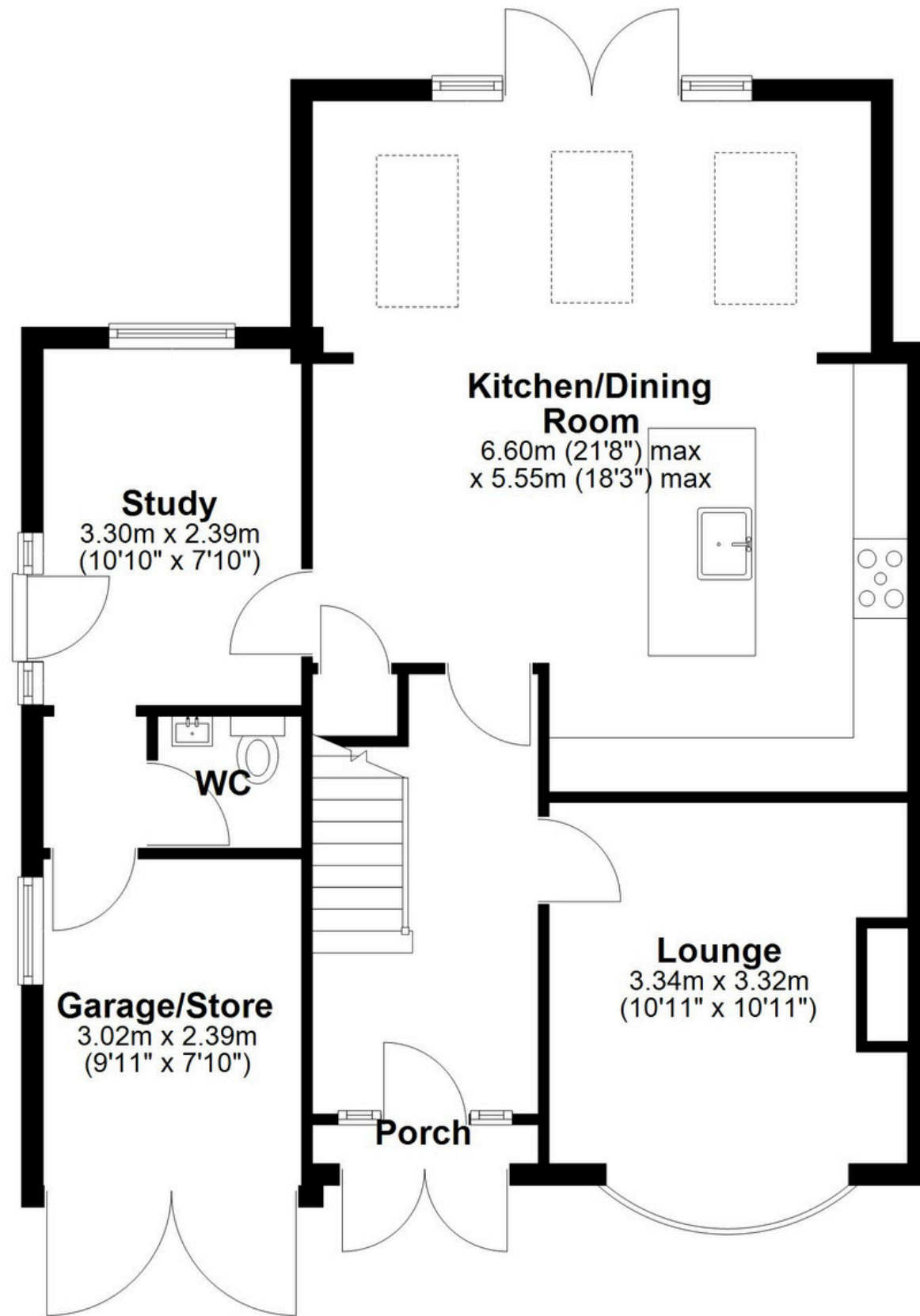
Tune into 'How's The Solihull Property Market Dom' weekly for a quick, insightful snapshot of the market.

The Mortgage Update

Get weekly insights and the best deals with our Mortgage Update, your shortcut to navigating the complex mortgage landscape confidently.

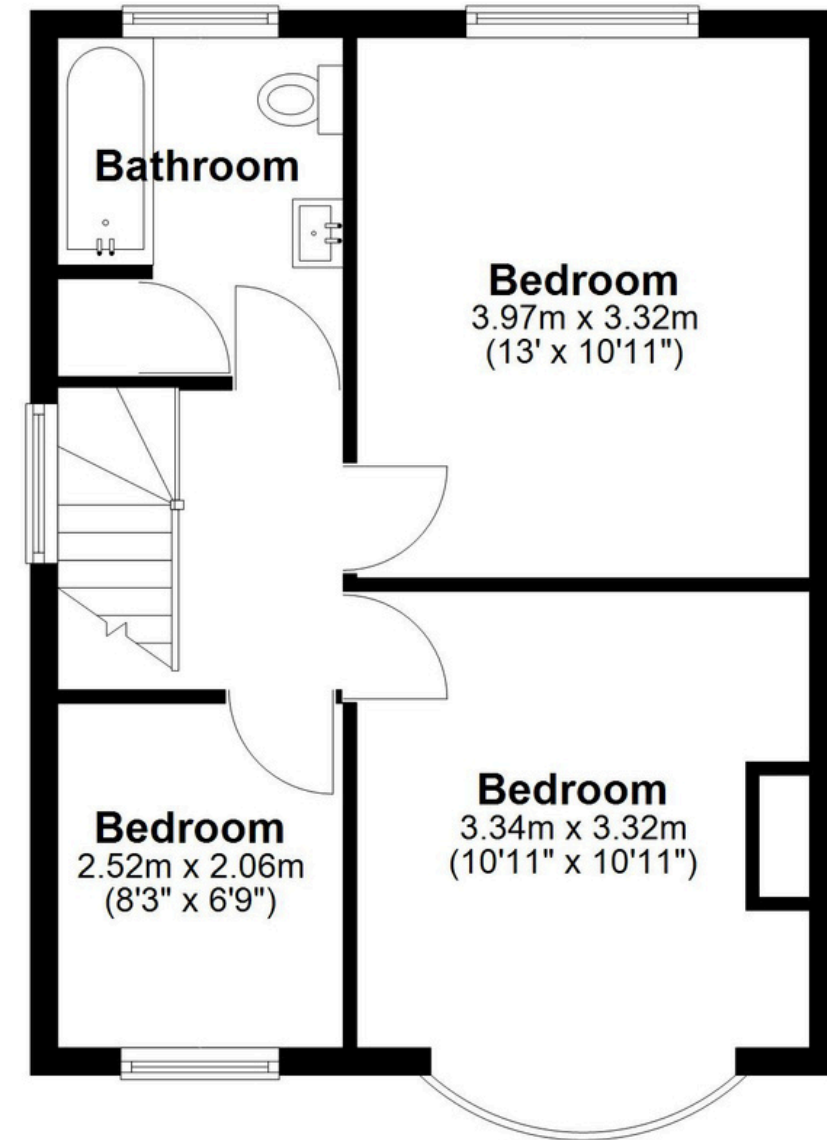
Ground Floor

Approx. 73.0 sq. metres (785.5 sq. feet)



First Floor

Approx. 41.0 sq. metres (441.6 sq. feet)



Total area: approx. 114.0 sq. metres (1227.1 sq. feet)

This floor plan is for illustration purposes only, this is not intended to be a measured/scaled survey or comply with RICS guidelines. All measurements (including total floor area) openings, orientation and floor area are approximate. No details are guaranteed, they cannot be relied upon for any purpose and do not form part of any agreement. A party must rely upon its own inspection(s). No responsibility is taken for any error, omission, or mis-statement.

Plan produced using PlanUp.