

Need a Mortgage in principle to make offers? Call us now for quick assistance!  
0121 775 0101



Do you need to sell? Start your journey now! Call us we can help.  
0121 775 0101



**SCAN FOR MORE INFO**  
**SIZE** - 1323 Sq Ft  
**TENURE** - Freehold  
**COUNCIL TAX** - Solihull Metropolitan Borough Council - E  
**BROADBAND** - Upload Max 1000Mbps Download Max 1800Mbps  
**MOBILE SERVICES** - EE - 87%, 3 - 82%, Vodafone - 82%, 02 - 70%  
**EPC** - D - 63  
**PARKING** - Garage & Unallocated Spaces  
**FLOODRISK** - Very Low  
**SERVICES** - Mains  
**COVENANTS** - N/A

## 5 Bickenhill Green Court

Church Lane, Bickenhill, B92 0DN  
Offers in the Region of £525,000

Nestled in the charming village of Bickenhill, this beautifully refurbished semi-detached barn-style property offers a perfect blend of modern living and countryside charm. This home has been meticulously renovated to a high specification, ensuring comfort and style throughout.

### FEATURES

- Fully Refurbished & Renovated Property
- Semi-Rural Location
- Stunning Open Plan Kitchen/Lounge/Family Area
- Study/TV/Play Room
- Ground Floor Double Bedroom
- Luxury Bathroom
- Utility Room
- Principal Bedroom & Further Bedroom to Second Floor
- Second Bathroom
- Patio, Communal Gardens & Open Views to Rear
- Single Garage & Unallocated Parking

Are you an investor interested in expanding your portfolio?

Call 0121 775 0101 to provide your investment criteria for alerts.



SCAN TO VIEW OUR WEEKLY FILMS & SUBSCRIBE

### Sneak Peeks

Every week, we unveil "Sneak Peeks," a feature showcasing exclusive properties before they hit Rightmove and other platforms.

### The Landlord Club

Join our Landlord Club for weekly updates on legislation, market trends, and our Letting Director's 'Investment Pick of the Week' for optimal ROI.

### HTSPMD

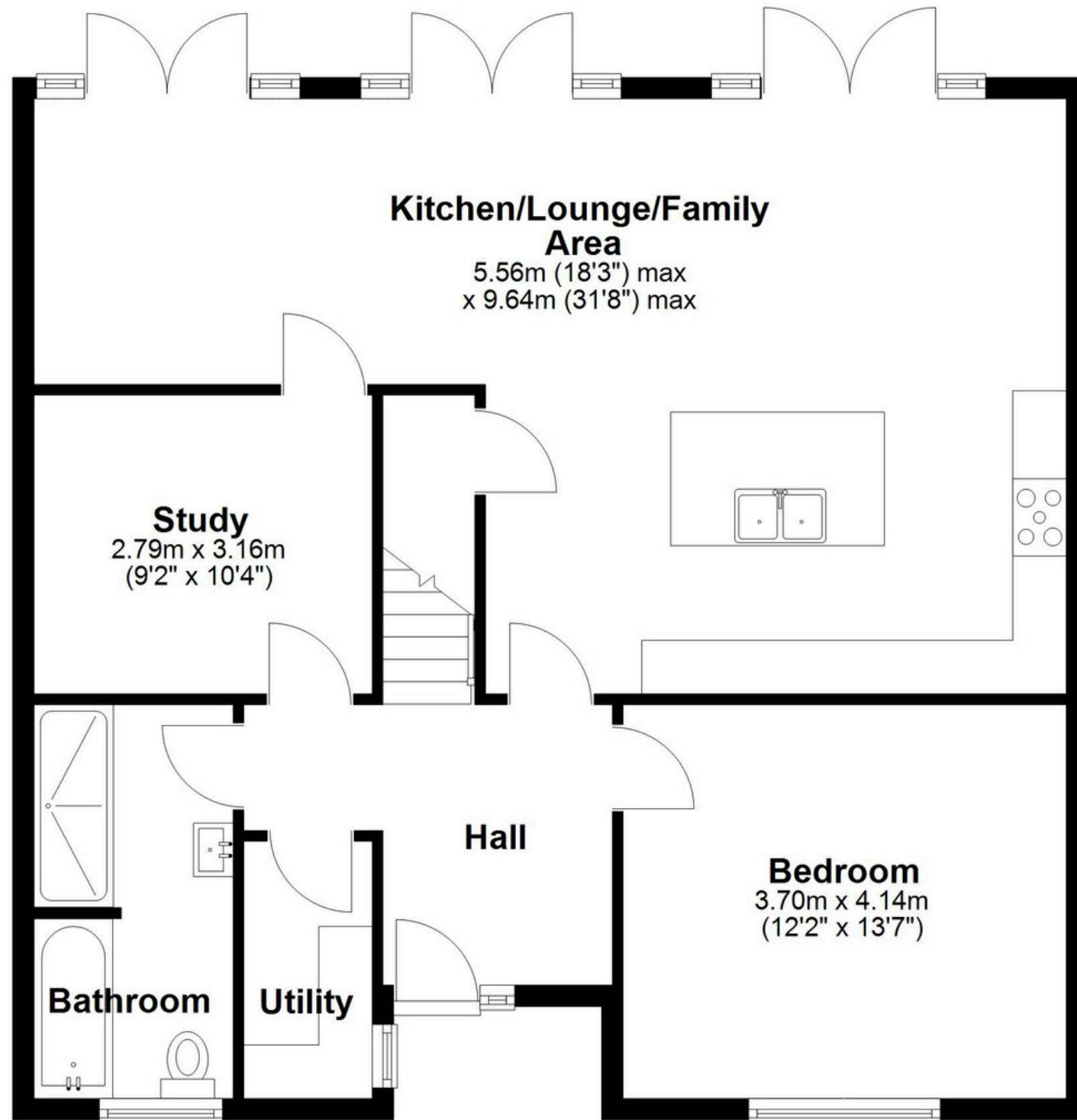
Tune into 'How's The Solihull Property Market Dom' weekly for a quick, insightful snapshot of the market.

### The Mortgage Update

Get weekly insights and the best deals with our Mortgage Update, your shortcut to navigating the complex mortgage landscape confidently.

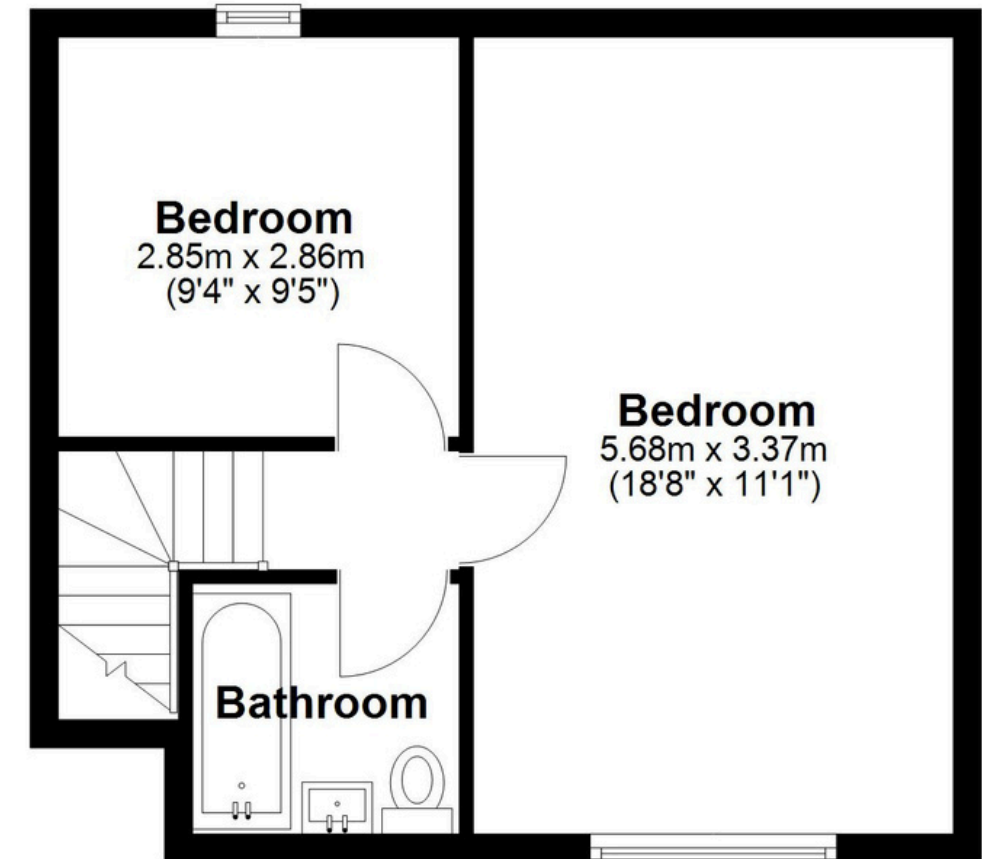
## Ground Floor

Approx. 87.7 sq. metres (943.5 sq. feet)



## First Floor

Approx. 35.3 sq. metres (380.2 sq. feet)



Total area: approx. 123.0 sq. metres (1323.7 sq. feet)

This floor plan is for illustration purposes only, this is not intended to be a measured/scaled survey or comply with RICS guidelines. All measurements (including total floor area) openings, orientation and floor area are approximate. No details are guaranteed, they cannot be relied upon for any purpose and do not form part of any agreement. A party must rely upon its own inspection(s). No responsibility is taken for any error, omission, or mis-statement.

Plan produced using PlanUp.