

Need a Mortgage in principle to make offers? Call us now for quick assistance!  
0121 775 0101



Do you need to sell? Start your journey now! Call us we can help.  
0121 775 0101



**SCAN FOR MORE INFO**  
**SIZE** - 1028 Sq Ft  
**TENURE** - Freehold  
**COUNCIL TAX** - Solihull Metropolitan Borough Council - C.  
**BROADBAND** - Upload Max 1000Mbps Download Max 1800Mbps  
**MOBILE SERVICES** - 3- 86%, EE - 83%, Vodafone - 76%, O2 - 75%  
**EPC** - D - 61  
**PARKING** - For at least 2 Cars  
**FLOODRISK** - Very Low  
**SERVICES** - Mains  
**COVENANTS** - N/A

## 187 Tanworth Lane

Shirley, B90 4BZ  
Offers in Excess of £425,000

A beautifully presented end-terrace house offering a delightful blend of comfort and style, making it an ideal home for families or professionals alike. This charming home on Tanworth Lane is a true gem, combining modern living with thoughtful design in a desirable location. The property is ready for immediate occupancy, as it comes with no upward chain.

### FEATURES

- Offered with No Upward Chain
- Beautifully Presented Throughout
- Living Room with Log Burner
- Separate Dining Room
- Modern Fitted Kitchen
- Three Good Sized Bedrooms
- Luxury Bathroom
- Low Maintenance Rear Garden
- Gravel Driveway
- Convenient Location

Are you an investor interested in expanding your portfolio?

Call 0121 775 0101 to provide your investment criteria for alerts.



SCAN TO VIEW OUR WEEKLY FILMS & SUBSCRIBE

### Sneak Peeks

Every week, we unveil "Sneak Peeks," a feature showcasing exclusive properties before they hit Rightmove and other platforms.

### The Landlord Club

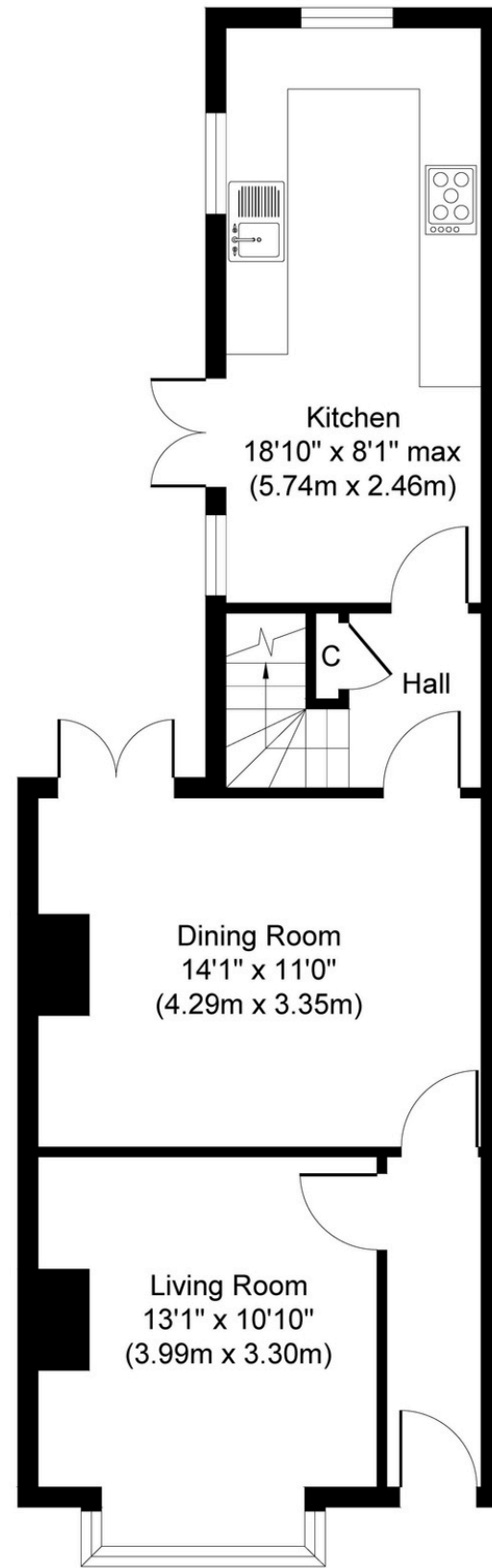
Join our Landlord Club for weekly updates on legislation, market trends, and our Letting Director's 'Investment Pick of the Week' for optimal ROI.

### HTSPMD

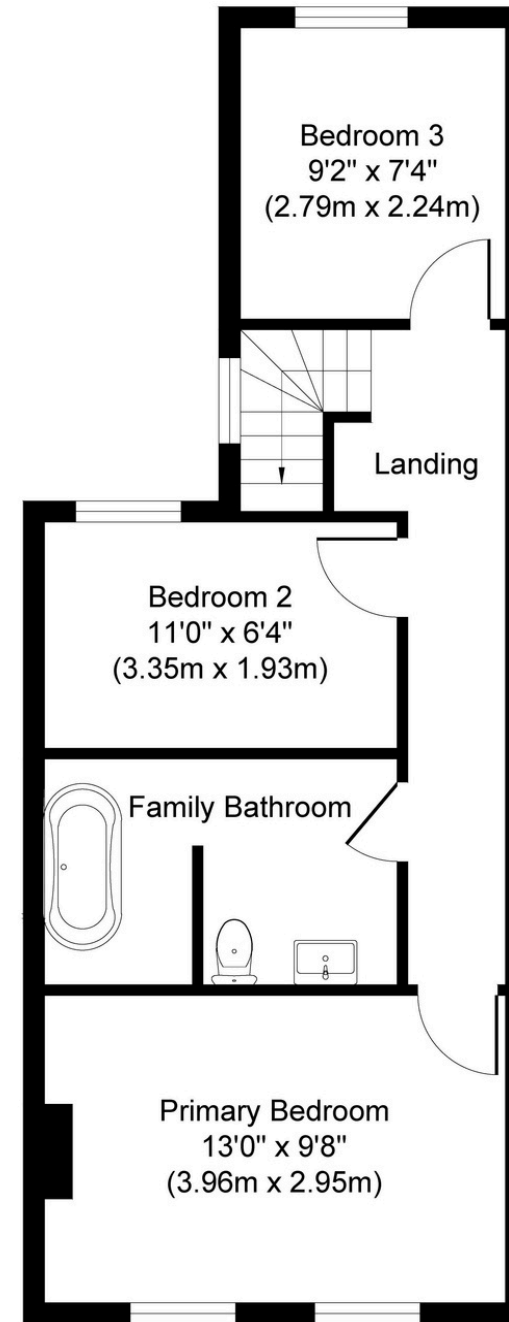
Tune into 'How's The Solihull Property Market Dom' weekly for a quick, insightful snapshot of the market.

### The Mortgage Update

Get weekly insights and the best deals with our Mortgage Update, your shortcut to navigating the complex mortgage landscape confidently.



**Ground Floor**  
**Approximate Floor Area**  
**546 sq. ft**  
**(50.75 sq. m)**



**First Floor**  
**Approximate Floor Area**  
**482 sq. ft**  
**(44.79 sq. m)**

Whilst every attempt has been made to ensure the accuracy of the floor plan contained here, measurements of doors, windows, rooms and any other items are approximate and no responsibility is taken for any error, omission, or mis-statement. The measurements should not be relied upon for valuation, transaction and/or funding purposes. This plan is for illustrative purposes only and should be used as such by any prospective purchaser or tenant. The services, systems and appliances shown have not been tested and no guarantee as to their operability or efficiency can be given.  
 Copyright V360 Ltd 2026 | [www.houseviz.com](http://www.houseviz.com)