

Need a Mortgage in principle to make offers? Call us now for quick assistance!
0121 775 0101



Do you need to sell? Start your journey now! Call us we can help.
0121 775 0101



67 Willow Road

Solihull, B91 1UF
Offers in the Region of £450,000

SCAN FOR MORE INFO
SIZE - 1224 Sq Ft
TENURE - Freehold
COUNCIL TAX - Solihull Metropolitan Borough Council - D
BROADBAND - Upload Max 1000Mbps Download Max 1800Mbps
MOBILE SERVICES - 3 - 84%, EE - 82%, O2 - 80%, Vodafone - 78%
EPC - D - 63
PARKING - For at least 4 Cars
FLOODRISK - Very Low
SERVICES - Mains
COVENANTS - N/A

This traditional three-bedroom semi-detached house offers a perfect blend of comfort and style and exudes character while providing modern conveniences for contemporary living. This property is situated in a delightful residential area, making it an ideal choice for families seeking a peaceful yet convenient location.

FEATURES

- Well Presented Traditional Semi-Detached Property
- Bright Lounge
- Stunning Modern Breakfast Kitchen
- Spacious Separate Utility Room
- Conservatory Overlooking the Garden
- Three Double Bedrooms
- Shower Room
- South West Facing Rear Garden
- Single Garage with Driveway Parking
- Conveniently Located for Local Amenities

Are you an investor interested in expanding your portfolio?

Call 0121 775 0101 to provide your investment criteria for alerts.



SCAN TO VIEW OUR WEEKLY FILMS & SUBSCRIBE

Sneak Peeks

Every week, we unveil "Sneak Peeks," a feature showcasing exclusive properties before they hit Rightmove and other platforms.

The Landlord Club

Join our Landlord Club for weekly updates on legislation, market trends, and our Letting Director's 'Investment Pick of the Week' for optimal ROI.

HTSPMD

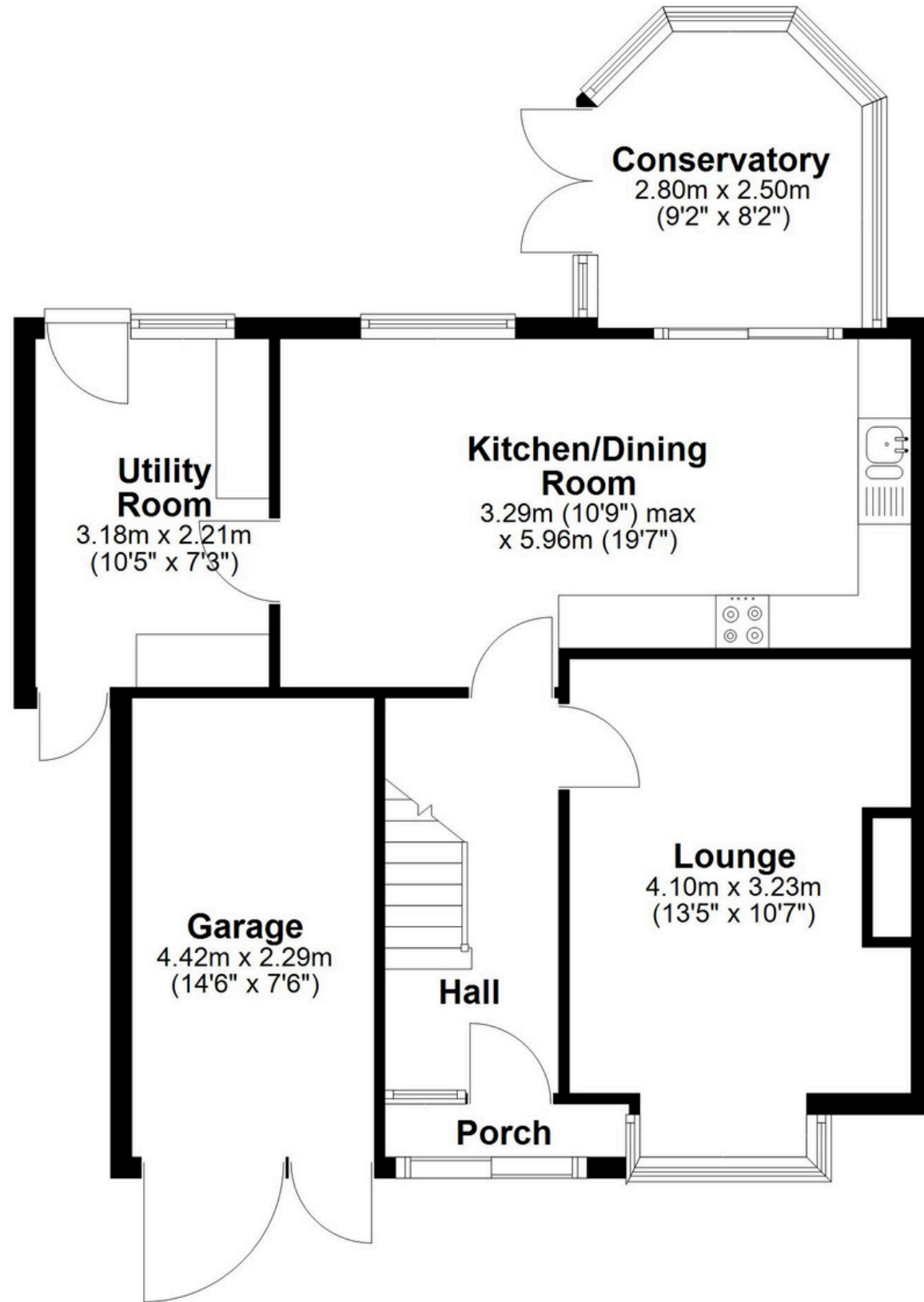
Tune into 'How's The Solihull Property Market Dom' weekly for a quick, insightful snapshot of the market.

The Mortgage Update

Get weekly insights and the best deals with our Mortgage Update, your shortcut to navigating the complex mortgage landscape confidently.

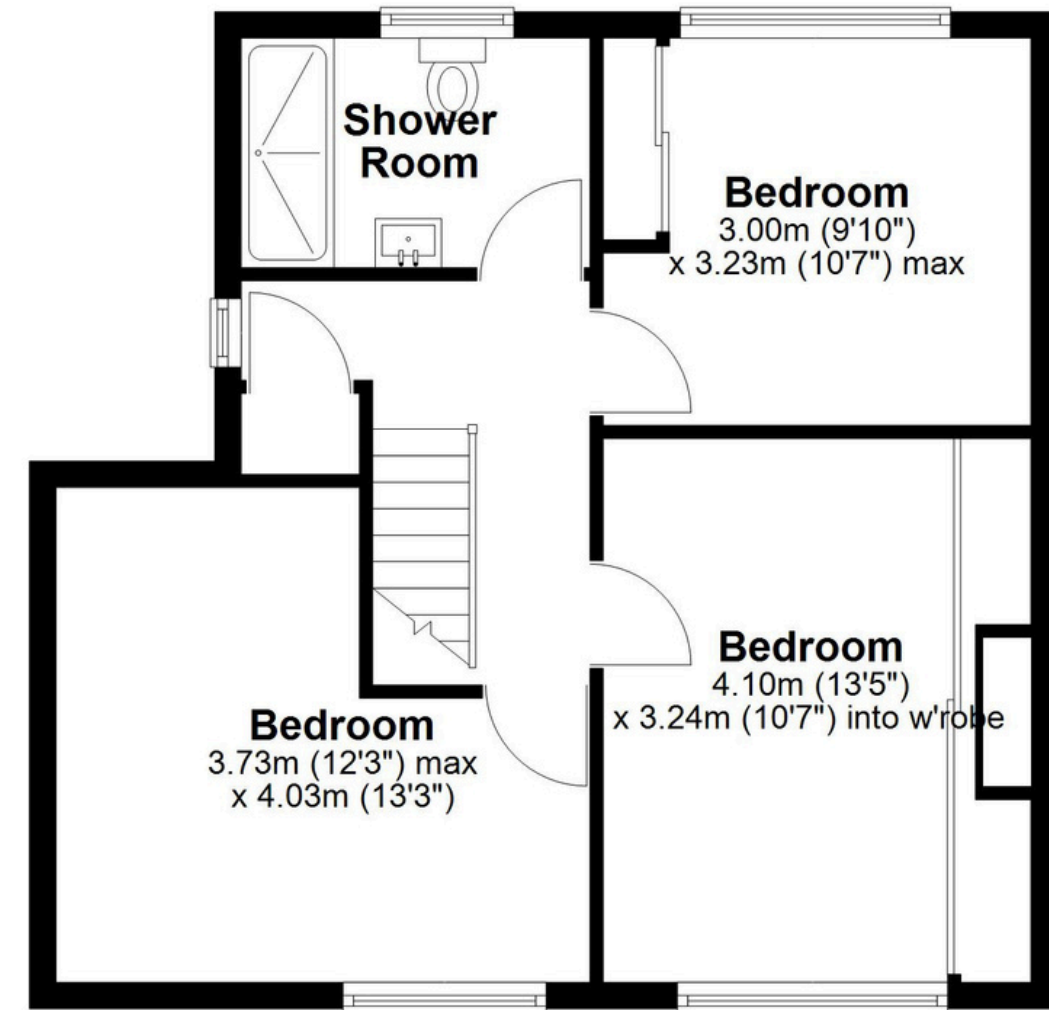
Ground Floor

Approx. 65.9 sq. metres (709.5 sq. feet)



First Floor

Approx. 47.9 sq. metres (515.2 sq. feet)



Total area: approx. 113.8 sq. metres (1224.7 sq. feet)

This floor plan is for illustration purposes only, this is not intended to be a measured/scaled survey or comply with RICS guidelines. All measurements (including total floor area) openings, orientation and floor area are approximate. No details are guaranteed, they cannot be relied upon for any purpose and do not form part of any agreement. A party must rely upon its own inspection(s). No responsibility is taken for any error, omission, or mis-statement.

Plan produced using PlanUp.