

Need a Mortgage in principle to make offers? Call us now for quick assistance!
0121 775 0101



Do you need to sell? Start your journey now! Call us we can help.
0121 775 0101



SCAN FOR MORE INFO
SIZE - 1035 Sq Ft
TENURE - Freehold
COUNCIL TAX - Solihull Metropolitan Borough Council - D
BROADBAND - Upload Max 1000Mbps Download Max 1800Mbps
MOBILE SERVICES - 3 - 86%, EE - 83%, Vodafone - 76%, 02 - 75%
EPC - C - 74
PARKING - For at least 3 Cars
FLOODRISK - Very Low
SERVICES - Mains
COVENANTS - N/A

41 Mollington Crescent

Shirley, B90 3RQ
Offers in the Region of £350,000

This charming end terrace property that is sure to capture your heart. Don't miss out on the opportunity to make this house your home. With three good-sized bedrooms, this property offers the perfect blend of comfort and style. Move right in and start creating lasting memories.

FEATURES

- Beautifully Presented Property
- Tudor Grange Academy Catchment
- Dual Aspect Lounge/Dining Room
- Fitted Kitchen with Garden Access
- Three Good Sized Bedrooms
- Four Piece Family Bathroom
- Private Landscaped Rear Garden
- Driveway Parking for 3 Vehicles
- Single Garage with Electronically Operated Door
- Convenient Location

Are you an investor interested in expanding your portfolio?

Call 0121 775 0101 to provide your investment criteria for alerts.



SCAN TO VIEW OUR WEEKLY FILMS & SUBSCRIBE

Sneak Peeks

Every week, we unveil "Sneak Peeks," a feature showcasing exclusive properties before they hit Rightmove and other platforms.

The Landlord Club

Join our Landlord Club for weekly updates on legislation, market trends, and our Letting Director's 'Investment Pick of the Week' for optimal ROI.

HTSPMD

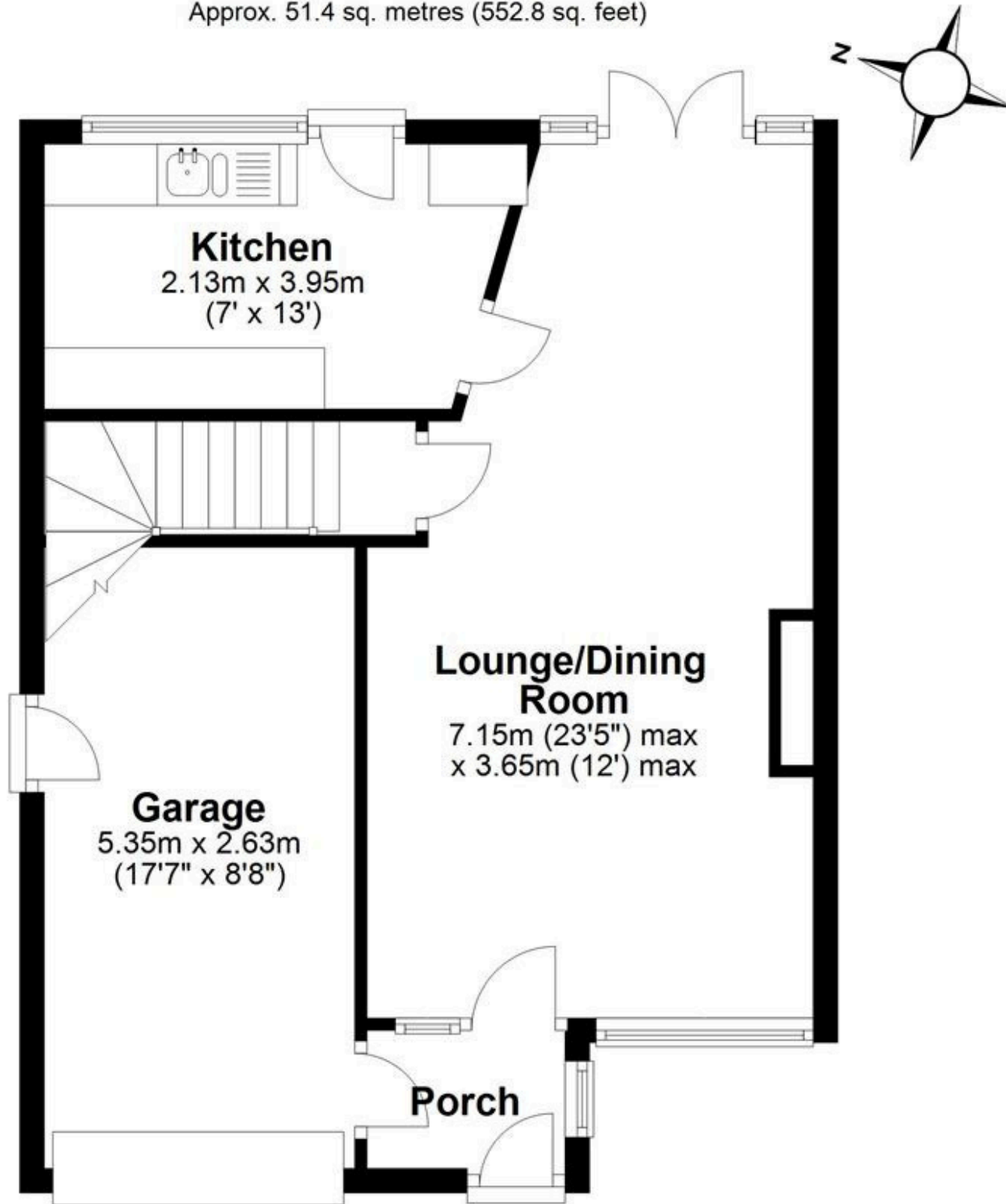
Tune into 'How's The Solihull Property Market Dom' weekly for a quick, insightful snapshot of the market.

The Mortgage Update

Get weekly insights and the best deals with our Mortgage Update, your shortcut to navigating the complex mortgage landscape confidently.

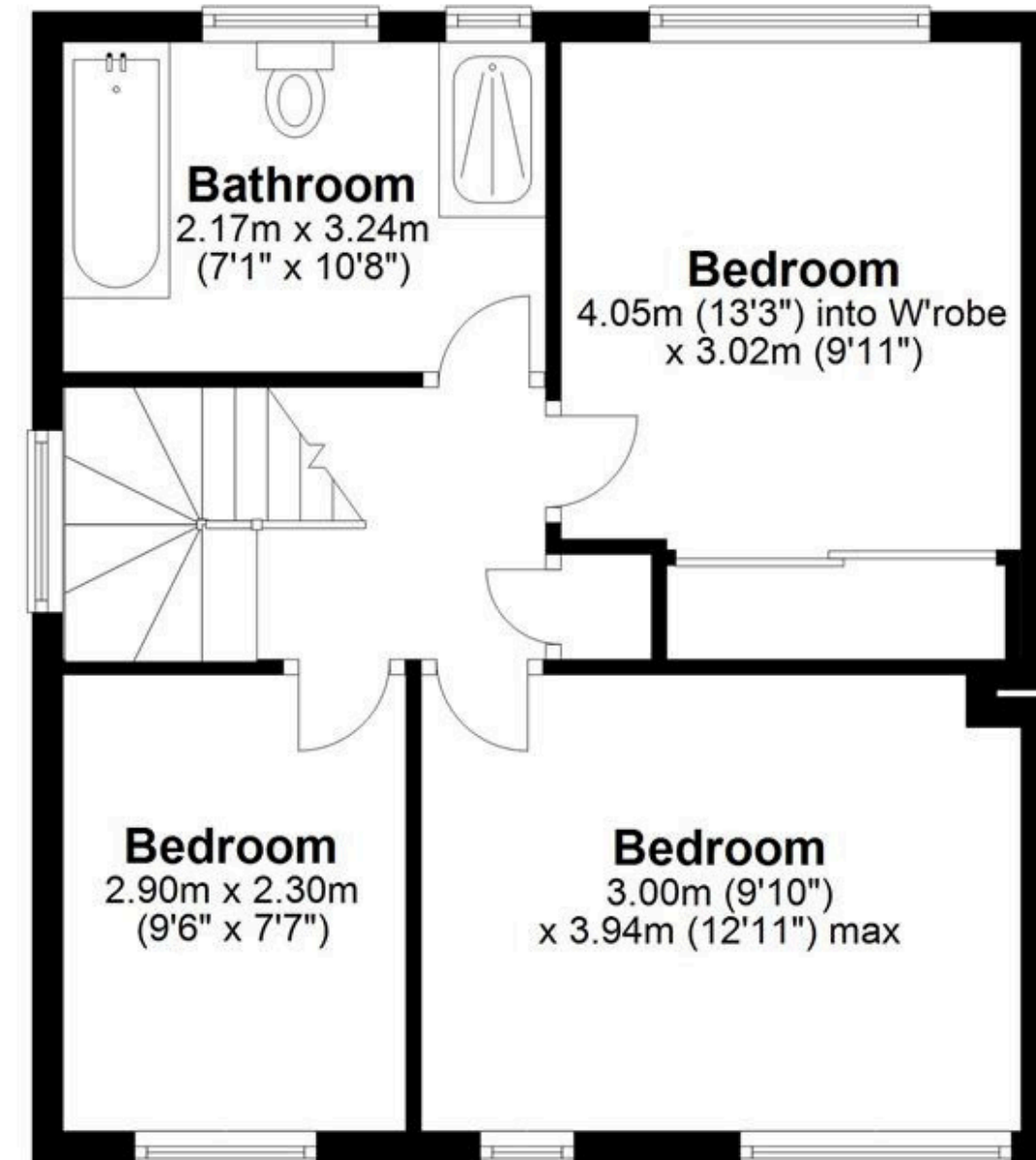
Ground Floor

Approx. 51.4 sq. metres (552.8 sq. feet)



First Floor

Approx. 44.9 sq. metres (482.9 sq. feet)



Total area: approx. 96.2 sq. metres (1035.7 sq. feet)

This floor plan is for illustration purposes only, this is not intended to be a measured/scaled survey or comply with RICS guidelines. All measurements (including total floor area) openings, orientation and floor area are approximate. No details are guaranteed, they cannot be relied upon for any purpose and do not form part of any agreement. A party must rely upon its own inspection(s). No responsibility is taken for any error, omission, or mis-statement.

Plan produced using PlanUp.