

Need a Mortgage in principle to make offers? Call us now for quick assistance!  
0121 775 0101



Do you need to sell? Start your journey now! Call us we can help.  
01564 777 314



## Fallowlea, Conker Lane

Dorridge, B93 8NX  
Offers Over £800,000

Situated at the end of a private drive, Fallowlea presents a remarkable opportunity for those looking to create their dream home. This unique property, being the only detached residence on Conker Lane, is ripe for conversion and full modernisation, making it a fantastic canvas for those looking to imprint their personal style.

### FEATURES

- Full Renovation Project
- Fantastic Potential
- Dining Room Leading to Spacious Lounge
- Kitchen with Breakfast Room
- Utility Area, Shower Rom & Ground Floor Bedroom
- Four Good Sized Double Bedrooms
- Fifth Bedroom/Nursery
- Family Bathroom
- Private Enclosed Rear Garden
- Expansive Driveway with Single Garage
- Arden Academy Catchment

### SCAN FOR MORE INFO

**SIZE** - 1791 Sq Ft  
**TENURE** - Freehold  
**COUNCIL TAX** - Solihull Metropolitan Borough Council -  
**BROADBAND** - Superfast Upload 20Mbps Download 94Mbps  
**MOBILE** - EE - 83%, Vodafone - 79%, 3 - 78%. 02 - 76%  
**EPC** - D - 64  
**PARKING** - Driveway & Single Garage  
**FLOODRISK** - Very Low  
**SERVICES** - Mains  
**COVENANTS** - N/A

Are you an investor interested in expanding your portfolio?

Call 01564 777 314 to provide your investment criteria for alerts.

### Sneak Peeks

Every week, we unveil "Sneak Peeks," a feature showcasing exclusive properties before they hit Rightmove and other platforms.

### The Landlord Club

Join our Landlord Club for weekly updates on legislation, market trends, and our Letting Director's 'Investment Pick of the Week' for optimal ROI.

### HTSPMD

Tune into 'How's The Solihull Property Market Dom' weekly for a quick, insightful snapshot of the market.

### The Mortgage Update

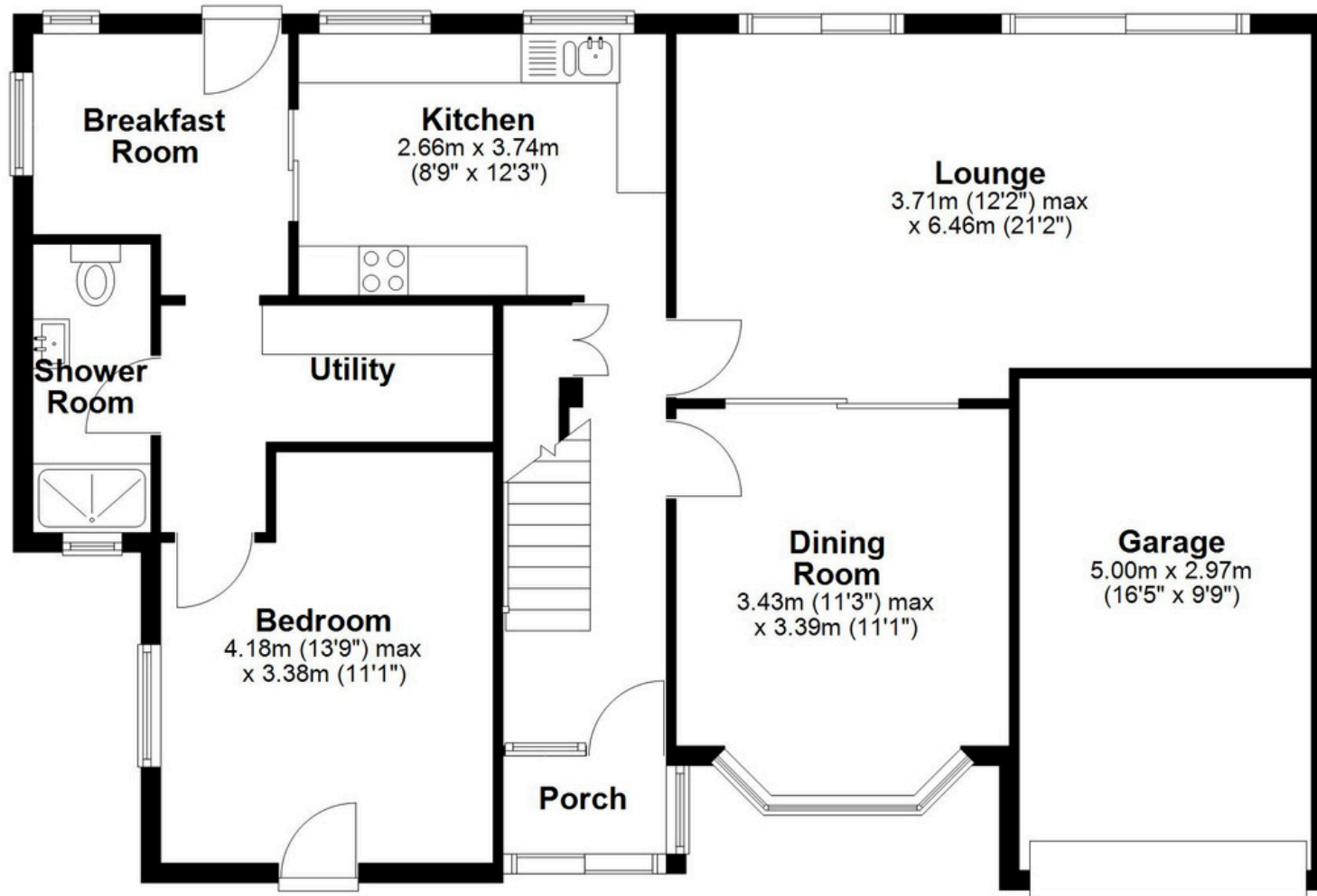
Get weekly insights and the best deals with our Mortgage Update, your shortcut to navigating the complex mortgage landscape confidently.



SCAN TO VIEW OUR WEEKLY FILMS & SUBSCRIBE

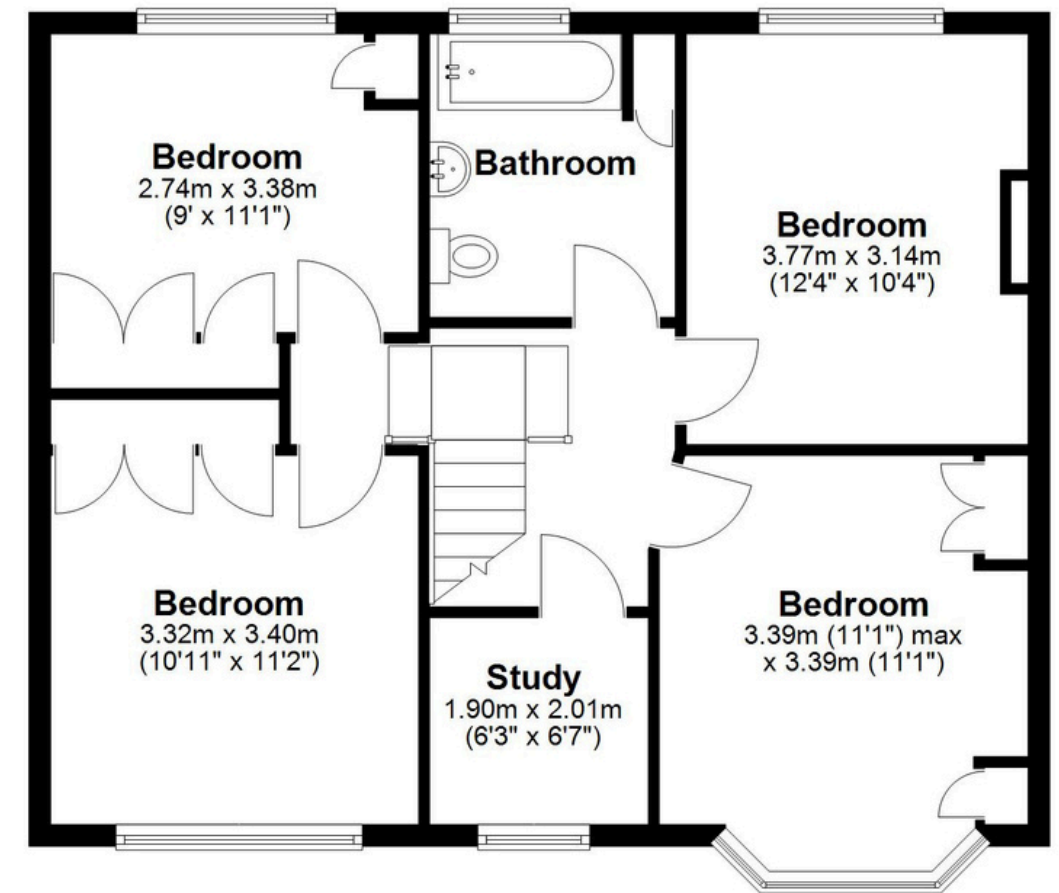
### Ground Floor

Approx. 101.1 sq. metres (1088.6 sq. feet)



### First Floor

Approx. 65.3 sq. metres (703.0 sq. feet)



Total area: approx. 166.4 sq. metres (1791.6 sq. feet)

This floor plan is for illustration purposes only, this is not intended to be a measured/scaled survey or comply with RICS guidelines. All measurements (including total floor area) openings, orientation and floor area are approximate. No details are guaranteed, they cannot be relied upon for any purpose and do not form part of any agreement. A party must rely upon its own inspection(s). No responsibility is taken for any error, omission, or mis-statement.  
Plan produced using PlanUp.