

Need a Mortgage in principle to make offers? Call us now for quick assistance!  
0121 775 0101



Do you need to sell? Start your journey now! Call us we can help.  
0121 775 0101



**SCAN FOR MORE INFO**  
**SIZE** - 1573 Sq Ft  
**TENURE** - Freehold  
**COUNCIL TAX** - Solihull Metropolitan Borough Council - E  
**BROADBAND** - Upload Max 1000Mbps Download Max 1000Mbps  
**MOBILE SERVICES** - EE - 85%, 3 - 85%, O2 - 81%, Vodafone - 80%  
**EPC** - D - 60  
**PARKING** - For at least 3 Cars  
**FLOODRISK** - Very Low  
**SERVICES** - Mains  
**COVENANTS** - N/A

**19 St. Helens Road**  
**Solihull, B91 2DB**  
**Offers in the Region of £535,000**

A traditional semi-detached house presenting an excellent opportunity for those looking to create their dream home. This home not only offers fantastic potential for extension (subject to planning permission) but also invites you to put your own stamp on it. Offered with no upward chain.

**FEATURES**

- Traditional Semi-Detached Property with No Upward Chain
- Fantastic Potential (STPP)
- Dinign Room with Bay Window to Front
- Lounge with French Doors to Garden
- Breakfast Kitchen with Useful Storage Rooms
- Two Excellent Sized Double Bedrooms
- Third Single Bedroom with Built-In Wardrobes
- Family Bathroom & Separate W.C.
- Private South East Facing Garden
- Ample Driveway Parking & Single Garage
- Convenient Location

Are you an investor interested in expanding your portfolio?

**Call 0121 775 0101 to provide your investment criteria for alerts.**



SCAN TO VIEW OUR WEEKLY FILMS & SUBSCRIBE

**Sneak Peeks**

Every week, we unveil "Sneak Peeks," a feature showcasing exclusive properties before they hit Rightmove and other platforms.

**The Landlord Club**

Join our Landlord Club for weekly updates on legislation, market trends, and our Letting Director's 'Investment Pick of the Week' for optimal ROI.

**HTSPMD**

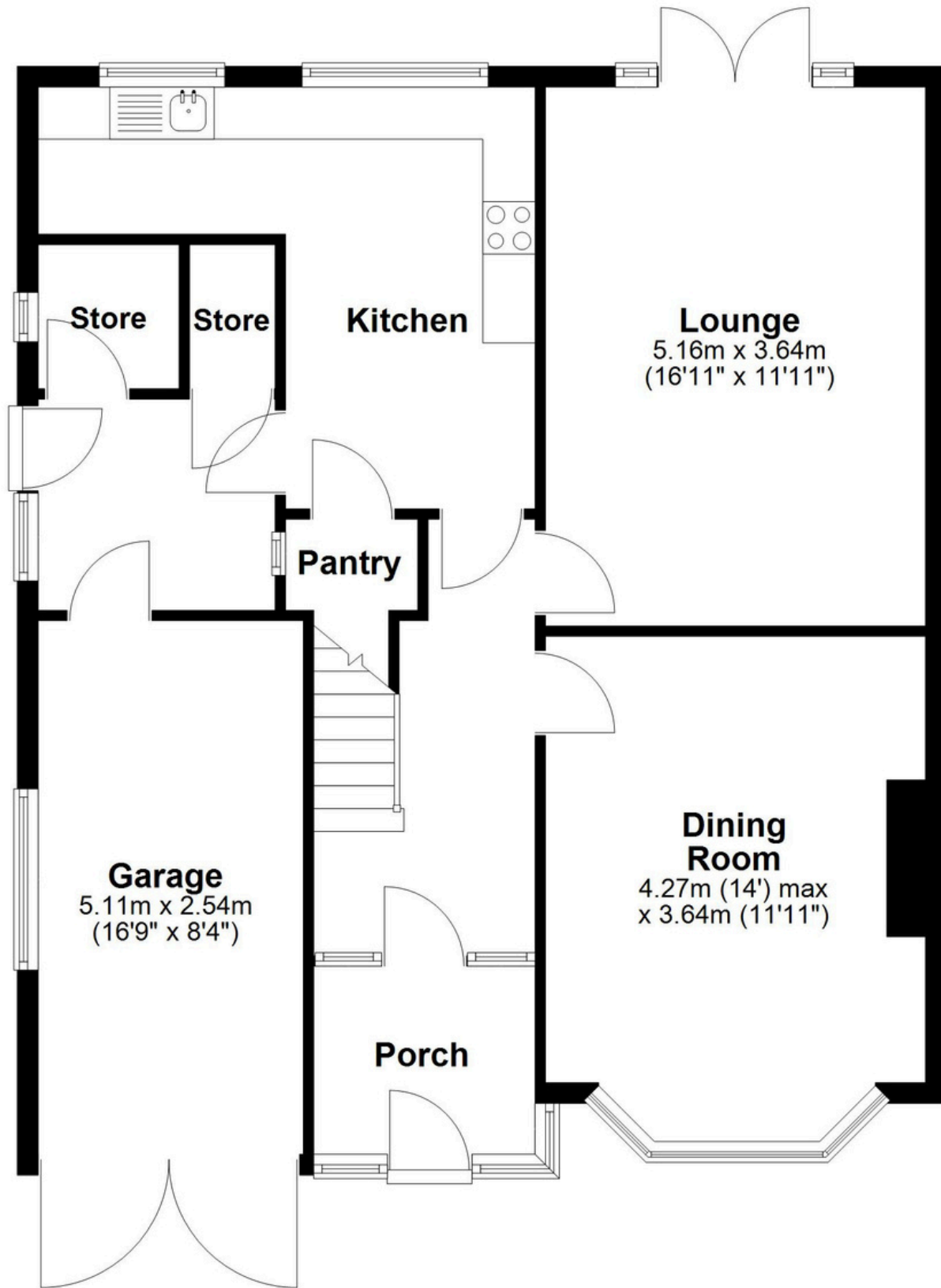
Tune into 'How's The Solihull Property Market Dom' weekly for a quick, insightful snapshot of the market.

**The Mortgage Update**

Get weekly insights and the best deals with our Mortgage Update, your shortcut to navigating the complex mortgage landscape confidently.

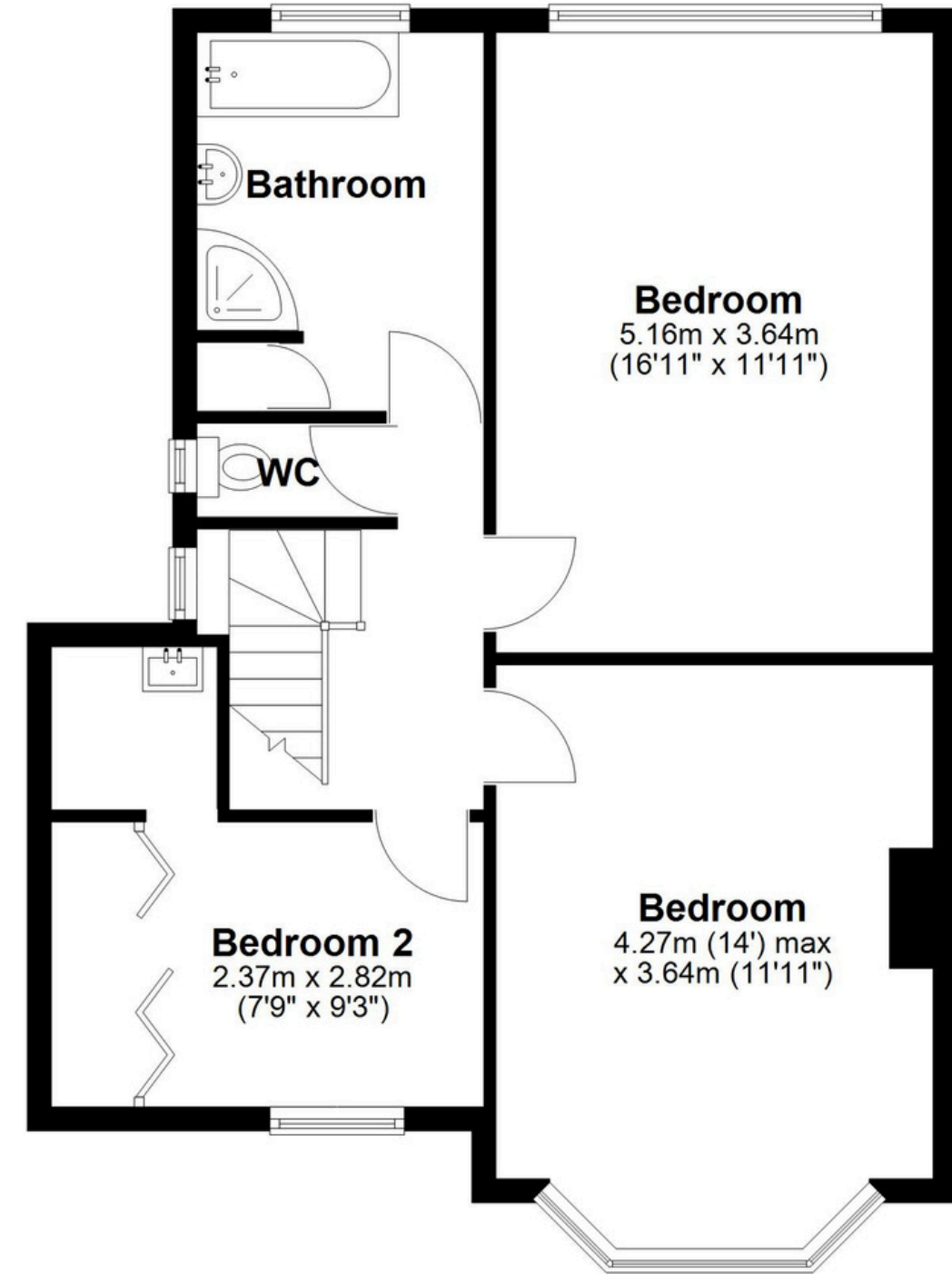
## Ground Floor

Approx. 84.1 sq. metres (905.4 sq. feet)



## First Floor

Approx. 62.0 sq. metres (667.8 sq. feet)



Total area: approx. 146.2 sq. metres (1573.2 sq. feet)

This floor plan is for illustration purposes only, this is not intended to be a measured/scaled survey or comply with RICS guidelines. All measurements (including total floor area) openings, orientation and floor area are approximate. No details are guaranteed, they cannot be relied upon for any purpose and do not form part of any agreement. A party must rely upon its own inspection(s). No responsibility is taken for any error, omission, or mis-statement.

Plan produced using PlanUp.