

Need a Mortgage in principle to make offers? Call us now for quick assistance!
0121 775 0101



Do you need to sell? Start your journey now! Call us we can help.
0121 775 0101



SCAN FOR MORE INFO
SIZE - 1274 Sq Ft
TENURE - Freehold
COUNCIL TAX - Solihull Metropolitan Borough Council - C
BROADBAND - Upload Max 1000Mbps Download Max 1800Mbps
MOBILE SERVICES - EE - 87%, 3 - 82%, Vodafone - 82%, 02 - 80%
EPC - D - 61
PARKING - For at least 2 Cars
FLOODRISK - Very Low
SERVICES - Mains
COVENANTS - N/A

134 Ulverley Green Road

Solihull, B92 8AA
Offers in Excess of £450,000

This gorgeous family home is well maintained throughout and consists of a newly extended breakfast/kitchen, two reception rooms, a downstairs shower room and a single integrated garage. Upstairs you are presented with four bedrooms with the principal bedroom and second largest bedroom boasting ensuite shower rooms and fitted wardrobes. Completing upstairs is the modern family bathroom. Conveniently located close to local amenities such as schools, shops and travel links this property is perfect for growing families.

FEATURES

- Beautifully Presented Semi-Detached Property
- Welcoming Hallway with Minton Tiles
- Lounge to the Front Elevation
- Formal Dining Room
- Bright Sitting Room with French Doors to the Garden
- Stunning Fitted Kitchen with Access to Garden
- Principal Bedroom with en-Suite Shower Room
- Two Further Double Bedrooms
- Four Piece Family Bathroom
- South West Facing Rear Garden
- Driveway Parking for 2 Vehicles

Are you an investor interested in expanding your portfolio?

Call 0121 775 0101 to provide your investment criteria for alerts.



SCAN TO VIEW OUR WEEKLY FILMS & SUBSCRIBE

Sneak Peeks

Every week, we unveil "Sneak Peeks," a feature showcasing exclusive properties before they hit Rightmove and other platforms.

The Landlord Club

Join our Landlord Club for weekly updates on legislation, market trends, and our Letting Director's 'Investment Pick of the Week' for optimal ROI.

HTSPMD

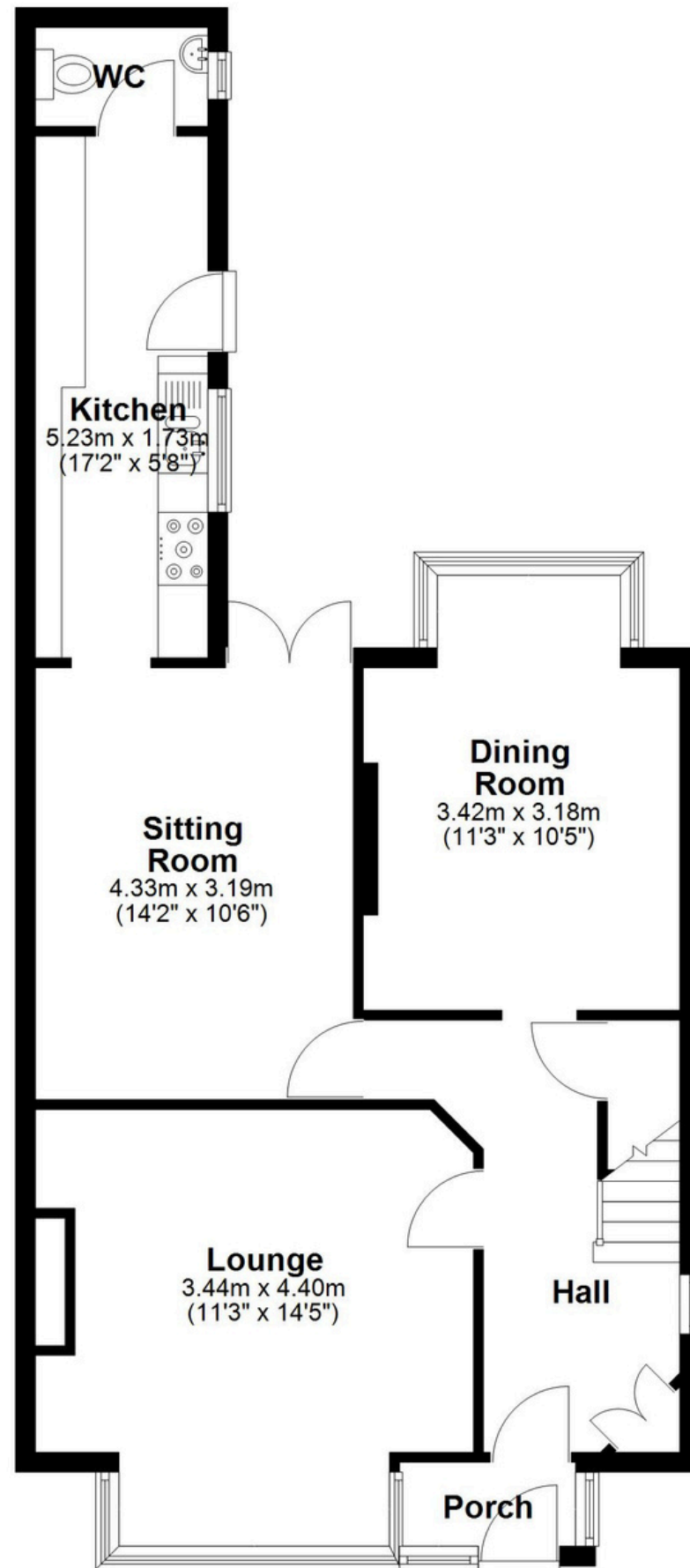
Tune into 'How's The Solihull Property Market Dom' weekly for a quick, insightful snapshot of the market.

The Mortgage Update

Get weekly insights and the best deals with our Mortgage Update, your shortcut to navigating the complex mortgage landscape confidently.

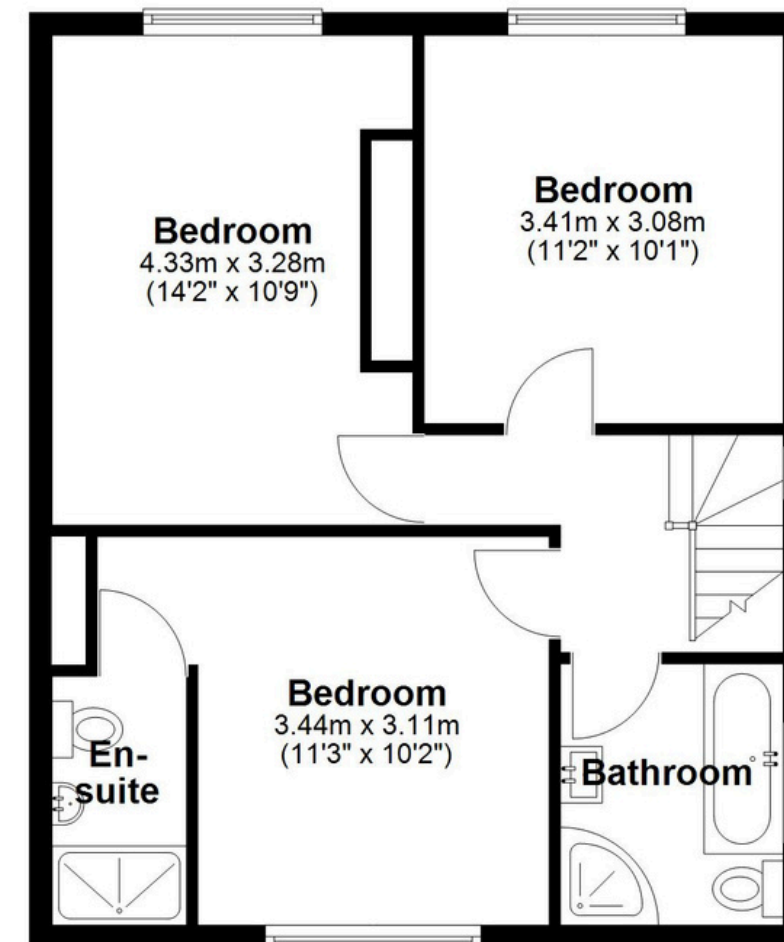
Ground Floor

Approx. 68.0 sq. metres (731.7 sq. feet)



First Floor

Approx. 50.4 sq. metres (542.9 sq. feet)



Total area: approx. 118.4 sq. metres (1274.6 sq. feet)

This floor plan is for illustration purposes only, this is not intended to be a measured/scaled survey or comply with RICS guidelines. All measurements (including total floor area) openings, orientation and floor area are approximate. No details are guaranteed, they cannot be relied upon for any purpose and do not form part of any agreement. A party must rely upon its own inspection(s). No responsibility is taken for any error, omission, or mis-statement.

Plan produced using PlanUp.