

Need a Mortgage in principle to make offers? Call us now for quick assistance!  
0121 775 0101



Do you need to sell? Start your journey now! Call us we can help.  
01564 777 314



## 3 Dunham Croft

Dorridge, B93 8RZ

**SCAN FOR MORE INFO**  
**SIZE** - 2593 Sq Ft  
**TENURE** - Freehold  
**COUNCIL TAX** - Solihull Metropolitan Borough Council - G  
**BROADBAND** - Upload Max 1000Mbps Download Max 1800Mbps  
**MOBILE** - 3 - 85%, EE - 82%, O2 - 80%, Vodafone - 78%  
**EPC** - D - 71  
**PARKING** - Double Garage & Driveway  
**FLOODRISK** - Very Low  
**SERVICES** - Mains  
**COVENANTS** - N/A

Situated in a quiet cul-de-sac, this substantial detached family home offers an impressive living accommodation, perfect for modern family life. With no upward chain, this property is ready for you to move in and make it your own. This exceptional home combines comfort, style and practicality, making it an ideal choice for families seeking a peaceful yet convenient location.

### FEATURES

- Five Bedroom Detached House
- Two Reception Rooms
- Fitted Breakfast Kitchen
- Large Conservatory with Underfloor Heating
- Two En-Suites & Family Bathroom
- Double Garage & Ample Parking
- Private South Facing Low Maintenance Rear Garden
- Walking Distance to Dorridge Village & Station
- Quiet Cul-de-Sac Location
- Arden Academy Catchment

Are you an investor interested in expanding your portfolio?

Call 01564 777 314 to provide your investment criteria for alerts.

### Sneak Peeks

Every week, we unveil "Sneak Peeks," a feature showcasing exclusive properties before they hit Rightmove and other platforms.

### The Landlord Club

Join our Landlord Club for weekly updates on legislation, market trends, and our Letting Director's 'Investment Pick of the Week' for optimal ROI.

### HTSPMD

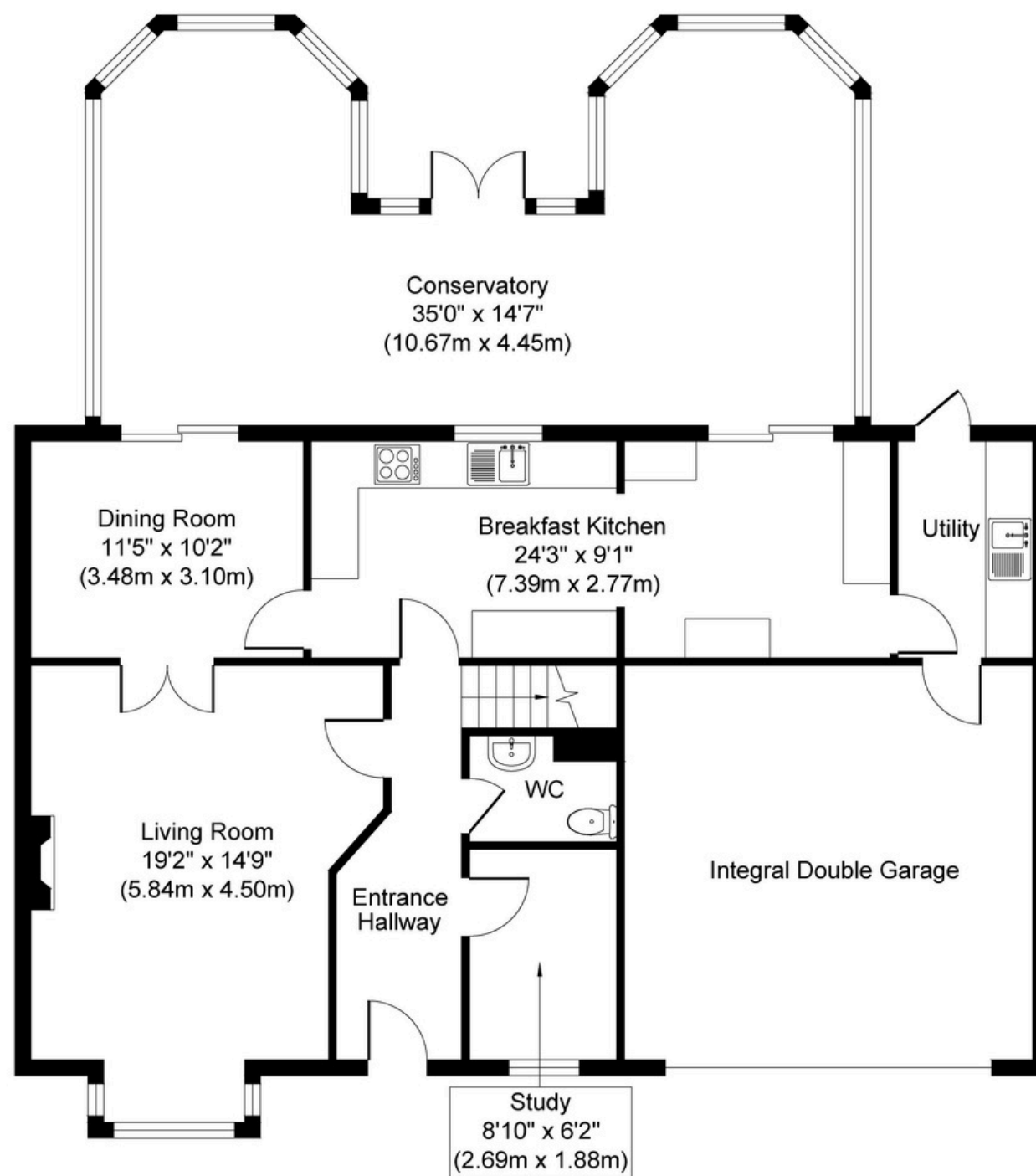
Tune into 'How's The Solihull Property Market Dom' weekly for a quick, insightful snapshot of the market.

### The Mortgage Update

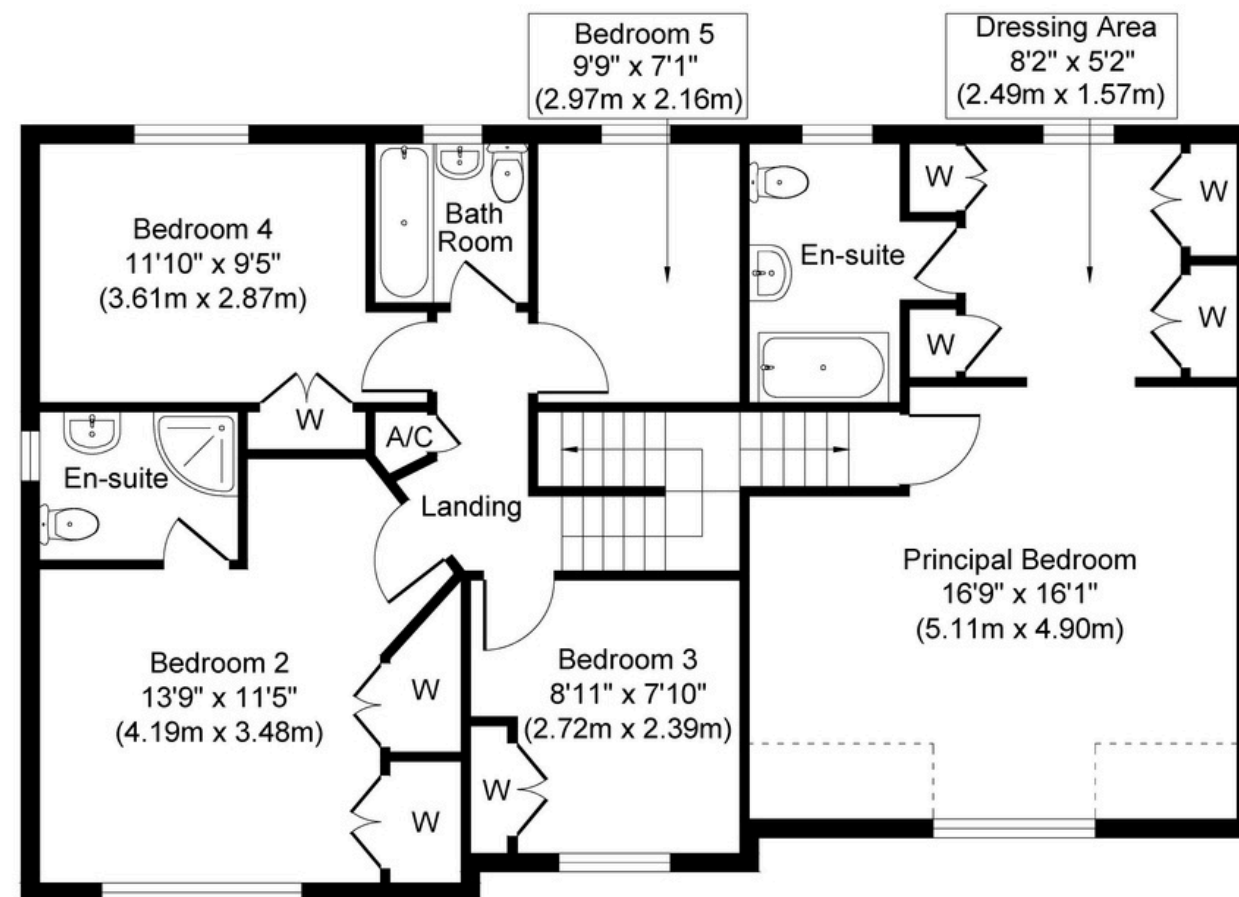
Get weekly insights and the best deals with our Mortgage Update, your shortcut to navigating the complex mortgage landscape confidently.



SCAN TO VIEW OUR WEEKLY FILMS & SUBSCRIBE



**Ground Floor**  
Approximate Floor Area  
**1553 sq. ft**  
**(144.28 sq. m)**



**First Floor**  
Approximate Floor Area  
**1040 sq. ft**  
**(96.59 sq. m)**

Whilst every attempt has been made to ensure the accuracy of the floor plan contained here, measurements of doors, windows, rooms and any other items are approximate and no responsibility is taken for any error, omission, or mis-statement. The measurements should not be relied upon for valuation, transaction and/or funding purposes. This plan is for illustrative purposes only and should be used as such by any prospective purchaser or tenant.

The services, systems and appliances shown have not been tested and no guarantee as to their operability or efficiency can be given.