

Need a Mortgage in principle to make offers? Call us now for quick assistance!
0121 775 0101



Do you need to sell? Start your journey now! Call us we can help.
0121 775 0101



38 Shalford Road

Solihull, B92 7NF
Offers in Excess of £350,000

This beautifully presented semi-detached house has been extended and offers a delightful blend of comfort and modern living which makes it an ideal choice for families looking to upsize.

FEATURES

- A Well Presented Semi-Detached Property
- Dining Room to the Front
- Lounge with French Doors to Garden
- Modern Fitted kitchen with Separate Utility Room
- Two Good Sized Double Bedrooms
- Third Single Bedroom/Nursery/Home Office
- Luxury Shower Room
- Private Rear Garden with Versatile Garden Room
- Driveway Parking
- Single Garage
- Convenient Location



SCAN FOR MORE INFO

SIZE - 1223 Sq Ft
TENURE - Freehold
COUNCIL TAX - Solihull Metropolitan Borough Council - B
BROADBAND - Upload Max 1000Mbps Download Max 1800Mbps
MOBILE SERVICES - EE - 87%, 3 - 82%, Vodafone - 82%, 02 - 80%
EPC - D - 64
PARKING - For at least 3 Cars
FLOODRISK - Very Low
SERVICES - Mains
COVENANTS - N/A

Are you an investor interested in expanding your portfolio?

Call 0121 775 0101 to provide your investment criteria for alerts.



SCAN TO VIEW OUR WEEKLY FILMS & SUBSCRIBE

Sneak Peeks

Every week, we unveil "Sneak Peeks," a feature showcasing exclusive properties before they hit Rightmove and other platforms.

The Landlord Club

Join our Landlord Club for weekly updates on legislation, market trends, and our Letting Director's 'Investment Pick of the Week' for optimal ROI.

HTSPMD

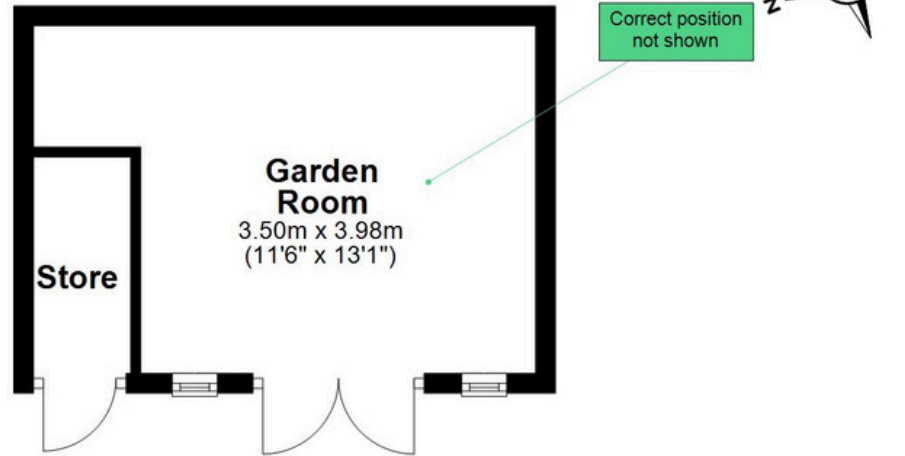
Tune into 'How's The Solihull Property Market Dom' weekly for a quick, insightful snapshot of the market.

The Mortgage Update

Get weekly insights and the best deals with our Mortgage Update, your shortcut to navigating the complex mortgage landscape confidently.

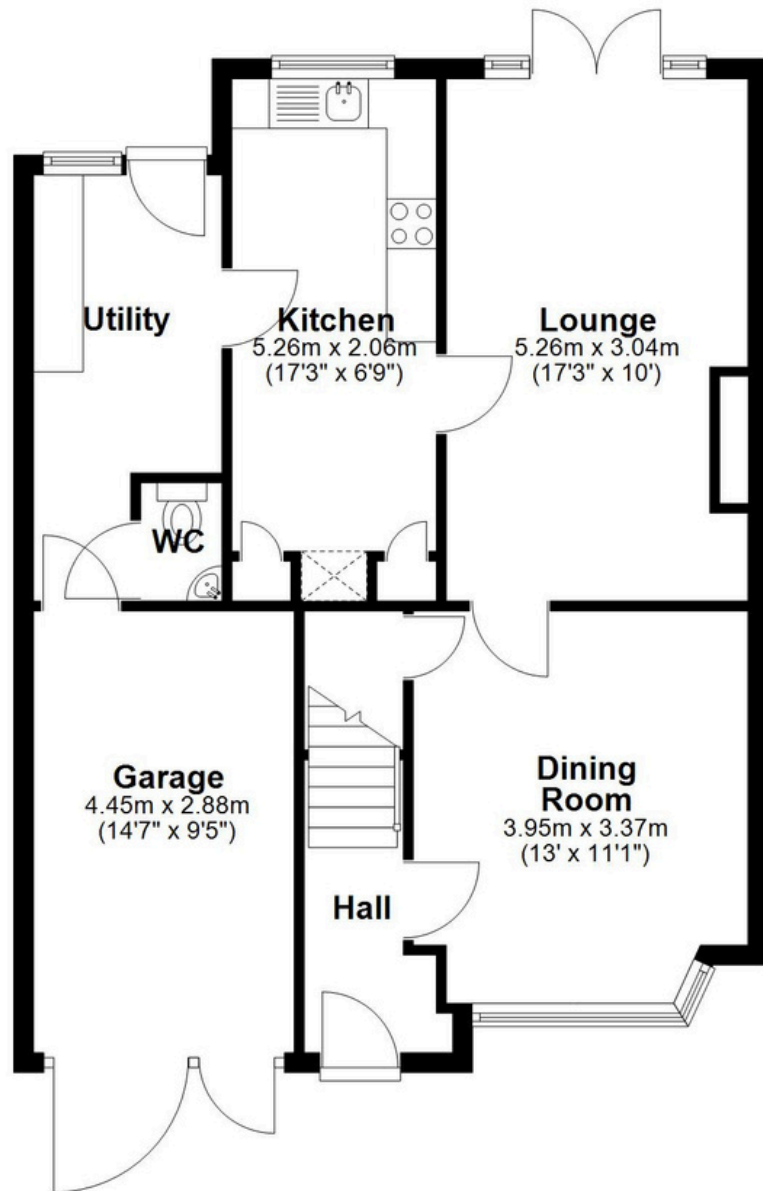
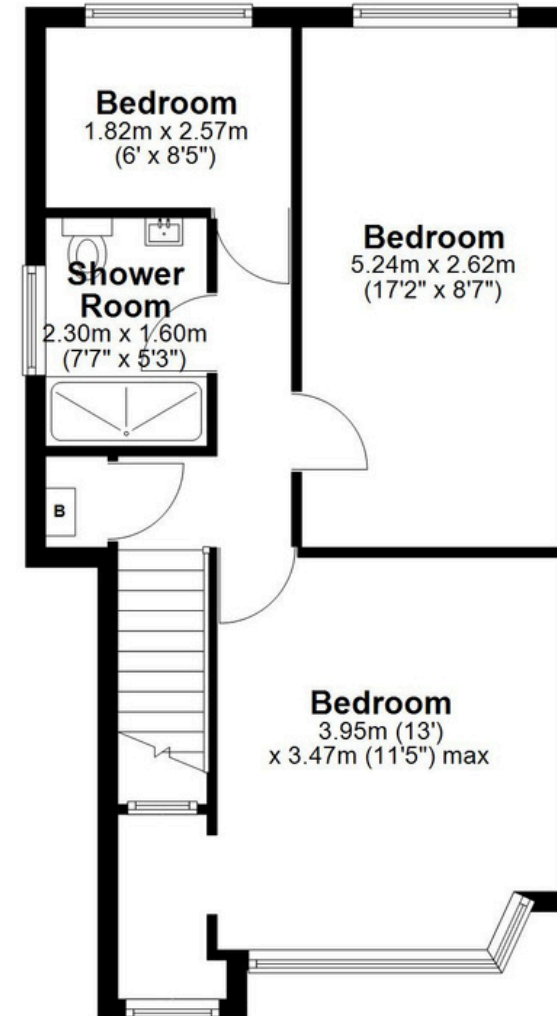
Ground Floor

Main area: approx. 68.2 sq. metres (734.1 sq. feet)
Plus garden room and store, approx. 17.7 sq. metres (190.6 sq. feet)



First Floor

Approx. 45.5 sq. metres (489.7 sq. feet)



Main area: Approx. 113.7 sq. metres (1223.8 sq. feet)

Plus garden room and store, approx. 17.7 sq. metres (190.6 sq. feet)

This floor plan is for illustration purposes only, this is not intended to be a measured/scaled survey or comply with RICS guidelines. All measurements (including total floor area) openings, orientation and floor area are approximate. No details are guaranteed, they cannot be relied upon for any purpose and do not form part of any agreement. A party must rely upon its own inspection(s). No responsibility is taken for any error, omission, or mis-statement.

Plan produced using PlanUp.