

**Need a Mortgage in principle to make offers?** Call us now for quick assistance!  
**0121 775 0101**



**Do you need to sell? Start your journey now!** Call us we can help.  
**01564 777 314**



## 66 Aylesbury Road

Hockley Heath, B94 6PJ



**SCAN FOR MORE INFO**  
**SIZE** - 2105 Sq Ft  
**TENURE** - Freehold  
**COUNCIL TAX** - Solihull Metropolitan Borough Council - F  
**BROADBAND** - Upload Max 220Mbps Download Max 1800Mbps  
**MOBILE** - 02 - 78%, EE - 76%, Vodafone - 75%, 3 - 73%  
**EPC** - C - 73  
**PARKING** - Gated Driveway Parking  
**FLOODRISK** - Very Low  
**SERVICES** - Mains  
**COVENANTS** - N/A

This stunning detached family home, located on Aylesbury Road in the village of Hockley Heath combines modern living with the peaceful charm of the countryside. Boasting over 2,000 square feet of space, the property is set behind secure electric gates and backs onto scenic greenbelt land.

### FEATURES

- Spacious Detached Family Home
- Versatile Front Reception Room
- Stunning Open Plan Kitchen/Living/Dining Room
- Separate Utility Room Plus Useful Side Veranda
- Three Good Sized Double Bedrooms with Fitted Wardrobes
- Large, Private Landscaped Rear Garden
- Gated Driveway Parking
- Walking Distance to Hockley Heath Village Centre
- Tudor Grange Academy Catchment

**Are you an investor interested in expanding your portfolio?**

**Call 01564 777 314 to provide your investment criteria for alerts.**



SCAN TO VIEW OUR WEEKLY FILMS & SUBSCRIBE



### Sneak Peeks

Every week, we unveil "Sneak Peeks," a feature showcasing exclusive properties before they hit Rightmove and other platforms.



### The Landlord Club

Join our Landlord Club for weekly updates on legislation, market trends, and our Letting Director's 'Investment Pick of the Week' for optimal ROI.



### HTSPMD

Tune into 'How's The Solihull Property Market Dom' weekly for a quick, insightful snapshot of the market.

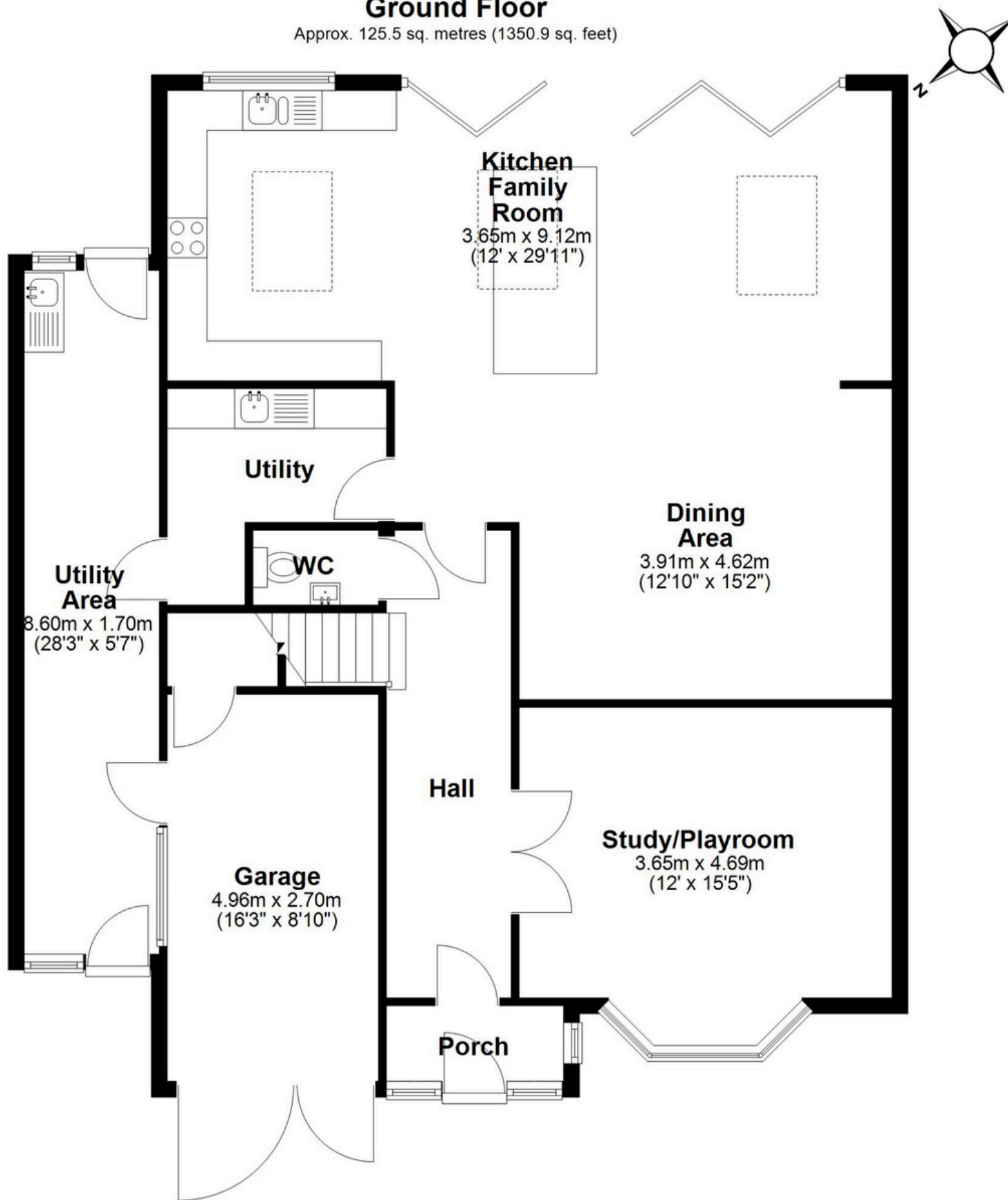


### The Mortgage Update

Get weekly insights and the best deals with our Mortgage Update, your shortcut to navigating the complex mortgage landscape confidently.

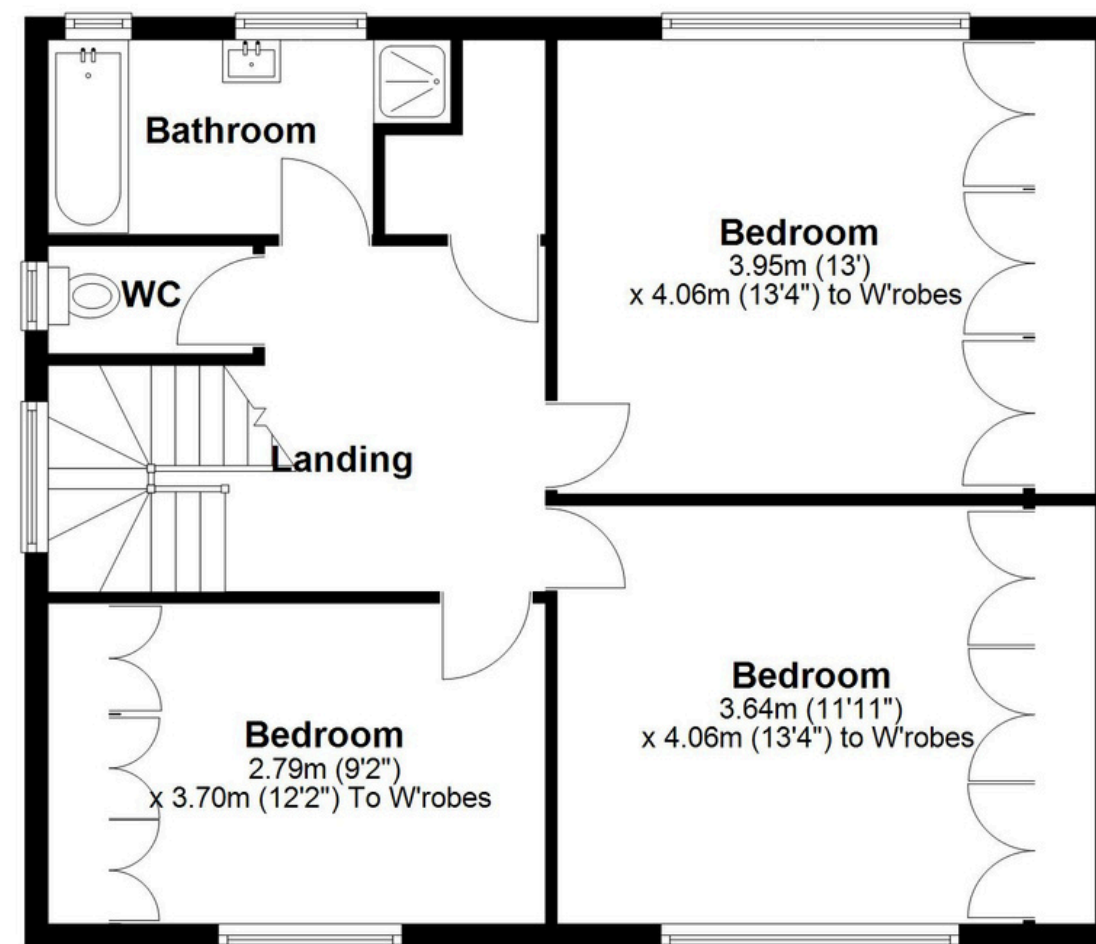
### Ground Floor

Approx. 125.5 sq. metres (1350.9 sq. feet)



### First Floor

Approx. 70.1 sq. metres (755.0 sq. feet)



Total area: approx. 195.6 sq. metres (2105.9 sq. feet)

This floor plan is for illustration purposes only, this is not intended to be a measured/scaled survey or comply with RICS guidelines. All measurements (including total floor area) openings, orientation and floor area are approximate. No details are guaranteed, they cannot be relied upon for any purpose and do not form part of any agreement. A party must rely upon its own inspection(s). No responsibility is taken for any error, omission, or mis-statement.

Plan produced using PlanUp.