



## Russells Close, East Preston, BN16

Freehold

Loft conversion creating additional first floor accommodation, adding flexibility to the layout and making the property feel more spacious overall. • Attractive rear garden with a combination of patio, planting and seating areas designed to be both practical and enjoyable year-round. • Two bathroom facilities split across both floors, helping the property work comfortably for visiting family or guests. • Positioned within a well-regarded East Preston location, convenient for the village, local shops and nearby transport links. • Offered for sale with no onward chain, providing buyers with the opportunity to move at a pace that suits them.

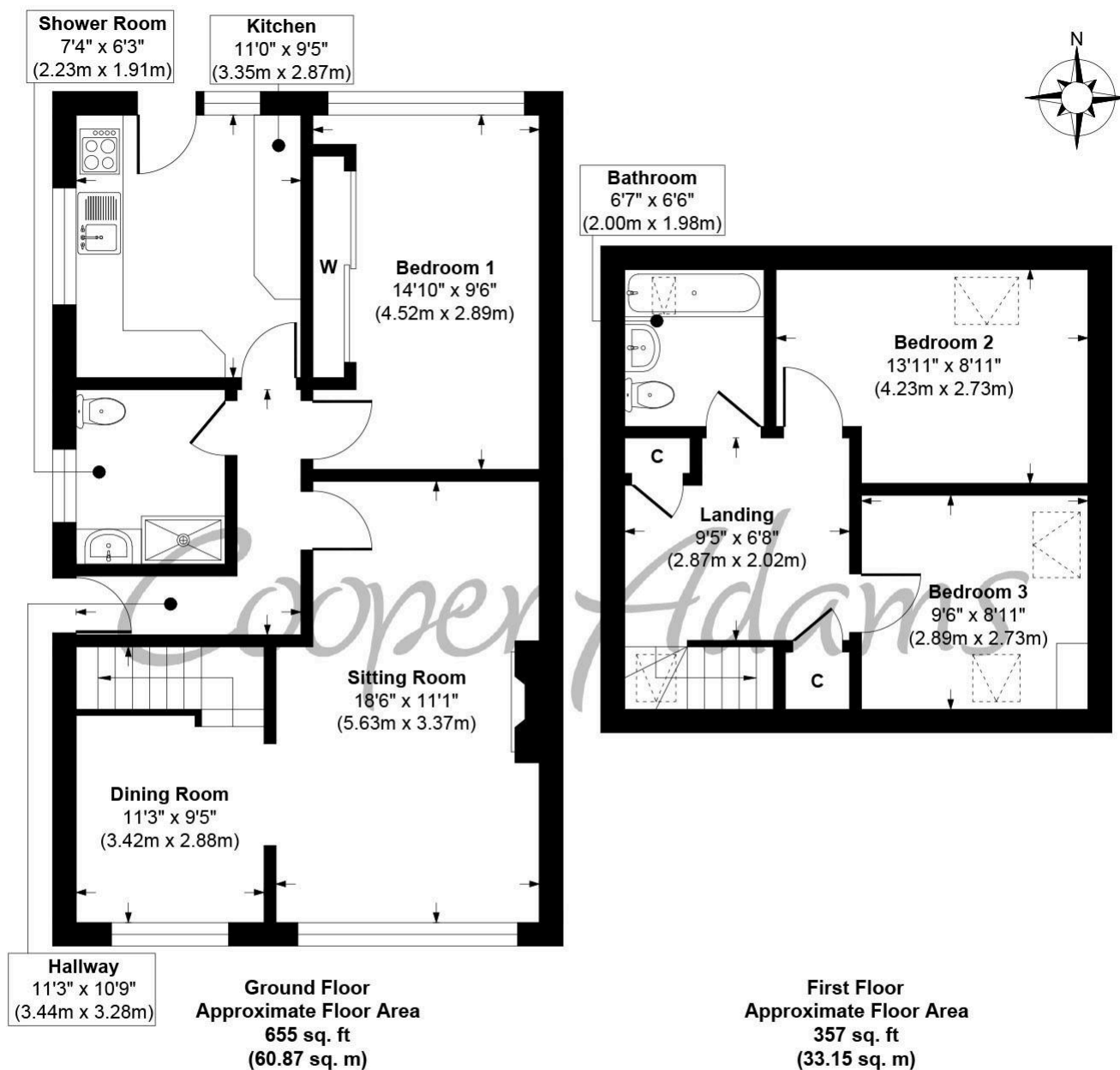
*Cooper Adams*

Offered for sale with no onward chain, this three bedroom semi-detached chalet style property is situated within a popular East Preston location and offers versatile accommodation arranged over two floors. The property has been extended into the loft, creating additional first floor space whilst still retaining a practical ground floor layout. The accommodation includes a sitting room, fitted kitchen and flexible bedroom space which could suit those looking to downsize or buyers needing room for visiting family, hobbies or home working. The layout is complemented by a ground floor shower room and an additional first floor bathroom. Externally, the property enjoys attractive and low-maintenance front and rear gardens, with the rear garden offering a good degree of privacy along with a useful summer house/store. The property is approached via a private driveway providing off road parking and is situated within easy reach of East Preston village, local shops, amenities and transport links.



East Preston, a charming seaside village in West Sussex, offers a strong sense of community with shops, restaurants, schools, and leisure clubs nearby. Its peaceful pebble shoreline is perfect for relaxing walks. Ideally located near the South Downs, it combines the best of country and seaside living.





**Russells Close, East Preston, BN16 1BT**  
**Approx. Gross Internal Floor Area 1012 sq. ft / 94.02 sq. m**

Illustration for identification purposes only, measurements are approximate, not to scale

Copyright © Cooper Adams



Material Information includes important facts that may affect a buyer's decision to view or buy, such as tenure, restrictions, utilities, construction, and other key details. Full information for this property is available at [www.cooper-adams.com](http://www.cooper-adams.com). We may offer buyer services and receive referral benefits - details on request. All content is copyright Cooper Adams. Details and floor plans are for guidance only and don't form part of any contract. Measurements are maximums including bays and alcoves. Floor plan sizes are approximate. Images, maps and plans are not to scale. Appliances/services not tested. Cooper Adams Estates Ltd, Bishopstone. Reg No: 07127482. VAT No: 982847172.

Lettings | Sales | Free valuations | Land & New Homes | Mortgages

FULL DETAILS OF THE MATERIAL INFORMATION ARE ON OUR WEBSITE - VIEWING STRICTLY BY APPOINTMENT WITH COOPER ADAMS

FOR MORE PHOTOS AND TO BOOK A VIEWING VISIT OUR WEBSITE - Tel: 01903 791 792 - [www.cooper-adams.com](http://www.cooper-adams.com)