

PEAK LANE, KINGSTON, EAST PRESTON



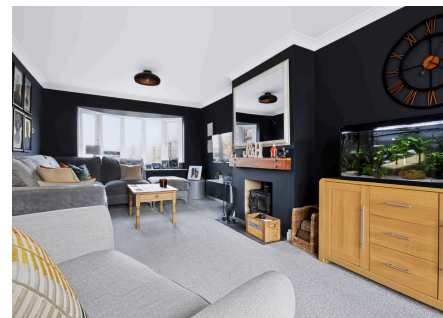
Gorse View, Peak Lane, East Preston

Freehold

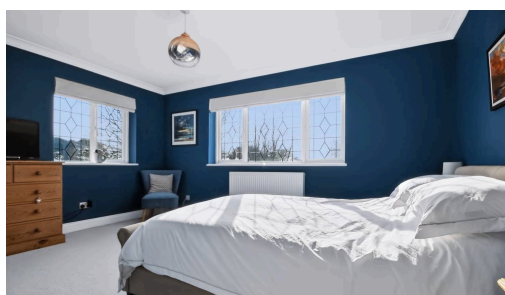
Located on a private lane within the Kingston Gorse Private Estate. • Open green field views to both the front and rear aspects. • Large west-facing rear garden. • A short walk from the beach and Greensward. • Four bedrooms, including a principal suite with two en-suite facilities. • Kitchen/dining/family room, separate sitting room, garden room and study.

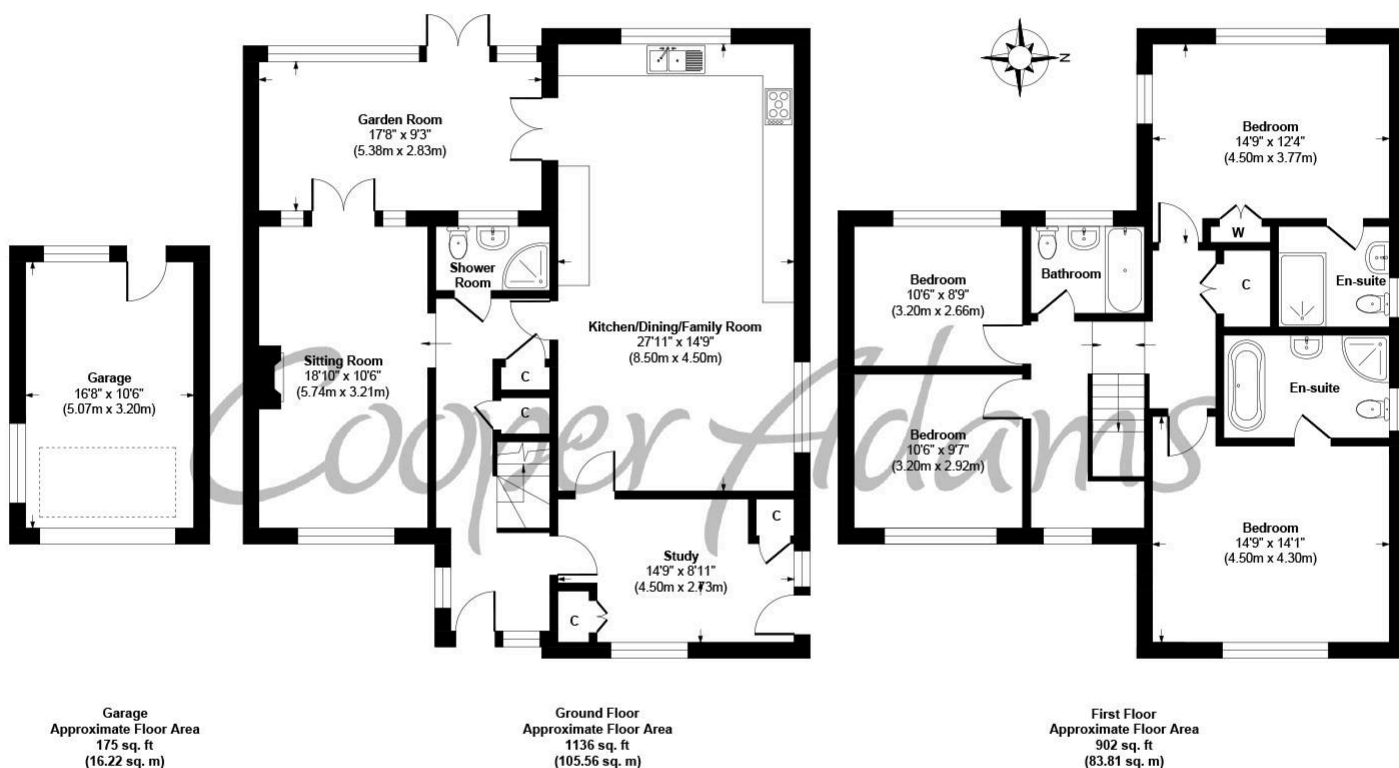
Cooper Adams

Situated along a picturesque private lane in the highly sought-after Kingston Gorse area, this substantial semi-detached home enjoys open fields to the front and Kingston Park to the rear, with the beach and Greensward just a short walk away. The accommodation centres around a spacious kitchen/dining/family room overlooking the west-facing garden, complemented by a separate sitting room, garden room, study, entrance hall, and ground floor shower room. Upstairs are four bedrooms, including a principal bedroom with en-suite, a guest bedroom with en-suite shower room, plus a family bathroom. Outside, automated gates provide parking for four cars and access to a detached garage with a boarded loft for excellent storage. The private west-facing garden is mainly laid to lawn with mature planting and seating areas, enjoying a pleasant outlook across Kingston Park. Combining a private setting, coastal location, and attractive views, this is a rare opportunity to acquire a home in one of the area's most desirable locations.



East Preston, a charming seaside village in West Sussex, offers a strong sense of community with shops, restaurants, schools, and leisure clubs nearby. Its peaceful pebble shoreline is perfect for relaxing walks. Ideally located near the South Downs, it combines the best of country and seaside living.





Gorse View, Peak Lane, East Preston, BN16 1RW
Approx. Gross Internal Floor Area 2213 sq. ft / 205.59 sq. m

Illustration for identification purposes only, measurements are approximate, not to scale

Copyright © Cooper Adams



Material Information includes important facts that may affect a buyer's decision to view or buy, such as tenure, restrictions, utilities, construction, and other key details. Full information for this property is available at www.cooper-adams.com. We may offer buyer services and receive referral benefits - details on request. All content is copyright Cooper Adams. Details and floor plans are for guidance only and don't form part of any contract. Measurements are maximums including bays and alcoves. Floor plan sizes are approximate. Images, maps and plans are not to scale. Appliances/services not tested. Cooper Adams Estates Ltd, Bishopstone, Reg No: 07127482. VAT No: 982847172.

Lettings | Sales | Free valuations | Land & New Homes | Mortgages

FULL DETAILS OF THE MATERIAL INFORMATION ARE ON OUR WEBSITE - VIEWING STRICTLY BY APPOINTMENT WITH COOPER ADAMS

FOR MORE PHOTOS AND TO BOOK A VIEWING VISIT OUR WEBSITE - Tel: 01903 791 792 - www.cooper-adams.com