



Seawaves Close, East Preston

Freehold

Beautifully presented link-detached bungalow. • Tucked away in a quiet and highly sought-after cul-de-sac. • Two generous double bedrooms. • Garage with driveway providing off-road parking. • Well maintained private rear garden. • Ready to move straight into.

Cooper Adams

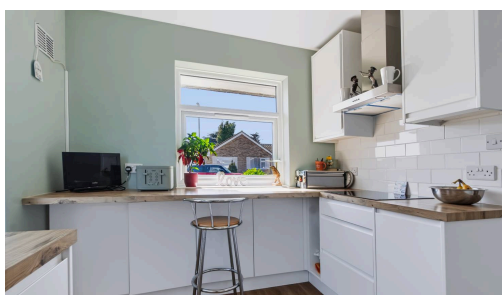
Situated in a quiet residential cul-de-sac, this link-detached bungalow has been updated to provide well-maintained, single-storey accommodation. The property includes a spacious sitting room, a modern fitted kitchen, two well-proportioned bedrooms and a contemporary bathroom. To the front, there is a lawned garden with an established shrub border, together with a driveway providing off-road parking for at least two vehicles and access to the garage. The east-facing rear garden is enclosed and has been landscaped with areas of lawn and planting. A range of local shops and everyday amenities are approximately an eight-minute walk from the property, providing convenient access without compromising the quiet residential setting. The combination of its practical layout, outside space and accessible location makes it suitable for a variety of buyers.

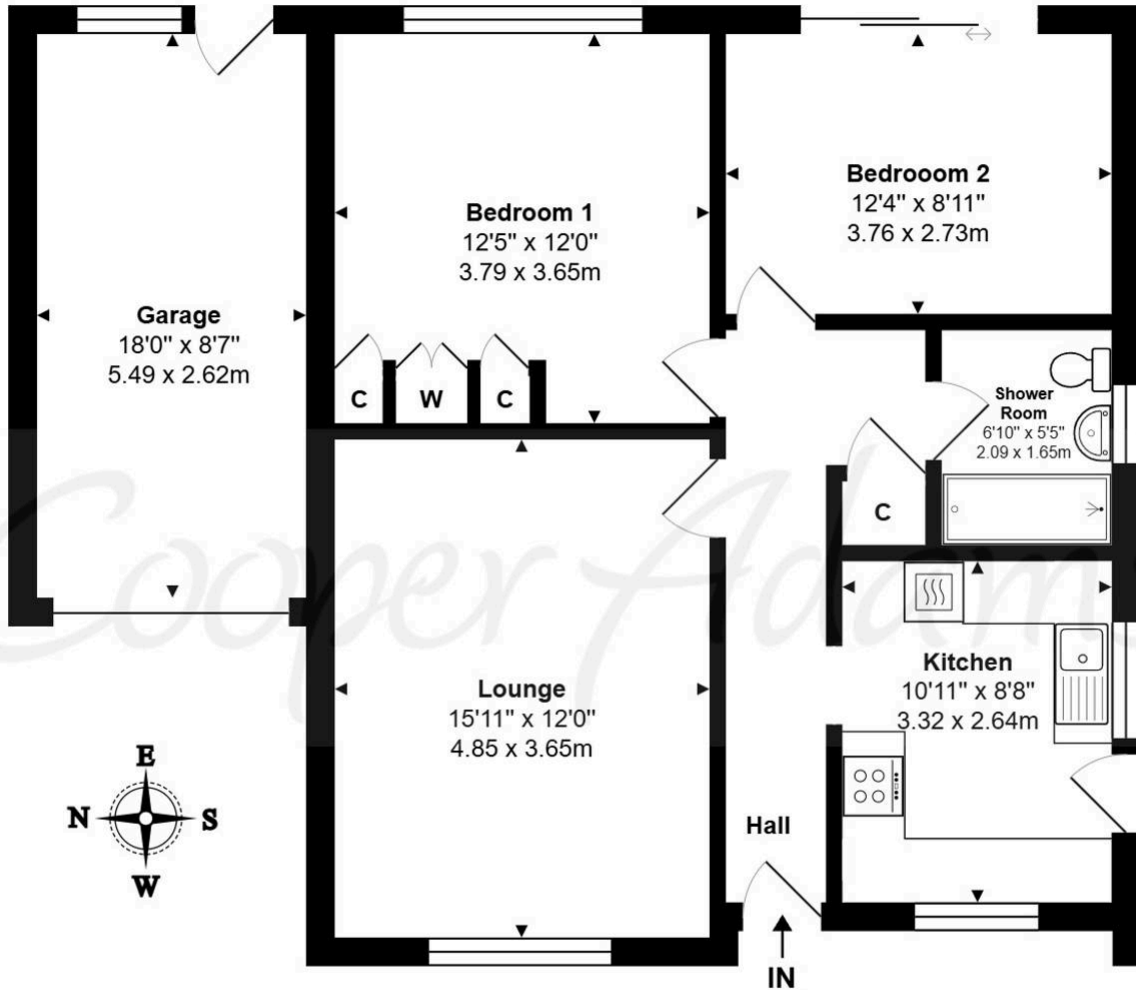
This property is "Legally Prepared." Cooper Adams has gathered key documents, including the title, plans, property forms, warranties, and EPC. Buyers must request these before offering.

The seller requires a 'Reservation Agreement' to protect serious buyers as they



East Preston, a charming seaside village in West Sussex, offers a strong sense of community with shops, restaurants, schools, and leisure clubs nearby. Its peaceful pebble shoreline is perfect for relaxing walks. Ideally located near the South Downs, it combines the best of country and seaside living.





Seawaves Close, East Preston, BN16 1LQ

Total Area: 874 ft² ... 81.2 m² (Includes Garage)

Whilst every attempt has been made to ensure the accuracy of the floor plan contained here, measurements are approximate and no responsibility is taken for error, omission or mis-statement.

This plan is for illustrative purposes only and should be used as such by any prospective purchaser.

Created by 1st Image 2026



You can include any text here. The text can be modified upon generating your brochure.

Material Information includes important facts that may affect a buyer's decision to view or buy, such as tenure, restrictions, utilities, construction, and other key details. Full information for this property is available at www.cooper-adams.com. We may offer buyer services and receive referral benefits - details on request. All content is copyright Cooper Adams. Details and floor plans are for guidance only and don't form part of any contract. Measurements are maximums including bays and alcoves. Floor plan sizes are approximate. Images, maps and plans are not to scale. Appliances/services not tested. Cooper Adams Estates Ltd, Bishopstone. Reg No: 07127482. VAT No: 982847172.

Lettings | Sales | Free valuations | Land & New Homes | Mortgages

FULL DETAILS OF THE MATERIAL INFORMATION ARE ON OUR WEBSITE - VIEWING STRICTLY BY APPOINTMENT WITH COOPER ADAMS

FOR MORE PHOTOS AND TO BOOK A VIEWING VISIT OUR WEBSITE - Tel: 01903 791 792 - www.cooper-adams.com