



## Ashleigh Close, Angmering, BN16 4BX

Freehold

Delightful two double bedroom semi-detached bungalow • Located in a quiet cul-de-sac • Low maintenance garden • Driveway and garage • Generous corner plot • Walking distance to shops, cafés, schools and amenities • For more information visit the [Cooper Adams website](#)

*Cooper Adams*



This charming and well-presented two double bedroom semi-detached bungalow offers relaxed and comfortable living, ideal for those looking to retire, downsize or enjoy single-level accommodation. A welcoming entrance hall leads through to a bright and spacious sitting/dining room, perfect for everyday living and entertaining, alongside a well-appointed kitchen, bathroom and two double bedrooms. The property is maintained in good order throughout and occupies a generous plot, with a low-maintenance garden ideal for enjoying outdoor time without the upkeep. Additional benefits include a single garage and driveway providing off-road parking for two vehicles. Peacefully tucked away in a highly sought-after cul-de-sac, the bungalow enjoys a convenient yet tranquil setting within easy walking distance of shops, cafés, schools and local amenities.

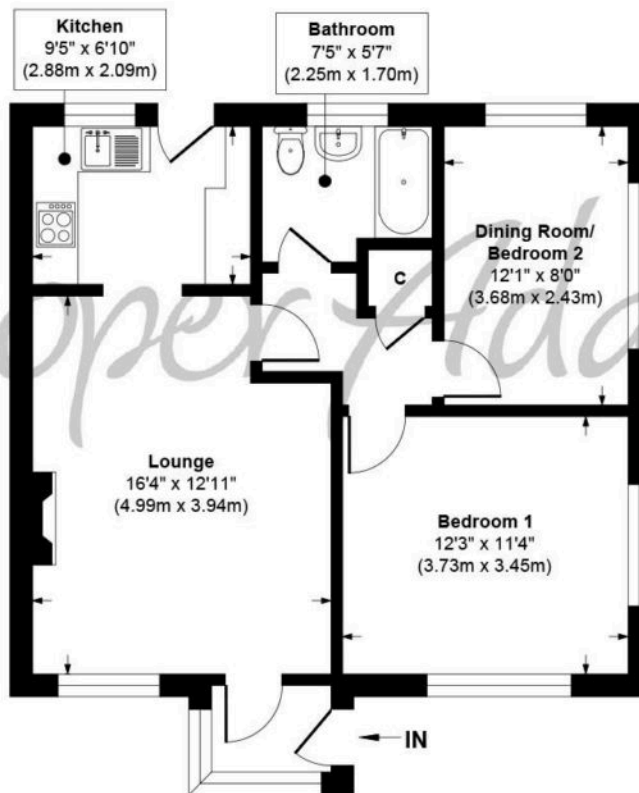
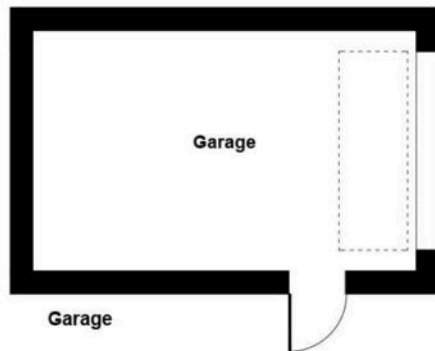
This property is "Legally Prepared." Cooper Adams has gathered key documents, including the title, plans, property forms, warranties, and EPC. Buyers must request these before offering.



Angmering, a charming village near the South Downs, offers shops, schools, a health club, and a golf course. Beaches are within 2 miles, and nearby shopping is available in Rustington and Worthing. Angmering station connects to London, Brighton, and more, with Gatwick 40 miles away and easy access to the A27 and A24 roads.



*Cooper Adams*



Approximate Floor Area  
634 sq. ft  
(58.87 sq. m)

**Approx. Gross Internal Floor Area 634 sq. ft / 58.87 sq. m**

Illustration for identification purposes only, measurements are approximate, not to scale

Copyright © Cooper Adams



Material Information includes important facts that may affect a buyer's decision to view or buy, such as tenure, restrictions, utilities, construction, and other key details. Full information for this property is available at [www.cooper-adams.com](http://www.cooper-adams.com). We may offer buyer services and receive referral benefits – details on request. All content is copyright Cooper Adams. Details and floor plans are for guidance only and don't form part of any contract. Measurements are maximums including bays and alcoves. Floor plan sizes are approximate. Images, maps and plans are not to scale. Appliances/services not tested. Cooper Adams Estates Ltd, Bishopstone. Reg No: 07127482. VAT No: 982847172.

Lettings | Sales | Free valuations | Land & New Homes | Mortgages

FULL DETAILS OF THE MATERIAL INFORMATION ARE ON OUR WEBSITE - VIEWING STRICTLY BY APPOINTMENT WITH COOPER ADAMS

FOR MORE PHOTOS AND TO BOOK A VIEWING VISIT OUR WEBSITE - Tel: 01903 791 792 - [www.cooper-adams.com](http://www.cooper-adams.com)