



## Greenacres Ring, Angmering, BN16 4BU

Freehold

Two bedroom semi-detached bungalow • Two double bedrooms • West facing garden • Garage and parking for two cars •  
Five minutes walk to Angmering's village shops, pubs and cafes • For more information visit the Cooper Adams website

*Cooper Adams*

Set in the popular village of Angmering, this bungalow is well placed for easy access to the A27, Littlehampton and Brighton, while still being just a short five-minute walk from the village shops, cafés and pubs.

Inside, a central hallway with a handy coat cupboard leads through to the living room, which features a fireplace and laminate flooring. The kitchen is modern and well laid out, with granite worktops, a double oven and hob. There's also space for a washing machine in the hallway cupboard.

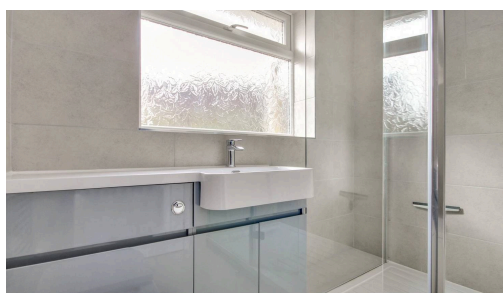
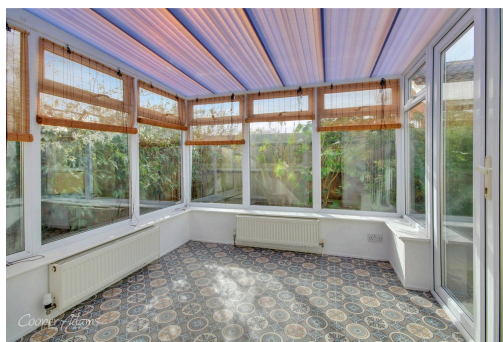
From the kitchen, a heated conservatory provides a flexible space for dining, with room for a table and direct access out to the west-facing, low-maintenance rear garden.

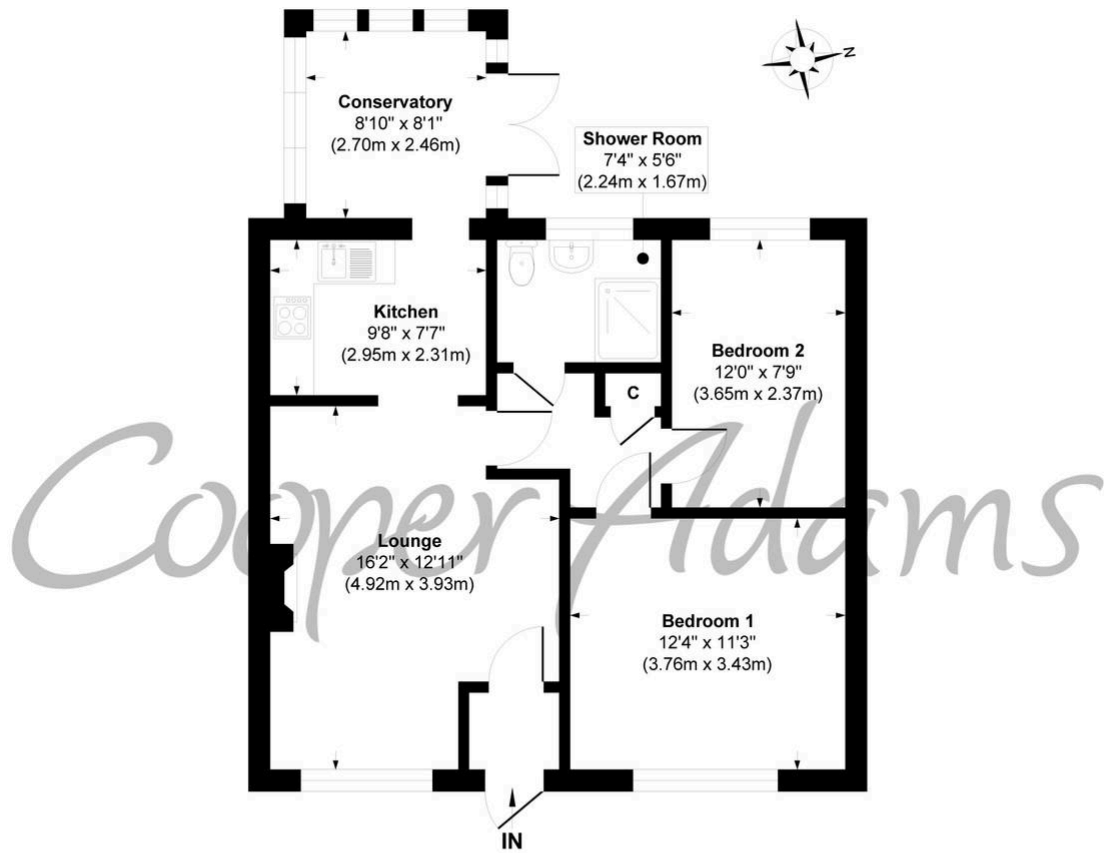
There are two good-sized double bedrooms, along with a modern shower room. Outside, the property has a generous wraparound front garden, a garage with electrics, and a private driveway with space for two cars.



Angmering, a charming village near the South Downs, offers shops, schools, a health club, and a golf course. Beaches are within 2 miles, and nearby shopping is available in Rustington and Worthing. Angmering station connects to London, Brighton, and more, with Gatwick 40 miles away and easy access to the A27 and A24 roads.

This property is "Legally Prepared." Cooper Adams has gathered key documents, including the title, plans, property forms, warranties, and EPC. Buyers must request these before offering.





Approximate Floor Area  
687 sq. ft  
(63.83 sq. m)

**18 Greenacres Ring**

**Approx. Gross Internal Floor Area 687 sq. ft / 63.83 sq. m**

Illustration for identification purposes only, measurements are approximate, not to scale

Copyright © Cooper Adams



Material Information includes important facts that may affect a buyer's decision to view or buy, such as tenure, restrictions, utilities, construction, and other key details. Full information for this property is available at [www.cooper-adams.com](http://www.cooper-adams.com). We may offer buyer services and receive referral benefits – details on request. All content is copyright Cooper Adams. Details and floor plans are for guidance only and don't form part of any contract. Measurements are maximums including bays and alcoves. Floor plan sizes are approximate. Images, maps and plans are not to scale. Appliances/services not tested. Cooper Adams Estates Ltd, Bishopstone. Reg No: 07127482. VAT No: 982847172.

Lettings | Sales | Free valuations | Land & New Homes | Mortgages

FULL DETAILS OF THE MATERIAL INFORMATION ARE ON OUR WEBSITE - VIEWING STRICTLY BY APPOINTMENT WITH COOPER ADAMS

FOR MORE PHOTOS AND TO BOOK A VIEWING VISIT OUR WEBSITE - Tel: 01903 791 792 - [www.cooper-adams.com](http://www.cooper-adams.com)