

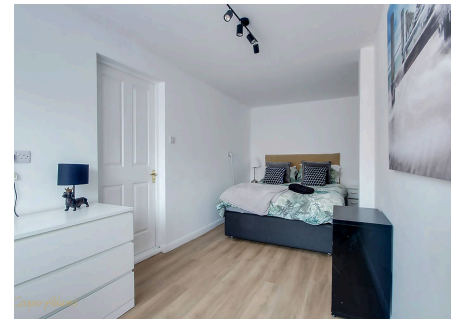
Norfolk Road, Littlehampton, BN17 5HE

Freehold

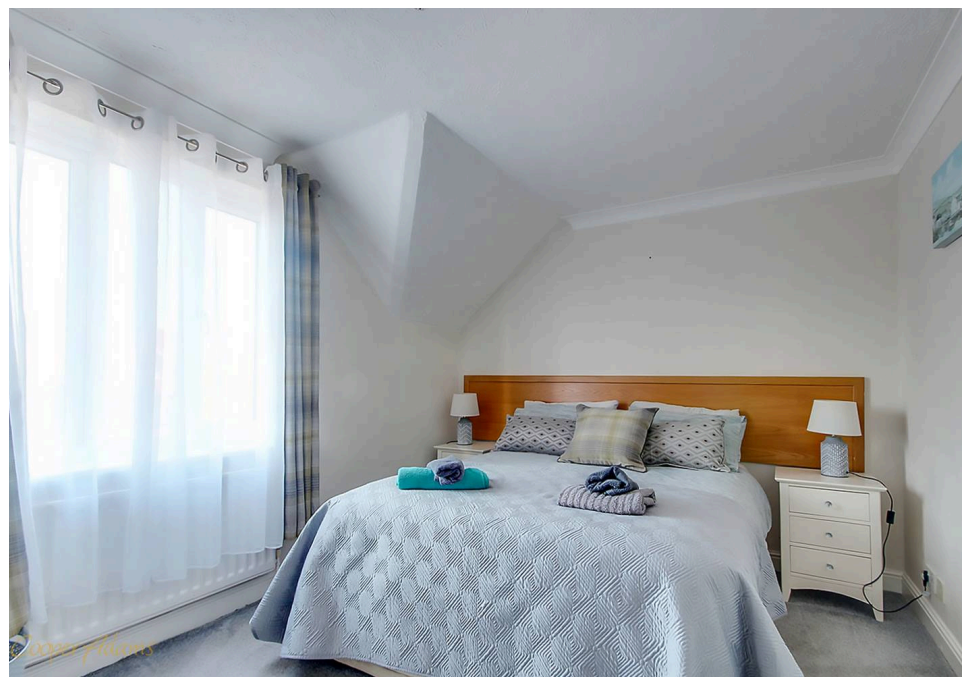
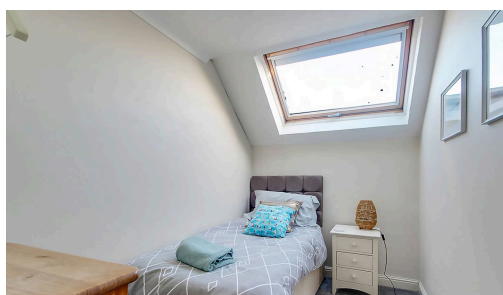
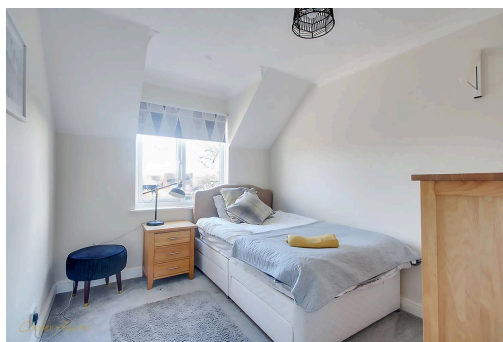
Five Bedrooms • A Mid Terrace Three-Storey Townhouse • No Onward Chain • En-Suite to Primary Bedroom • Modernised Throughout • Driveway & Converted Garage • West Facing Juliette Balcony • Low maintenance Rear Garden • Within Walking Distance to Littlehampton Beach • Approx. 1323 sq. ft (122.8 sq. m)

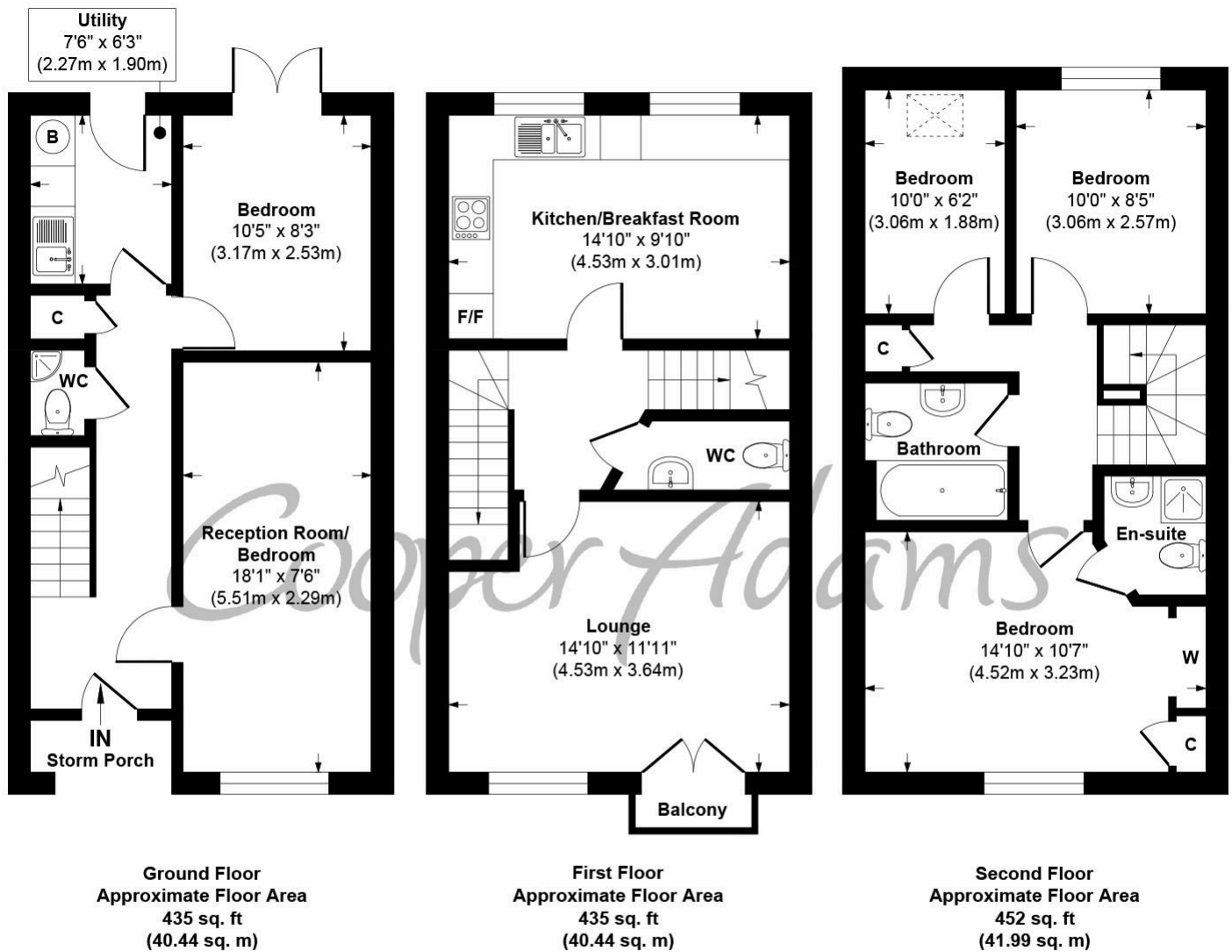
Cooper Adams

A modernised and well-presented five-bedroom terraced three-storey townhouse, ideally located within walking distance of Littlehampton Beach and local amenities. The property offers versatile accommodation arranged over three floors, including a contemporary kitchen/breakfast room, a bright and comfortable lounge with access to a west-facing Juliette balcony, and five well-proportioned bedrooms, with the primary bedroom benefiting from an en-suite. Further features include a converted garage, two bathrooms and two cloakrooms, a separate utility room, a private driveway providing off-road parking, and a low-maintenance rear garden ideal for easy upkeep and outdoor enjoyment. The property also benefits from an efficient boiler and heating system. Finished to a modern standard, this home is well suited to families, professionals, or those seeking a coastal lifestyle.



Littlehampton, a vibrant seaside town at the mouth of the River Arun, offers great shopping, entertainment, and day-to-day amenities. With two award-winning beaches, scenic river views, and captivating architecture like the Stage by the Sea, it's a popular destination for all. Leisure options include golf, cycling, and the Littlehampton WAVE Swimming and Sports Centre for indoor fun.





Norfolk Road, Littlehampton
Approx. Gross Internal Floor Area 1323 sq. ft / 122.87 sq. m

Illustration for identification purposes only, measurements are approximate, not to scale

Copyright © Cooper Adams

Council Tax band: D, EPC Energy Efficiency Rating: D, EPC Environmental Impact Rating: D

Material Information includes important facts that may affect a buyer's decision to view or buy, such as tenure, restrictions, utilities, construction, and other key details. Full information for this property is available at www.cooper-adams.com. We may offer buyer services and receive referral benefits – details on request. All content is copyright Cooper Adams. Details and floor plans are for guidance only and don't form part of any contract. Measurements are maximums including bays and alcoves. Floor plan sizes are approximate. Images, maps and plans are not to scale. Appliances/services not tested. Cooper Adams Estates Ltd, Bishopstone. Reg No: 07127482. VAT No: 982847172.

Lettings | Sales | Free valuations | Land & New Homes | Mortgages

FULL DETAILS OF THE MATERIAL INFORMATION ARE ON OUR WEBSITE - VIEWING STRICTLY BY APPOINTMENT WITH COOPER ADAMS

FOR MORE PHOTOS AND TO BOOK A VIEWING VISIT OUR WEBSITE - Tel: 01903 791 792 - www.cooper-adams.com