



Buckingham Place, Rustington, BN16 3US

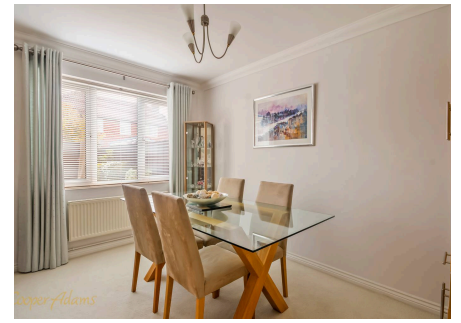
Freehold

Four Bedrooms with Built-In Wardrobes • Detached Family Home • South-Facing Rear Garden • No Onward Chain • Separate Study • Open-Plan Lounge/Diner • Garage with Electric Door • Conservatory • Approx. 1527 sq. ft (141.9 sq. m)

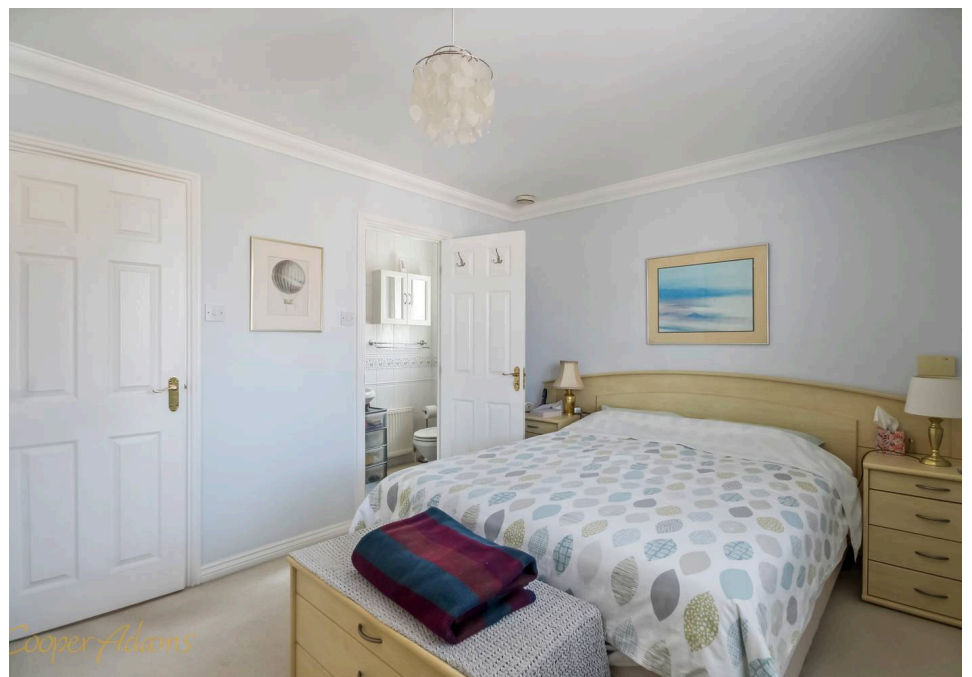
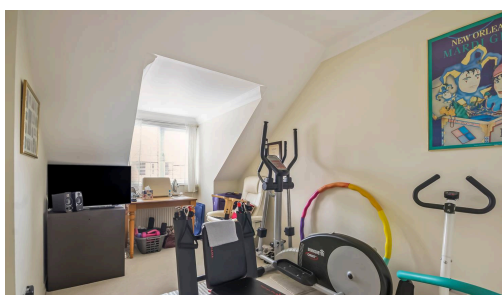
Cooper Adams

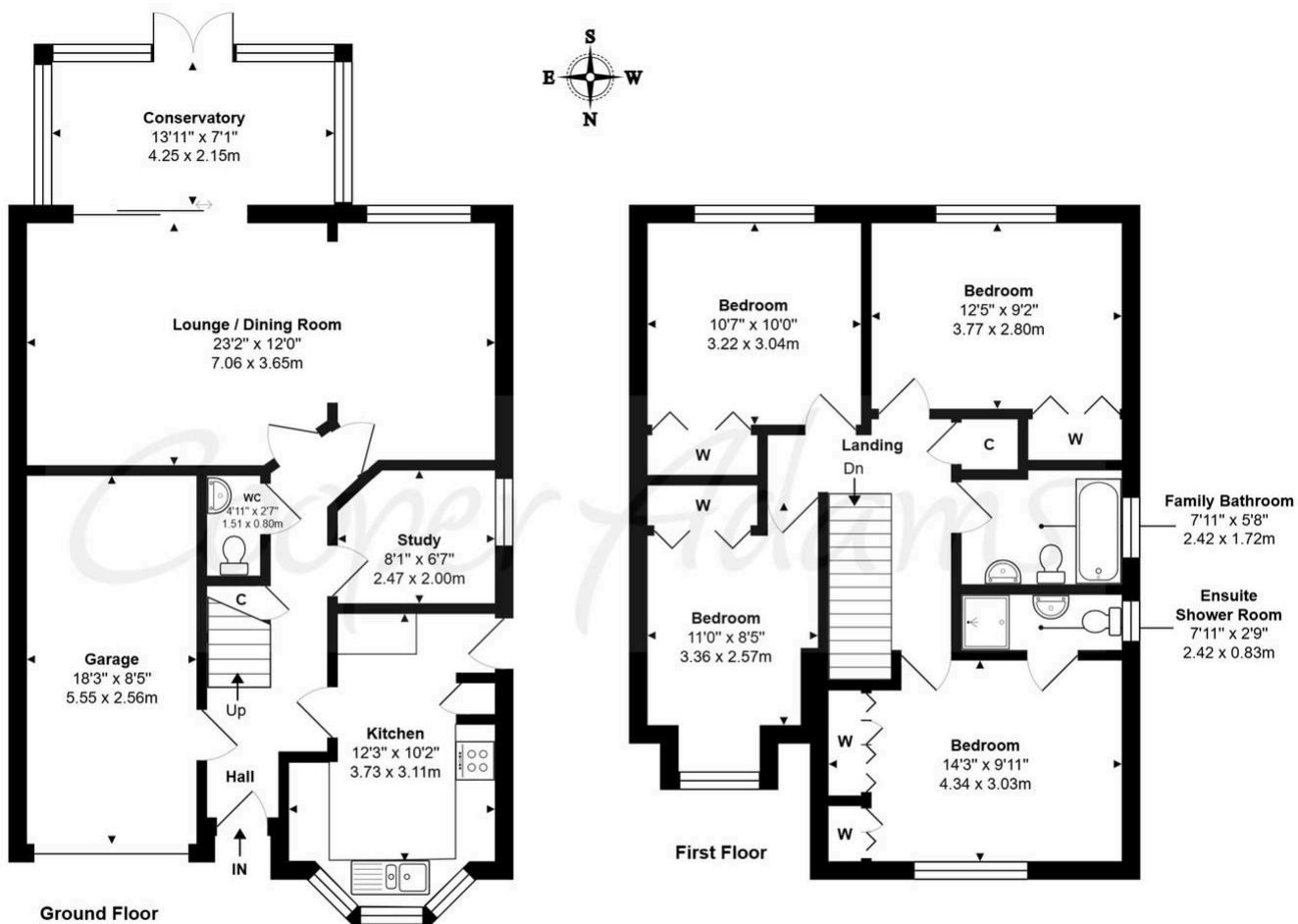
This detached four-bedroom family home is located in the Parklands Estate, with Summerlea Primary School just across the road. The kitchen sits at the front of the property and includes an integrated fridge freezer, oven and hob, a bay window, lots of cupboards for storage and worktop space. To the rear, the lounge with feature gas fire opens into the dining area, forming one continuous space that leads into the conservatory and out to the south-facing garden. On the ground floor, there is also a separate study and cloakroom for convenience. Upstairs, all four bedrooms include built-in wardrobes, so there's no need to sacrifice floor space for storage. The primary bedroom has its own en-suite, while the remaining bedrooms are served by a separate family bathroom. Outside, there's a driveway and a garage fitted with an electric door, and the property is being sold with no onward chain.

The seller requires a 'Reservation Agreement' to protect serious buyers as they proceed to exchange of contracts.



Littlehampton, a vibrant seaside town at the mouth of the River Arun, offers great shopping, entertainment, and day-to-day amenities. With two award-winning beaches, scenic river views, and captivating architecture like the Stage by the Sea, it's a popular destination for all. Leisure options include golf, cycling, and the Littlehampton WAVE Swimming and Sports Centre for indoor fun.





Buckingham Place, Rustington, BN16 3US

Total Area: 1527 ft² ... 141.9 m² (Includes Garage)

Whilst every attempt has been made to ensure the accuracy of the floor plan contained here, measurements are approximate and no responsibility is taken for error, omission or mis-statement.
 This plan is for illustrative purposes only and should be used as such by any prospective purchaser.
 Created by 1st Image 2026

Council Tax band: F, EPC Energy Efficiency Rating: D

Material Information includes important facts that may affect a buyer's decision to view or buy, such as tenure, restrictions, utilities, construction, and other key details. Full information for this property is available at www.cooper-adams.com. We may offer buyer services and receive referral benefits - details on request. All content is copyright Cooper Adams. Details and floor plans are for guidance only and don't form part of any contract. Measurements are maximums including bays and alcoves. Floor plan sizes are approximate. Images, maps and plans are not to scale. Appliances/services not tested. Cooper Adams Estates Ltd, Bishopstone. Reg No: 07127482. VAT No: 982847172.

Lettings | Sales | Free valuations | Land & New Homes | Mortgages

FULL DETAILS OF THE MATERIAL INFORMATION ARE ON OUR WEBSITE - VIEWING STRICTLY BY APPOINTMENT WITH COOPER ADAMS

FOR MORE PHOTOS AND TO BOOK A VIEWING VISIT OUR WEBSITE - Tel: 01903 791 792 - www.cooper-adams.com