

Mill Road Avenue, Angmering, BN16 4HS

Freehold

Three bedroom detached chalet bungalow • Large driveway for at least 2 cars • Modern kitchen/breakfast room opening onto conservatory • Living room with wood burner • Main bedroom upstairs with fitted wardrobes and en-suite • Westerly facing garden

Cooper Adams

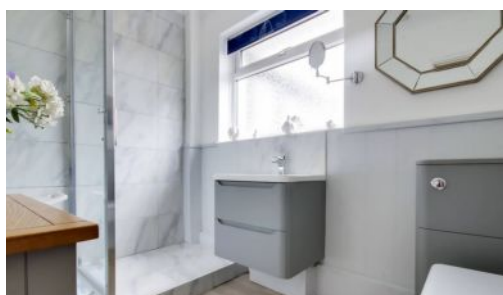
Nestled within a sought-after and tranquil location, this three-bedroom detached chalet bungalow offers a harmonious blend of modern amenities and comfortable living. Upon entering, you are welcomed into a modern kitchen/breakfast room, which benefits from a utility area and flows seamlessly into a bright conservatory, creating an ideal space for both relaxation and entertaining. The cosy living room features a wood burner, adding warmth and character to the home. Also located on the ground floor are two well-proportioned double bedrooms and a newly fitted shower room, offering flexible accommodation for family living or guests. The first floor hosts the principal bedroom, complete with fitted wardrobes and an en-suite bathroom, along with an additional loft room providing ample storage space.

Externally, the property benefits from a spacious driveway providing off-road parking for at least two vehicles, together with a westerly facing garden that enjoys plenty of natural light and offers a peaceful space to unwind.

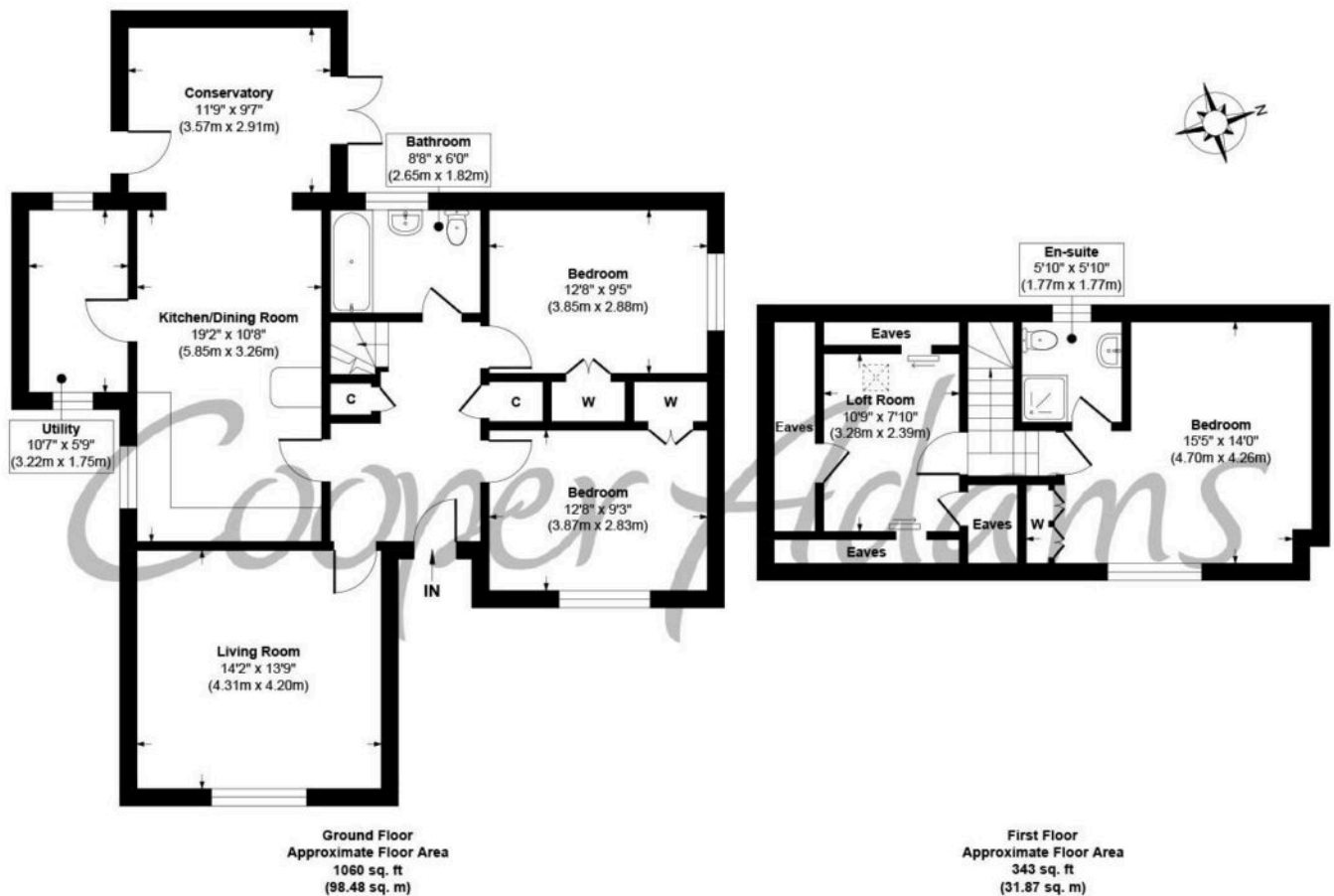


Angmering, a charming village near the South Downs, offers shops, schools, a health club, and a golf course. Beaches are within 2 miles, and nearby shopping is available in Rustington and Worthing. Angmering station connects to London, Brighton, and more, with Gatwick 40 miles away and easy access to the A27 and A24 roads.

This property is "Legally Prepared." Cooper Adams has gathered key documents, including the title, plans, property forms, warranties, and EPC. Buyers must request these before offering



Cooper Adams



Approx. Gross Internal Floor Area 1403 sq. ft / 130.35 sq. m (Excluding Eaves)

Illustration for identification purposes only, measurements are approximate, not to scale

Copyright © Cooper Adams



Material Information includes important facts that may affect a buyer's decision to view or buy, such as tenure, restrictions, utilities, construction, and other key details. Full information for this property is available at www.cooper-adams.com. We may offer buyer services and receive referral benefits – details on request. All content is copyright Cooper Adams. Details and floor plans are for guidance only and don't form part of any contract. Measurements are maximums including bays and alcoves. Floor plan sizes are approximate. Images, maps and plans are not to scale. Appliances/services not tested. Cooper Adams Estates Ltd, Bishopstone. Reg No: 07127482. VAT No: 982847172.

Lettings | Sales | Free valuations | Land & New Homes | Mortgages

FULL DETAILS OF THE MATERIAL INFORMATION ARE ON OUR WEBSITE - VIEWING STRICTLY BY APPOINTMENT WITH COOPER ADAMS

FOR MORE PHOTOS AND TO BOOK A VIEWING VISIT OUR WEBSITE - Tel: 01903 791 792 - www.cooper-adams.com