



Jackie Quinn
estate agents

28 Beaconsfield Road, Epsom

Guide Price **£350,000**

A well proportioned two bedroom ground floor maisonette with direct access to a private rear garden. The property has its own driveway and parking for several cars. Situated in the heart of Langley Vale, the property is bright and spacious throughout and available for sale with no onward chain.

Internally, the property comprises a large lounge/dining room with doors opening onto the rear garden, kitchen, bathroom and two bedrooms. An ideal first time buy or buy to let opportunity - the property could achieve a monthly rent in the region of £1,600 per calendar month.

Langley Vale has its own primary school and petrol station. Many highly regarded senior schools are within easy reach including Rosebery School for Girls in Epsom. Epsom Downs, home to the famous Epsom Derby is close by and there are many lovely walking areas and bridleways, ideal for those with a love of the outdoors.

Approximately two miles away lies Epsom town centre with its mainline station serving London Waterloo and Victoria in approximately forty minutes, together with a good range of shopping facilities. Ashted Village is also approximately two miles away and offers a wide range of independent village shops and eateries.

Council Tax band: C

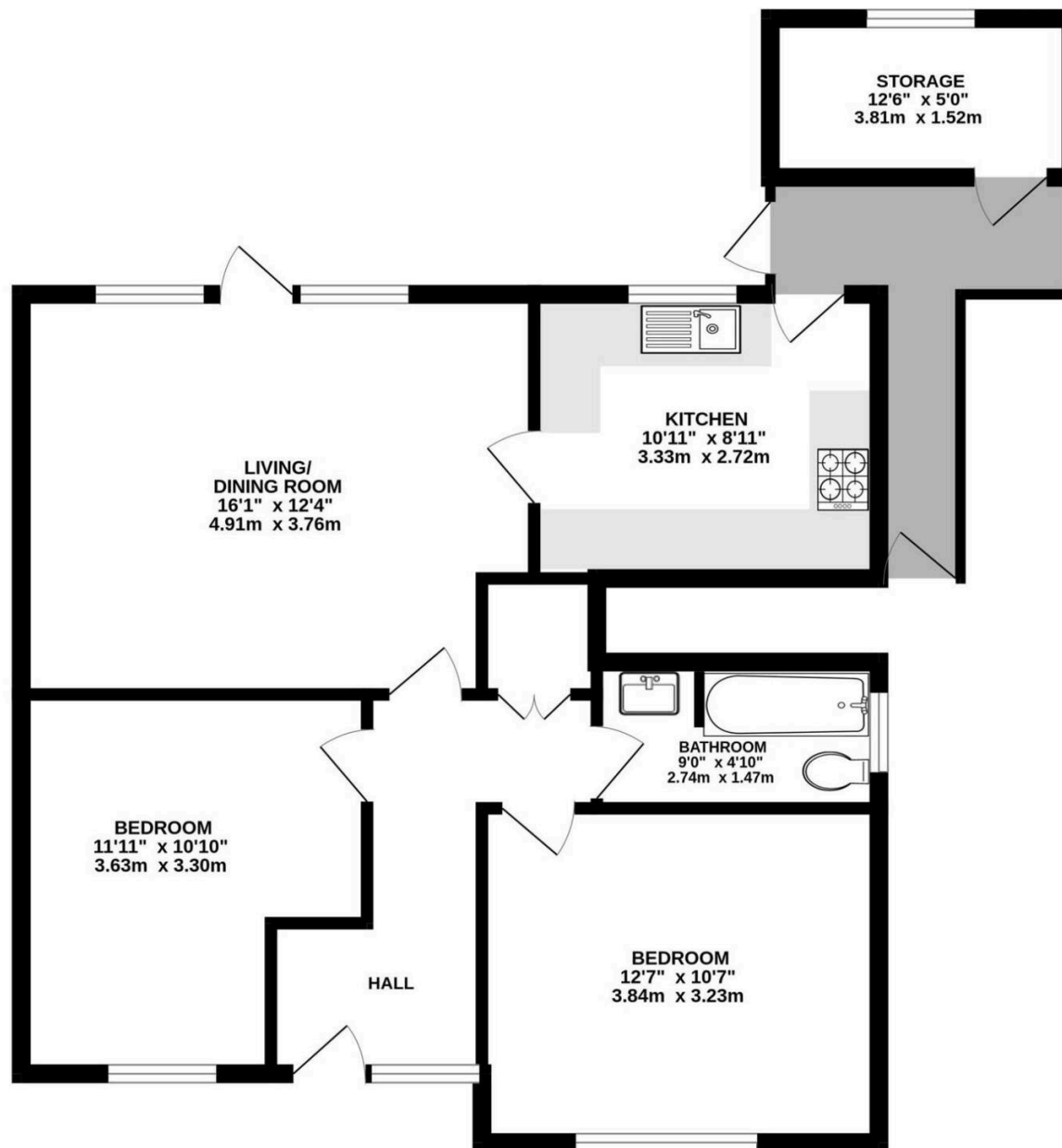
Tenure: Leasehold

EPC Energy Efficiency Rating: C

EPC Environmental Impact Rating: C







GROUND FLOOR MAISONETTE

Beaconsfield Road, Epsom

INTERNAL FLOOR AREA (APPROX.) 678 sq ft/ 63.0 sq m

Excluding Outbuilding



Jackie Quinn Estate Agents

71 The Street, Ashted - KT21 1AA

01372 271504 • ashted@jackiequinn.co.uk • www.jackiequinn.co.uk/

Jackie Quinn Estate Agents Ltd. Company number 3043609



See more of the properties we have for sale on our website

jackiequinn.co.uk

and on Zoopla, On The Market and Rightmove

A member of



Jackie Quinn
estate agents