



Withers
& Curling

9 Judge Street
Watford, WD24 5AN

£340,000

www.withersandcurling.co.uk



9 Judge Street, Watford, WD24 5AN

Tucked away within a well-established residential setting, this delightful three-bedroom period home offers bright and versatile accommodation, a generous rear garden and the opportunity to create a wonderful long-term family home.

The welcoming entrance hall leads through to an impressive reception room extending over 26ft in length. Filled with natural light, this flexible space provides ample room for both relaxing and entertaining, with attractive bay-fronted proportions enhancing the sense of character and space.

To the rear of the property, you will find the well equipped galley kitchen, which provides practical day-to-day living and the ground floor bathroom is conveniently positioned beyond.

Upstairs, the first floor offers three well-proportioned bedrooms, including two comfortable doubles and a third bedroom ideal as a nursery, guest room or home office.

Outside, the property benefits from a substantial rear garden extending to approximately 46ft, offering excellent space for outdoor dining, gardening and family enjoyment throughout the warmer months. A detached outbuilding provides useful additional storage.

Judge Street is ideally located for local shops, schools and transport links, with Watford Junction and Watford town centre within easy reach, making it an excellent choice for commuters, first-time buyers and growing families alike.



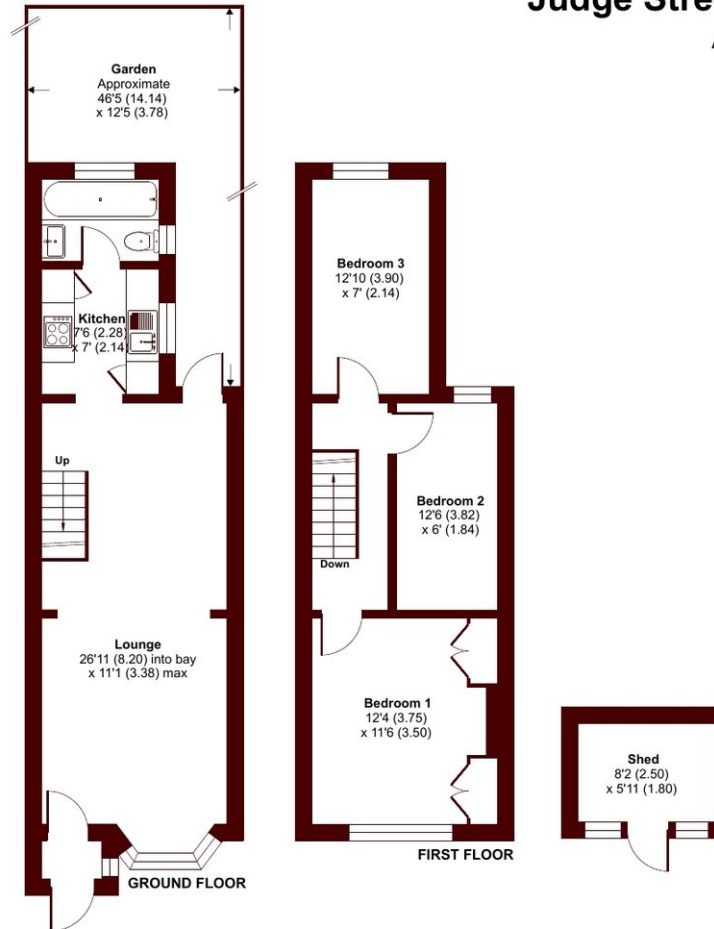
Judge Street, Watford, WD24 5AN

Approximate Area = 766 sq ft / 71.1 sq m

Garage = 48 sq ft / 4.4 sq m

Total = 814 sq ft / 75.5 sq m

For identification only - Not to scale



 Floor plan produced in accordance with RICS Property Measurement 2nd Edition, Incorporating International Property Measurement Standards (IPMS2 Residential). © nitchecom 2026. Produced for Withers & Curling. REF: 1468174