



Morland Avenue, Bromborough

£200,000



LESLEY HOOKS
ESTATE AGENTS





This three-bedroom semi-detached property occupies a prime location directly opposite Raeburn School, making it an ideal opportunity for families or buyers looking to create a long-term home in a highly desirable area.

The property is in need of full modernisation and significant renovation, having been owned by the previous gentleman for many years, during which time general upkeep became difficult to maintain. However, for those with vision, creativity, and a willingness to invest, this home offers outstanding potential.

The accommodation comprises an entrance hall, a spacious lounge, a separate dining room with patio doors leading out to the garden, and a kitchen. To the first floor, there are three bedrooms and a family bathroom.

Both the kitchen and bathroom require complete refurbishment, and the garden is currently overgrown and in need of attention. Externally, the property benefits from a driveway leading to a garage, providing useful off-road parking and storage.

This is very much a project property—ideal for someone ready to roll up their sleeves. With the right imagination, along with the necessary investment this house has all the ingredients to become a beautiful forever home.



Entrance Hall

16'5" (5m) x 5'10" (1.78m)

Lounge

16'3" (4.95m) x 12'3" (3.73m)

Dining Room

10'5" (3.18m) x 10'4" (3.15m)

Kitchen

8'8" (2.64m) x 7'11" (2.41m)

Bedroom One

14'3" (4.34m) x 11'3" (3.43m)

Bedroom Two

11'0" (3.35m) x 9'10" (3m)

Bedroom Three

8'10" (2.69m) x 8'0" (2.44m)

Bathroom

7'8" (2.34m) x 6'7" (2.01m)

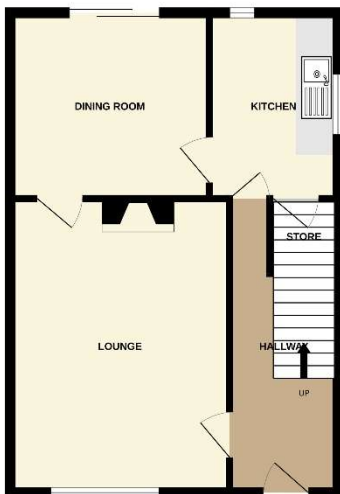






GROUND FLOOR
471 sq.ft. (43.8 sq.m.) approx.

1ST FLOOR
433 sq.ft. (40.2 sq.m.) approx.



TOTAL FLOOR AREA : 904 sq.ft. (84.0 sq.m.) approx.

Whilst every attempt has been made to ensure the accuracy of the floorplan contained here, measurements of doors, windows, rooms and any other items are approximate and no responsibility is taken for any error, omission or mis-statement. This plan is for illustrative purposes only and should be used as such by any prospective purchaser. The services, systems and appliances shown have not been tested and no guarantee as to their operability or efficiency can be given.
Made with Homestyler ©2025

Contact Us:

0151 334 5875
lesley@lesleyhooks.co.uk
 23 Allport Lane,
 Bromborough, Wirral,
 Merseyside, CH62 7HH

Disclaimer: Whilst these details are thought to be correct, their accuracy cannot be guaranteed and do not form part of any contract. It should be noted that we have not tested any fixtures, fittings, equipment, apparatus or services, therefore we cannot verify that they are in working order of fit for purpose. Solicitors should be used to confirm that any moveable items described within these details are in fact part of the sale agreement. While we try to ensure measurements are correct they are not guaranteed and purchasers are advised to take their own measurements before ordering any fixtures and fittings. Please note: if you are buying a leasehold property, please ensure that all details and conditions of the lease are checked with your solicitor prior to you incurring any costs as additional fees could be incurred for items such as leasehold packs.