



MAYNARD
ESTATES



25 St. Saviours Road, Coalville, LE67 3DF

£1,000 Per month

This beautifully refurbished end-terrace house presents an exceptional opportunity for a long term let for one lucky tenant. Situated on St. Saviours Road in Coalville, with three well-proportioned bedrooms and modern shower room, this property has been meticulously updated to a HIGH STANDARD, ensuring a comfortable and stylish living environment.

Upon entering, you are greeted by a welcoming front reception room, featuring a large window adorned with a Venetian blind and a CHARMING FIREPLACE with an oak mantle, creating a warm and inviting atmosphere. The second reception room boasts HERRINGBONE-STYLE cushioned flooring that seamlessly flows into the open-plan kitchen area. The kitchen is a true highlight, SHOWCASING a range of contemporary navy blue wall and base units complemented by a marble-style worktop. It is equipped with an integrated fridge, separate freezer, oven, grill, and a four-ring hob with an extraction hood, all enhanced by a STYLISH tiled splashback, ceiling spotlights, and under-unit lighting.

At the rear of the kitchen, a lobby provides access to a MODERN ground floor shower room, complete with a heated towel rail and ceiling spotlights, as well as a utility area with plumbing for a washing machine and counter top space for a dryer. This area continues the elegant herringbone flooring from the kitchen, ensuring a COHESIVE DESIGN throughout.

On the first floor, you will find a convenient WC and THREE BEDROOMS. The master bedroom is a generous double, featuring a period fireplace and a built-in cupboard for added storage. The two additional bedrooms are

ON THE GROUND FLOOR

Front Reception Room 11'11" x 11'9" (3.63m x 3.58m)



Rear Reception Room 12'0" x 11'8" (3.66m x 3.56m)



Open Plan Kitchen



Rear Lobby



Ground Floor Shower Room 4'6" x 8'8" (1.37m x 2.64m)



Utility Room

ON THE FIRST FLOOR

Landing

First Floor WC



Bedroom 1 12'3" x 11'11" (3.73m x 3.63m)



Bedroom 2 8'9" x 8'9" (2.67m x 2.67m)



Bedroom 3 7'6" x 9'9" (2.29m x 2.97m)



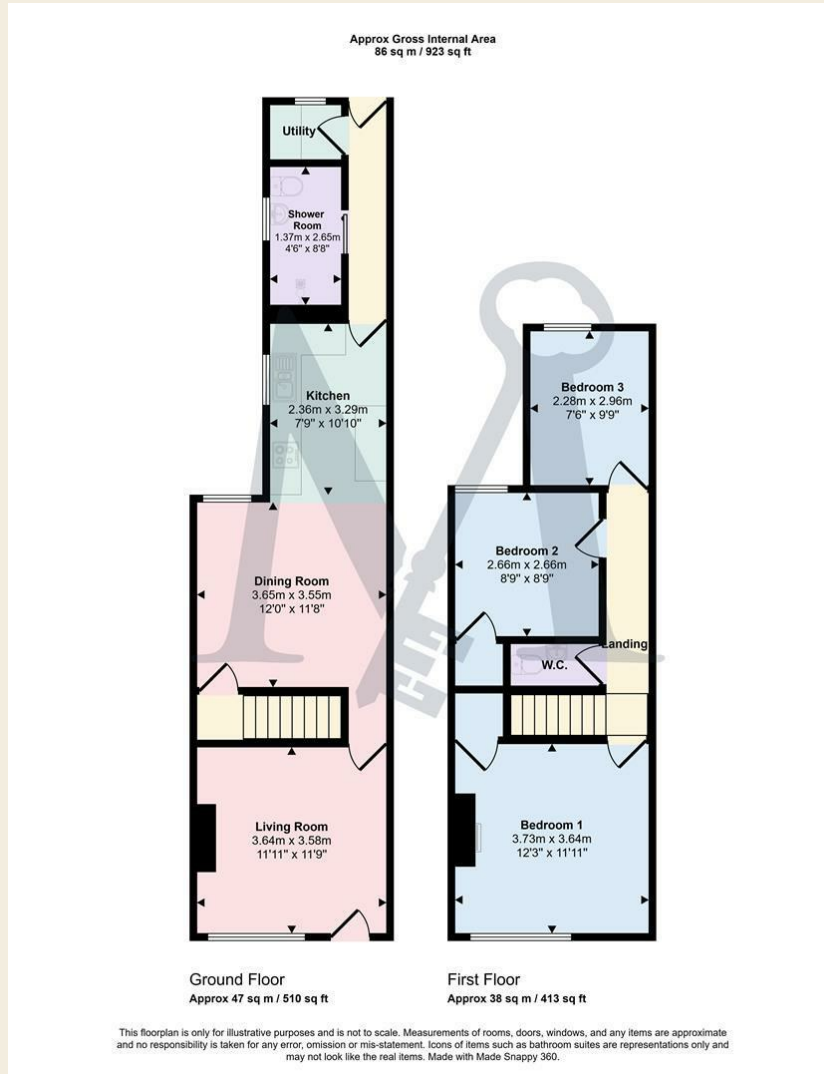
ON THE OUTSIDE



Rear Garden



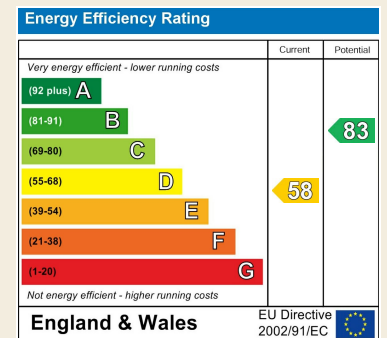
Floor Plan



Area Map



Energy Efficiency Graph



These particulars, whilst believed to be accurate are set out as a general outline only for guidance and do not constitute any part of an offer or contract. Intending purchasers should not rely on them as statements of representation of fact, but must satisfy themselves by inspection or otherwise as to their accuracy. No person in this firm's employment has the authority to make or give any representation or warranty in respect of the property.