



MAYNARD  
ESTATES



32 Wood Street  
Ashby-De-La-Zouch, LE65 1EG

£180,000



## Brief Description

Positioned at the top of the High Street in the DESIRABLE TOWN of Ashby-De-La-Zouch, this DELIGHTFUL end terrace cottage offers a perfect blend of character and modern living. With its PRIME LOCATION, you will find yourself just a short stroll away from the vibrant town centre, making it an ideal choice for those seeking convenience and community.

Upon entering, you are greeted by a newly installed front door that opens into a welcoming entrance hall. The living room is BATHED IN NATURAL LIGHT, thanks to its double aspect windows fitted with additional secondary glazing, ensuring a TRANQUIL ATMOSPHERE. A lovely feature fireplace with a WOOD-BURNING STOVE adds warmth and charm, complemented by built-in storage that enhances the room's functionality.

The KITCHEN DINER showcases a COUNTRY-STYLE design with dark green wooden units and a wooden worktop. It features a Belfast sink, a double oven, and a hexagonal BREAKFAST BAR ISLAND, perfect for casual dining. A STABLE DOOR leads you to the quaint courtyard, while ample space for appliances and an under stair pantry provide practicality.

Upstairs, you will find two GENEROUS DOUBLE BEDROOMS, both equipped with secondary glazing and built-in wardrobes, offering plenty of storage. The family bathroom is elegantly designed with a three-piece white suite, including a cast iron bath, a recently replaced oval hand basin, and partially tiled and panelled walls, creating a serene space for relaxation.

Outside, the EASILY MAINTAINED COURTYARD provides a lovely spot to enjoy a beverage in the fresh air, making it a perfect retreat after a long day.

This CHARMING COTTAGE is an ideal first-time buy or a wonderful option for those looking to downsize. Benefiting from the vibrant community of Ashby-De-La-Zouch, known for its rich history and picturesque surroundings. Residents can ENJOY LOCAL AMENITIES, including shops, parks, and schools, all within easy reach. Do not miss the chance to make this LOVELY HOUSE your new home.





ON THE FIRST FLOOR

Entrance Hall

Living Room

16'9" x 11'3" (5.11m x 3.43m)

Kitchen Diner

13'2" x 10'11" (4.01m x 3.33m)

ON THE FIRST FLOOR

Bedroom 1

16'9" x 11'3" (5.11m x 3.43m)

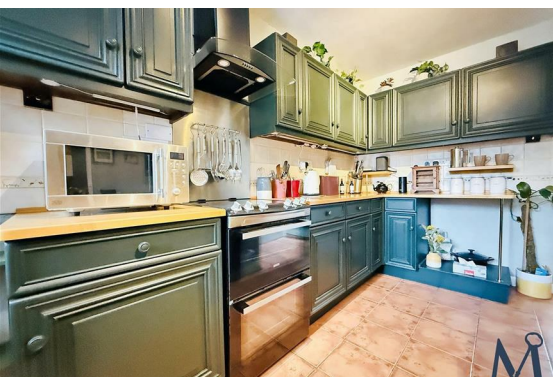
Bedroom 2

10'2" x 14'1" (3.10m x 4.29m)

Family Bathroom

ON THE OUTSIDE

Rear Courtyard





## Floor Plan



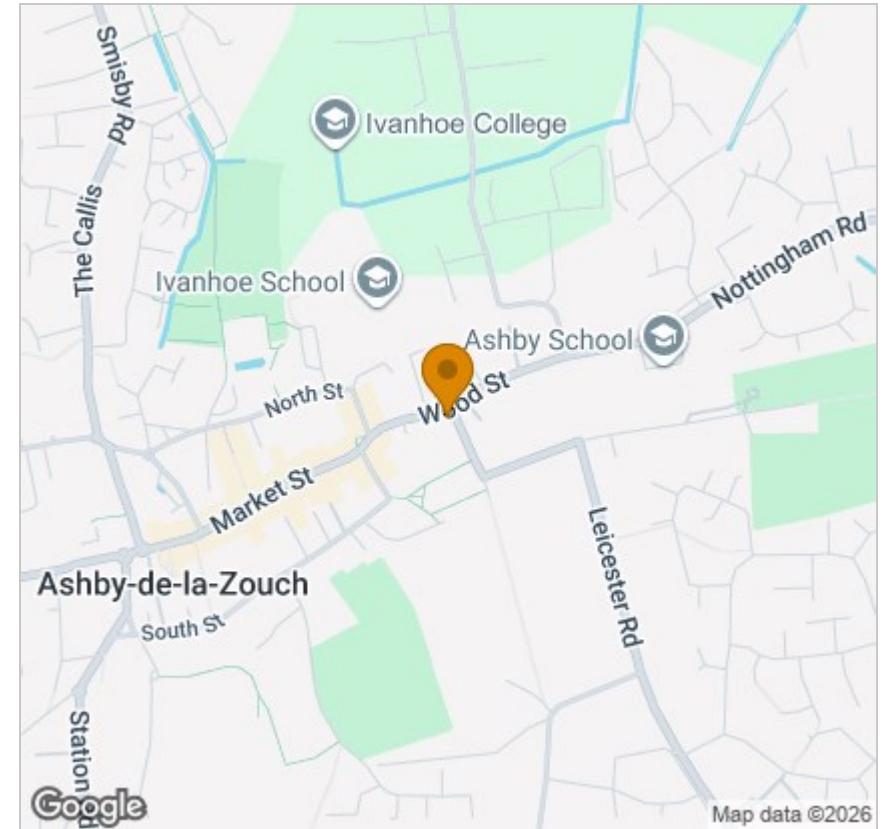
## Viewing

Please contact our Maynard Estates Office on 01530 682886 if you wish to arrange a viewing appointment for this property or require further information.

These particulars, whilst believed to be accurate are set out as a general outline only for guidance and do not constitute any part of an offer or contract. Intending purchasers should not rely on them as statements of representation of fact, but must satisfy themselves by inspection or otherwise as to their accuracy. No person in this firm's employment has the authority to make or give any representation or warranty in respect of the property.

2-4 North Street, Whitwick, Coalville, Leicestershire, LE67 5HA  
Tel: 01530 682886 Email: sales@maynardestates.co.uk maynardestates.co.uk

## Area Map



## Energy Efficiency Graph

