



118 Hermitage Road
Whitwick, Coalville, LE67 5EG

Guide price £250,000

3

1

2





Brief Description

Placed on Hermitage Road in the popular village of Whitwick, this three-bedroom detached house presents a **REMARKABLE OPPORTUNITY** for those with a vision. Although the property requires full renovation, it boasts a substantial 0.4 acrea plot that overlooks the picturesque **WHITWICK LAKES**, offering a serene backdrop for your future home.

As you enter, you are welcomed by an inviting **ENTRANCE PORCH** adorned with tiled flooring and **STAINED GLASS** windows, leading into the entrance hall through a beautifully crafted stained glass door. The hall features stairs ascending to the first floor and built-in storage.

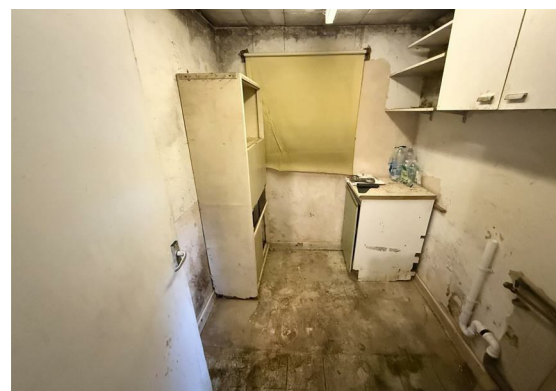
The **LIVING ROOM** is a delightful space, enhanced by a bay window, along with rear access doors that lead to the garden. The room is further complemented by wall-mounted lights, a picture rail, decorative ceiling coving, and a **PERIOD FIREPLACE** housing an electric fire. Adjacent to this is a separate **DINING ROOM**, which also showcases ceiling coving and a feature fireplace with a gas fire.

The **KITCHEN**, while in need of modernisation, retains some **CHARMING PERIOD** built-in storage and features a fireplace with a **WOOD-BURNING STOVE**, tiled flooring, and a tiled splashback. A separate **UTILITY ROOM** provides additional space for appliances, while a rear lobby grants access to the expansive garden and a convenient ground floor WC.

Ascending the **PERIOD TWIST AND TURN** staircase to the first floor, you will find three **WELL-PROPORTIONED BEDROOMS**. The master bedroom features a bay window with **LOVELY VIEWS** over the rear, along with a period fireplace and picture rail. The **FAMILY BATHROOM** completes this level, offering a three-piece suite with period tiled walls.

Externally, the property is framed by a **FRONT GARDEN** with mature trees, and a tarmac and paved **DRIVEWAY** provides off-road parking. The rear garden is a **SUBSTANTIAL**, although currently overgrown and in need of significant attention, it presents a fabulous **PLOT WITH IMMENSE POTENTIAL**.





ON THE GROUND FLOOR

Entrance Porch

Entrance Hall

Living Room
13'10" x 11'4" (4.22m x 3.45m)

Dining Room
11'8" x 11'6" (3.56m x 3.51m)

Kitchen
8'8" x 11'6" (2.64m x 3.51m)

Utility Room
6'8" x 6'1" (2.03m x 1.85m)

Rear Lobby

Ground Floor WC

ON THE FIRST FLOOR

Landing

Bedroom 1
16'5" x 11'4" (5.00m x 3.45m)

Bedroom 2
11'9" x 11'6" (3.58m x 3.51m)

Bedroom 3
8'9" x 8'5" (2.67m x 2.57m)

Family Bathroom



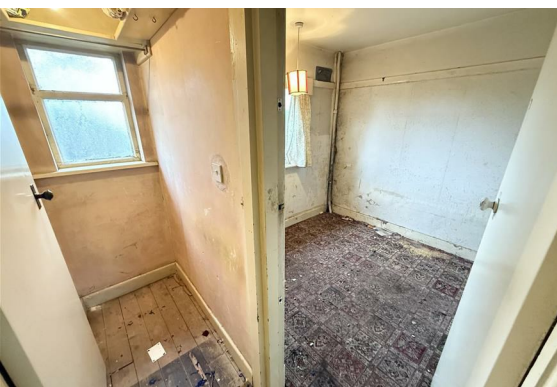
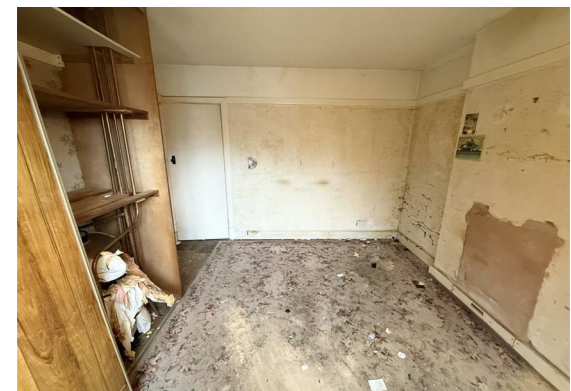
ON THE OUTSIDE

Front Garden

Driveway

Substantial Rear Garden Plot









Floor Plan



Viewing

Please contact our Maynard Estates Office on 01530 682886 if you wish to arrange a viewing appointment for this property or require further information.

These particulars, whilst believed to be accurate are set out as a general outline only for guidance and do not constitute any part of an offer or contract. Intending purchasers should not rely on them as statements of representation of fact, but must satisfy themselves by inspection or otherwise as to their accuracy. No person in this firms employment has the authority to make or give any representation or warranty in respect of the property.

2-4 North Street, Whitwick, Coalville, Leicestershire, LE67 5HA
Tel: 01530 682886 Email: sales@maynardestates.co.uk maynardestates.co.uk

Area Map



Energy Efficiency Graph

