



141

141 Hermitage Road
Whitwick, Coalville, LE67 5EL

Offers in the region of £245,000

3 1 2

Brief Description

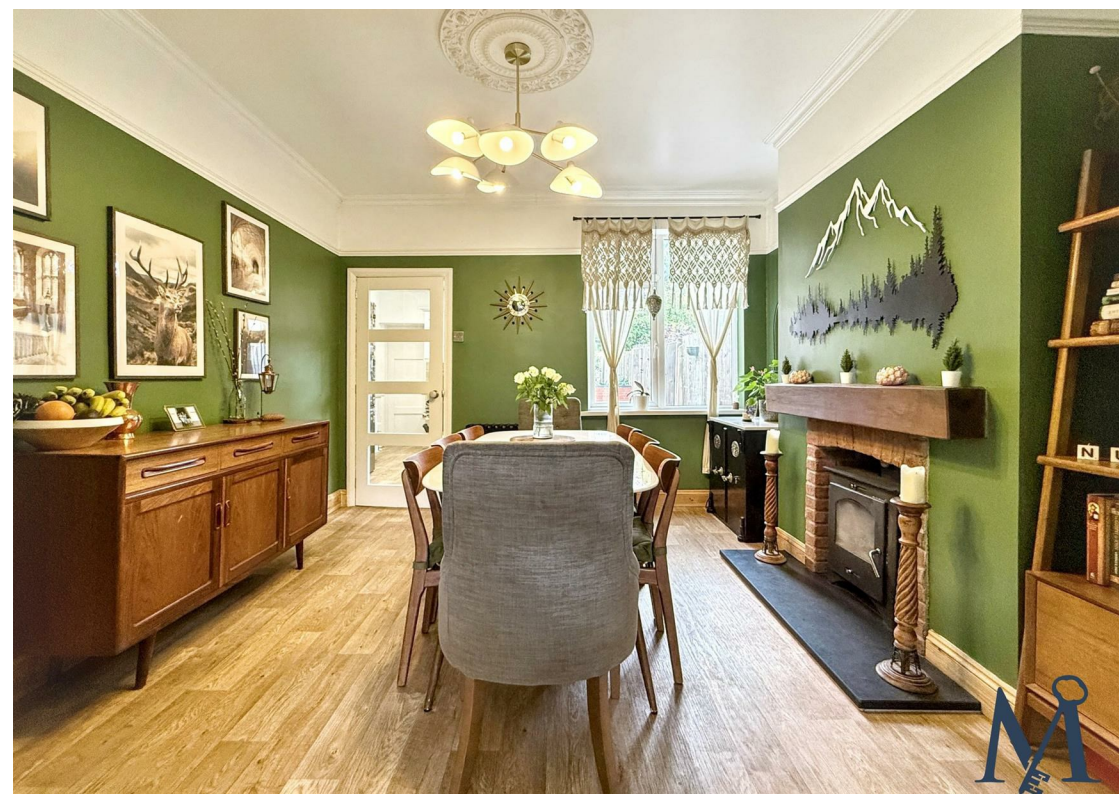
Built in the early 20th century, is this CHARMING semi-detached house on Hermitage Road in the popular village of Whitwick. The property features three generously sized double bedrooms and two versatile reception rooms. Throughout the home, you will find PERIOD FEATURES such as elegant ceiling coving, beautiful ceiling roses, and delightful fireplaces which add to the charm and appeal of this lovely residence.

As you approach the property, you are greeted by STRIKING tiled paving that leads to a solid wooden front door, opening into a welcoming entrance hall. The ground floor features two generous reception rooms, each adorned with period features such as ceiling rose and coving, enhancing the home's charm. The LIVING ROOM, with its bay window and fitted shutter blinds, is complemented by a period open fireplace, creating a warm and inviting atmosphere. The adjacent DINING ROOM, featuring a multi-fuel burning stove with an exposed brick surround, is perfect for family gatherings.

The WELL-APPOINTED KITCHEN includes a range of wall and base units, an integrated oven and grill, and ample space for a dishwasher and fridge/freezer. It also provides access to a useful under-stair PANTRY CUPBOARD and a ground floor UTILITY with a WC, as well as a door leading to the expansive rear garden.

Upstairs, the first floor landing features BESPOKE built-in storage and seating, leading to two spacious double bedrooms and a family bathroom. The bathroom is well-equipped with a three-piece suite, including a bath with an electric shower, WC, and hand basin. The second floor hosts a large double bedroom, offering elevated views and additional privacy.

The rear garden is a TRUE HIGHLIGHT, featuring paved patios, a lawn area, and brick outbuildings, all within an enclosed walled and fenced boundary, providing a perfect space for outdoor relaxation. The front yard, set back from the road, is beautifully landscaped with EYE CATCHING tiled paving, planted shrubs and a small brick wall.





ON THE GROUND FLOOR

Entrance Hall

Living Room
11'8" x 14'1" (3.56m x 4.29m)

Dining Room
11'11" x 12'1" (3.63m x 3.68m)

Kitchen
9'0" x 10'6" (2.74m x 3.20m)

Utility/WC
8'9" x 7'4" (2.67m x 2.24m)

ON THE FIRST FLOOR

Landing

Bedroom 2
10'11" x 11'11" (3.33m x 3.63m)

Bedroom 3
11'1" x 12'0" (3.38m x 3.66m)

Family Bathroom
9'0" x 10'6" (2.74m x 3.20m)

ON THE SECOND FLOOR

Landing

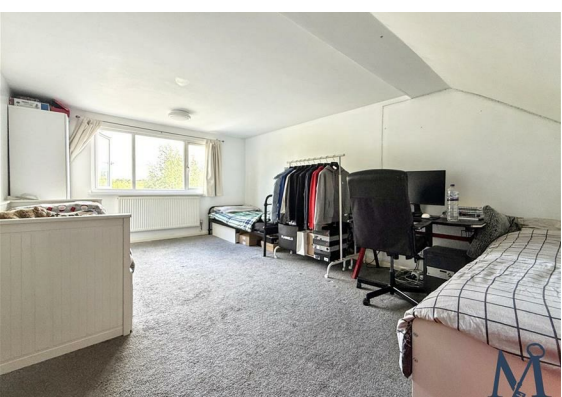
Bedroom 1
12'0" x 18'3" (3.66m x 5.56m)

ON THE OUTSIDE

Front Yard

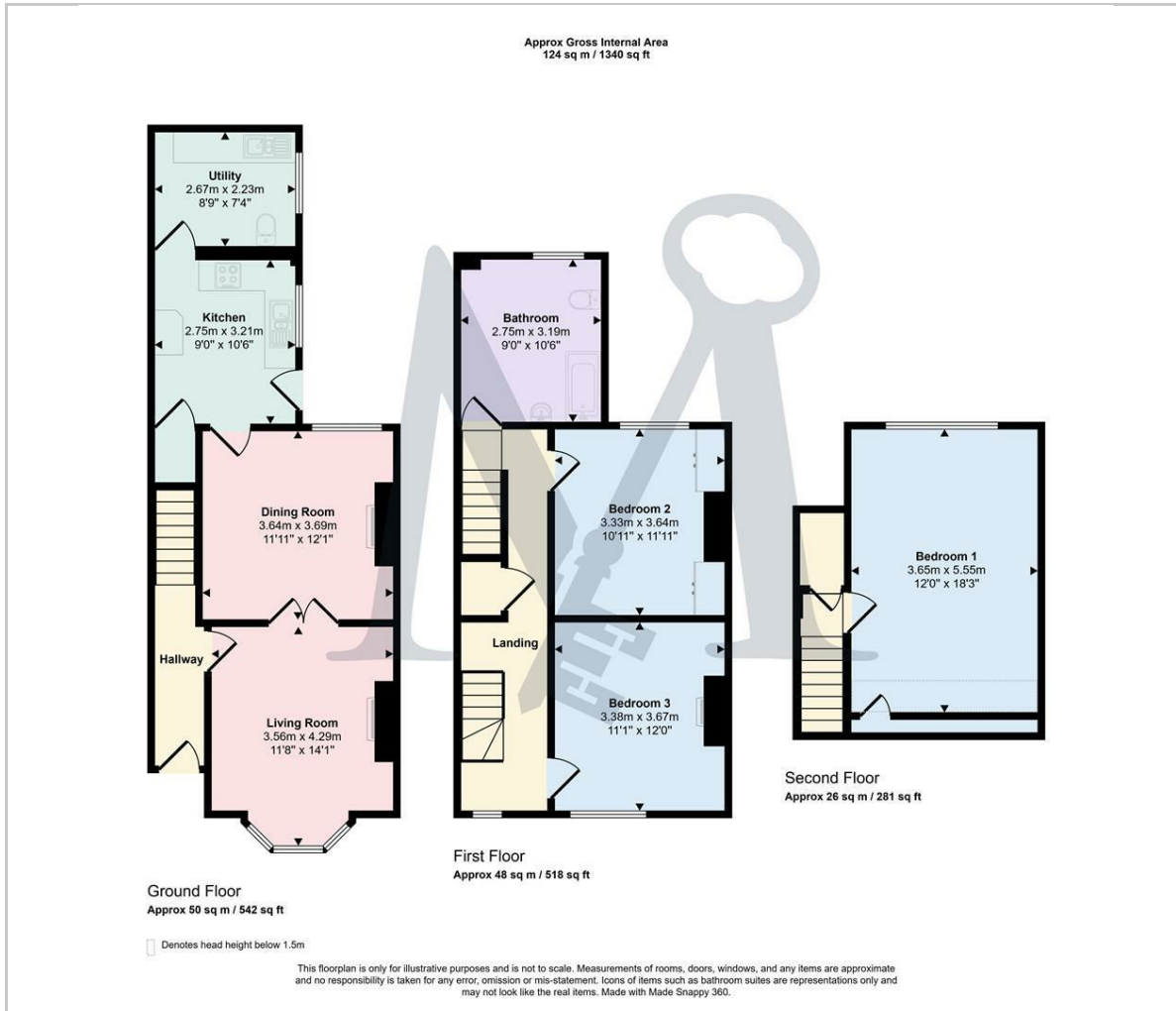
Rear Garden







Floor Plan



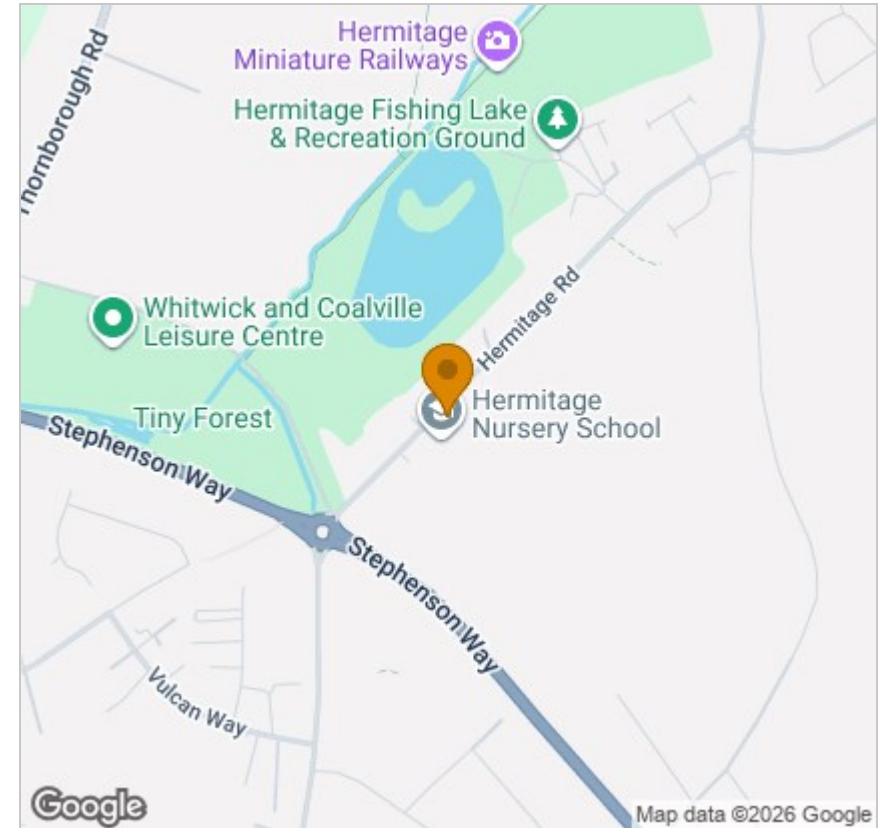
Viewing

Please contact our Maynard Estates Office on 01530 682886 if you wish to arrange a viewing appointment for this property or require further information.

These particulars, whilst believed to be accurate are set out as a general outline only for guidance and do not constitute any part of an offer or contract. Intending purchasers should not rely on them as statements of representation of fact, but must satisfy themselves by inspection or otherwise as to their accuracy. No person in this firm's employment has the authority to make or give any representation or warranty in respect of the property.

2-4 North Street, Whitwick, Coalville, Leicestershire, LE67 5HA
Tel: 01530 682886 Email: sales@maynardestates.co.uk maynardestates.co.uk

Area Map



Energy Efficiency Graph

