



45 Northfield Crescent, Longridge



45 Northfield Crescent

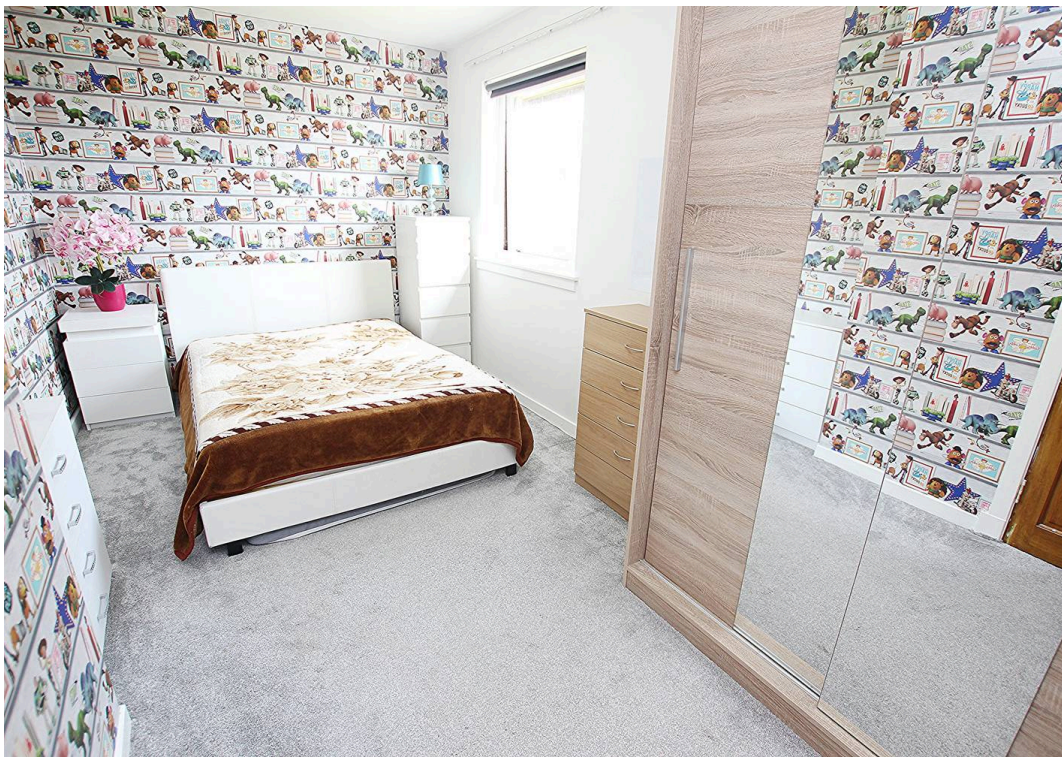
NIALL MCCABE & RE/MAX SELECT (BATHGATE) are delighted to present this exceptional 3-bedroom semi-detached residence, featuring a generous driveway, set within the highly sought-after Northfield Crescent, Longridge. The property boasts refined, bespoke interiors, contemporary finishes & an elegant, well-considered layout. Internally, the home comprises; a spacious lounge with feature fire, designer kitchen, 3 double bedrooms, a stylish family bathroom & W.C.

The lounge is an impressive space, overlooking the front aspect, beautifully styled with plush flooring, a textured tiled feature wall & statement fireplace. The room offers a versatile layout suited to both relaxation and entertaining. Adjacent, the bespoke kitchen/diner provides an exceptional setting to cook & host, thoughtfully designed with an extensive range of high-gloss base & wall units, complemented by elegant worktops and splashback. This level further benefits from a sleek 2-piece W.C. and generous storage throughout.

On the upper level, there are three beautifully proportioned double bedrooms, two enjoying a peaceful front aspect, while the principal bedroom overlooks the expansive rear garden. Each has been impeccably styled and offers flexible use to suit a variety of lifestyles. A chic family bathroom completes the level, featuring a fully enclosed bath with overhead shower, integrated jet system and built-in radio - creating a luxurious haven for relaxation.

The home is complemented by beautifully landscaped gardens to the front and rear. The front features a multi-car driveway providing ample parking, a manicured lawn and an attractive pathway—creating an elegant first impression. To the rear, the garden is expansive, private and deceptively spacious, offering a superb outdoor retreat with sun terraces, decked areas and a pristine lawn. Set at the foot of the garden is a bespoke sauna with adjoining decked terrace, forming a luxurious space to relax and entertain.







RE/MAX SELECT – *By Niall McCabe*

6 Whitburn Road, Bathgate – EH48 1HH

01506 532684 • bathgate@remax-scotland.homes •

All information provided is for general guidance only and is not intended to form part of any contract. While every effort has been made to ensure accuracy, details may be subject to change and should be independently verified.

Measurements, descriptions and imagery are approximate, and prospective purchasers are advised to carry out their own due diligence.