





Property Summary

Enormous ground floor flat available to rent on the sought-after Blackheath side of SE13, just a 1 mile from the vibrant Blackheath Village. Three bedrooms, bathroom, modern fitted kitchen and a 19ft Living room. The flat has its own front door and off street parking to the front as well as private outside space for your enjoyment.

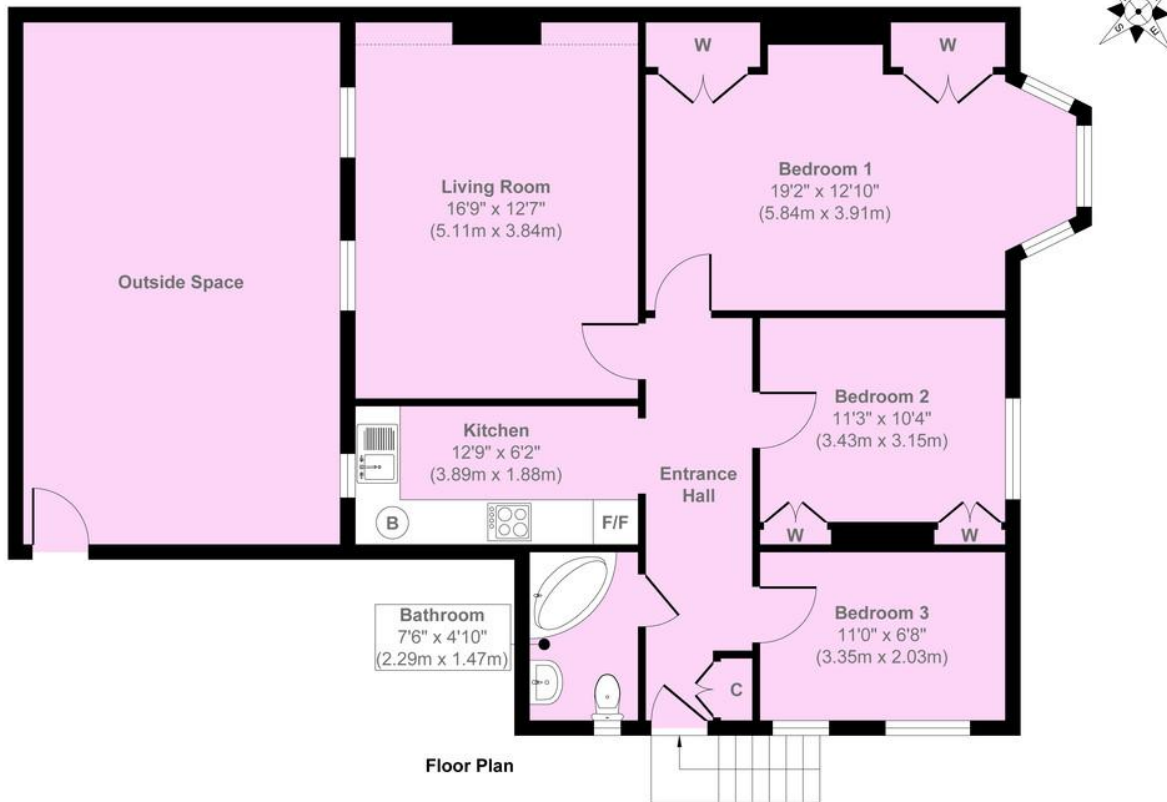
#AskBeaumont #Lewisham #SE13 #Blackheath

Property Features

- Ground floor flat
- Three bedrooms
- 16'9x12'7 Living Room
- Fitted kitchen
- Modern bathroom
- Bedrooms with window shutters
- 79 Sq M
- 1/2 Mile from Lewisham Zone 2 Stn
- 1 Mile from Blackheath Village
- Suits 2 sharers or 1x family







Floor Plan

Approx. Gross Internal Floor Area 857 sq. ft / 79.61 sq. m

Illustration for identification purposes only, measurements are approximate, not to scale.

Copyright © markbeaumont.com
Produced by Elements Property

Score	Energy rating	Current	Potential
92+	A		
81-91	B		
69-80	C	70 C	79 C
55-68	D		
39-54	E		
21-38	F		
1-20	G		