



## 17 Willow Way, Bedford, MK45 1LL

Guide price **£600,000**

Guide Price £600,000 to £625,000

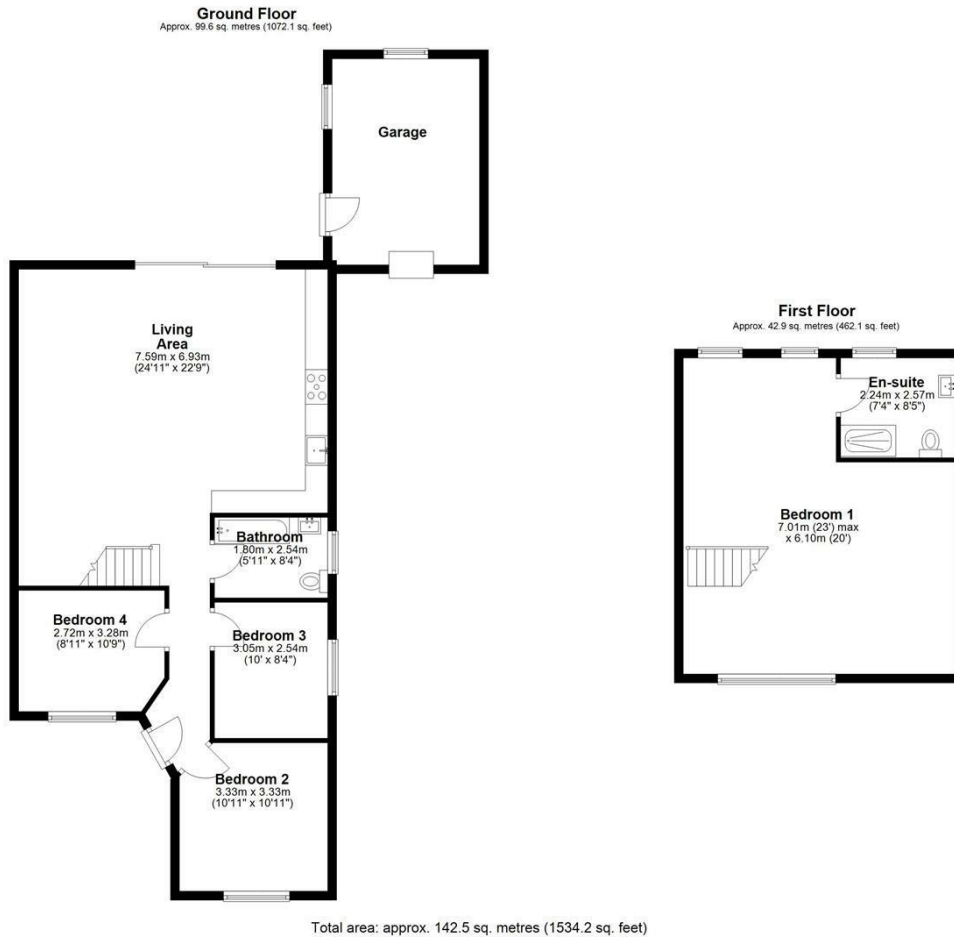
Located in Flitwick is this chain-free, extended, four bedroom, semi-detached bungalow, with a garage and parking.

Step into the entrance hall, where solid wooden flooring leads through to an impressive open-plan lounge, dining area and kitchen. Large sliding doors provide a picturesque outlook over the garden, stream and surrounding fields, seamlessly bringing the outdoors in.

The kitchen has a contemporary feel with blue cabinetry and is fitted with a double oven, induction hob, as well as an integrated fridge freezer and washing machine. The lounge and dining area flow from the kitchen, offering flexible options for arranging furniture. For those seeking a cosier reception room, one of the bedrooms could alternatively be used as a separate lounge. The ground floor



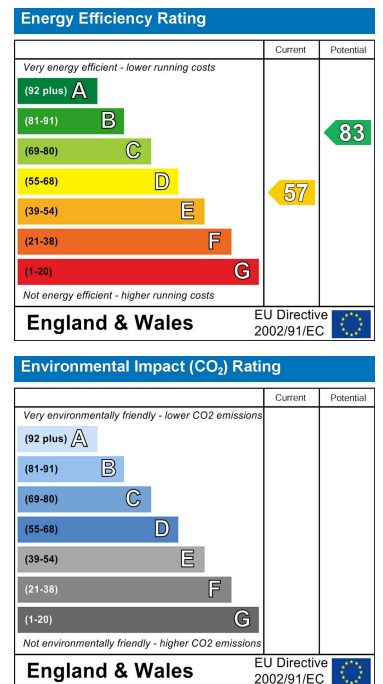
## Floor Plan



## Area Map



## Energy Efficiency Graph



These particulars, whilst believed to be accurate are set out as a general outline only for guidance and do not constitute any part of an offer or contract. Intending purchasers should not rely on them as statements of representation of fact, but must satisfy themselves by inspection or otherwise as to their accuracy. No person in this firm's employment has the authority to make or give any representation or warranty in respect of the property.