



## 8 Chagny Close, Letchworth Garden City, SG6 4BY

**£375,000**

Located in Letchworth, is this end-of-terrace, three bedroom property with allocated parking.

Step inside an entrance porch with space to hang coats and bags. Continuing through, you'll find a bright and welcoming lounge with wooden flooring underfoot. To the rear is a kitchen/diner, ideal for hosting family and friends.

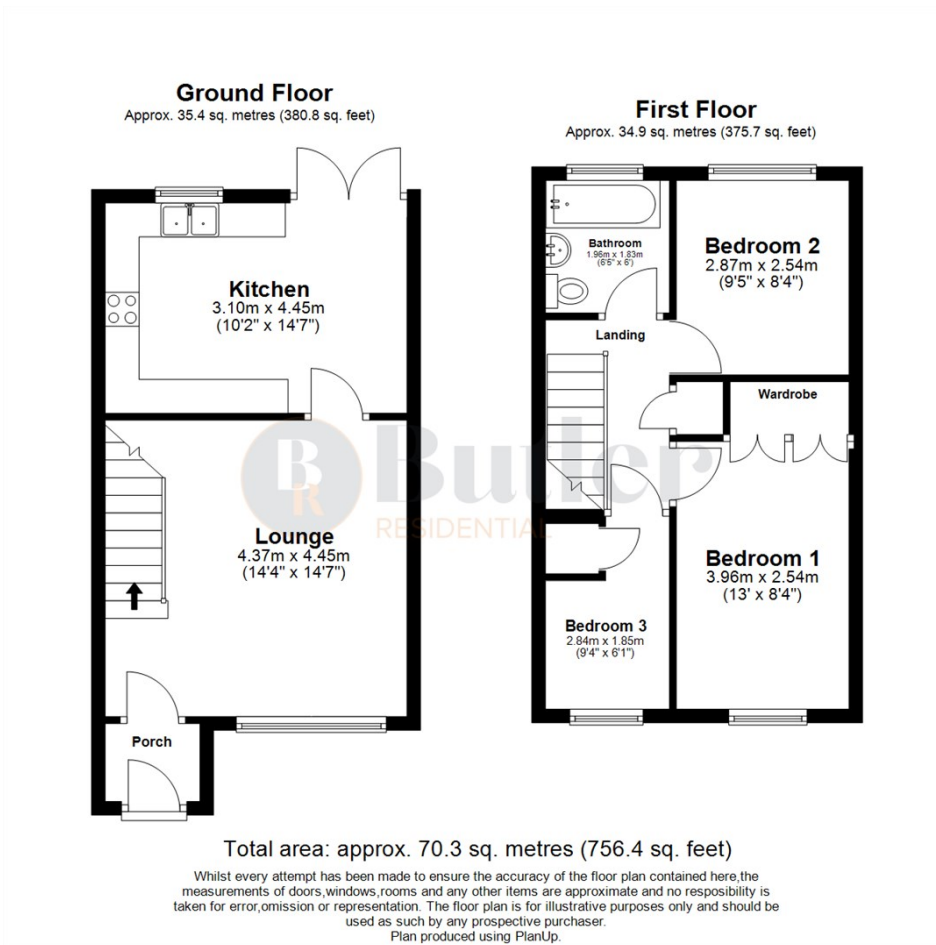
The kitchen has been finished with sleek, handle less units, featuring strip lighting beneath the worktops and metro-style tiling. Appliances are integrated and include a fridge-freezer, dishwasher, and washing machine. Adjacent to the kitchen is a dining area offering views over the garden.

Upstairs, there are three bedrooms. Bedroom one features built-in mirrored wardrobes, while bedroom three also benefits from built-in storage. Completing the living space is a modern three-piece

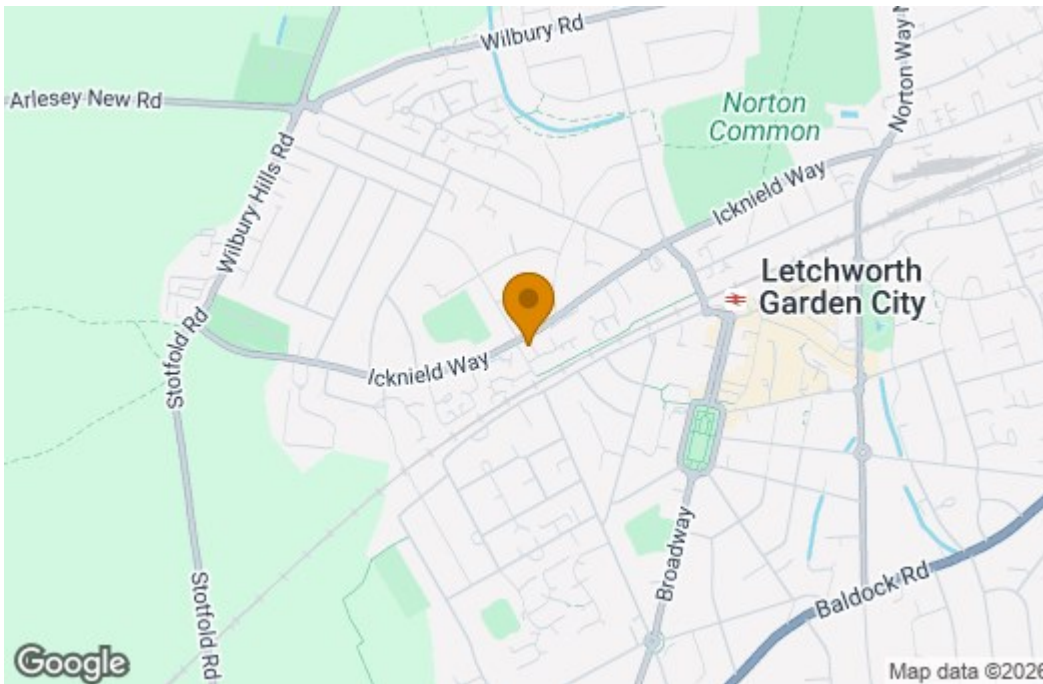
**Agent Note**

The property is currently leasehold and the seller has informed us they are in the process of buying the Freehold.

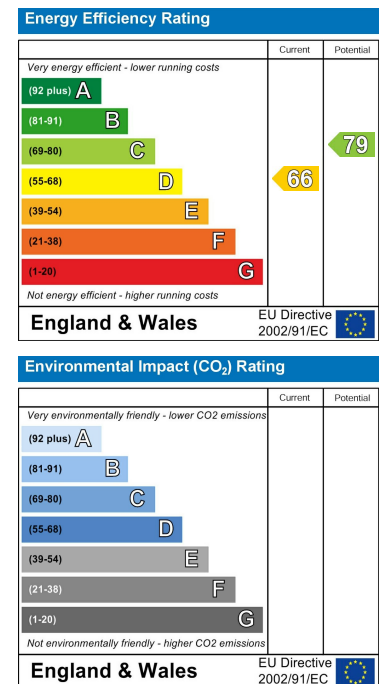
## Floor Plan



## Area Map



## Energy Efficiency Graph



These particulars, whilst believed to be accurate are set out as a general outline only for guidance and do not constitute any part of an offer or contract. Intending purchasers should not rely on them as statements of representation of fact, but must satisfy themselves by inspection or otherwise as to their accuracy. No person in this firm's employment has the authority to make or give any representation or warranty in respect of the property.