



Pound Lane, Dorchester

Dorchester

£200,000

Bedrooms: 2

Bathrooms: 1

Receptions: 1

Enjoying wonderful far-reaching countryside views, this beautifully presented first floor apartment offers spacious and light-filled accommodation in a popular position within Fordington, just a short distance from Dorchester town centre.

The apartment is accessed via a communal entrance and opens into a welcoming hallway with useful built-in storage cupboards. The sitting room is a particularly attractive space, enjoying an elevated outlook across the surrounding countryside, creating a wonderful sense of space and tranquillity.

The kitchen has been updated in recent years and is fitted with a range of eye and base level units with space for freestanding appliances. Like the sitting room, it enjoys lovely open views across the surrounding landscape.

There are two generous double bedrooms, with the principal bedroom benefiting from a dual aspect, allowing plenty of natural light throughout the day. The bathroom has also been modernised and comprises a panel enclosed bath with shower over, wash hand basin and W.C.

Outside, residents enjoy access to well-maintained communal gardens, whilst the property also benefits from a garage located in a nearby block.



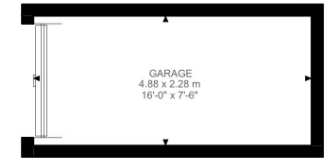
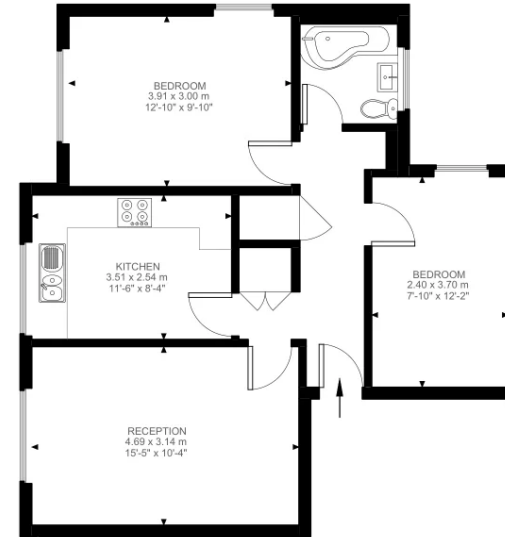


Situation

Stonehouse Court enjoys a convenient position within the sought-after area of Fordington, offering easy access to Dorchester town centre, Dorset County Hospital and a range of local amenities. Dorchester provides an excellent selection of shops, cafés, restaurants, leisure facilities and transport links, including direct rail services to London Waterloo and Bristol Temple Meads.

Surrounded by beautiful Dorset countryside, the area offers numerous walking routes and green spaces, whilst remaining within easy reach of everything the county town has to offer.





First Floor
637 ft²

Pound Lane, DT1
Approximate Gross Internal Area
59.17 SQ.M / 637 SQ.FT
(EXCLUDING GARAGE)
GARAGE: 11.12 SQ.M / 120 SQ.FT
INCLUSIVE TOTAL AREA 70.29 SQ.M / 757 SQ.FT

