



Glyde Path House, Dorchester

Dorchester

Guide Price

£210,000

Bedrooms: 2

Bathrooms: 2

Receptions: 1

This modern ground floor apartment enjoys a convenient position just a short walk from Dorchester town centre, Brewery Square and both Dorchester South and Dorchester West train stations. Offering well-presented accommodation throughout, the property benefits from allocated parking, two bathrooms and a spacious open-plan living area.

The current owners have thoughtfully enhanced the property during their ownership, including upgrading the electric heating system. The modern heaters benefit from Wi-Fi controls, allowing temperatures to be managed remotely and providing improved efficiency and convenience.

Accessed via a secure communal entrance with intercom system, the apartment opens into a welcoming entrance hall. The heart of the home is the generous open-plan kitchen, dining and living space, designed to maximise natural light and provide a sociable layout for everyday living.

The kitchen is fitted with a range of eye and base level units and includes an integrated fridge/freezer, dishwasher, washer/dryer, electric oven, hob and extractor hood.

There are two bedrooms, including a principal bedroom with en-suite shower room. The family bathroom is finished with tiled flooring and a heated towel rail, matching the en-suite.





Outside, the property benefits from one allocated parking space and access to a communal bicycle store.

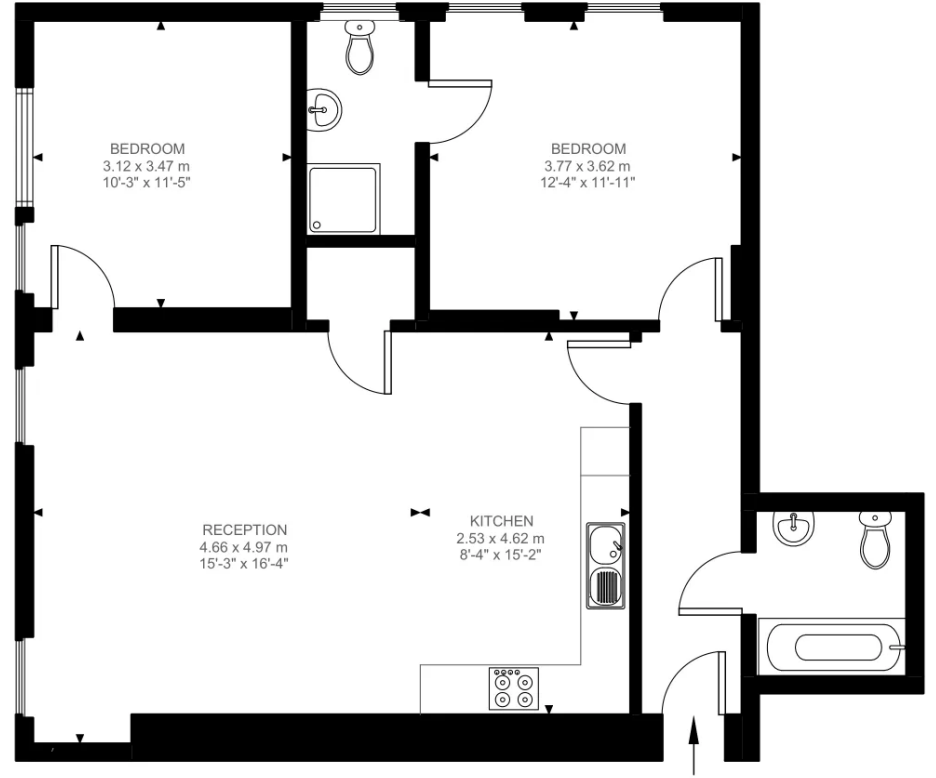
Situation

Glyde Path Road is ideally positioned within easy walking distance of Dorchester town centre and the popular Brewery Square development, home to a range of restaurants, cafés, bars, an Odeon cinema and leisure facilities. Dorset County Hospital is also nearby.

Dorchester, the county town of Dorset, offers an excellent range of shopping, educational and recreational amenities, together with a wealth of character and history. There are a number of highly regarded schools within the area, including Manor Park First School and St Osmund's CE Middle School.

For commuters, Dorchester South provides direct services to London Waterloo, whilst Dorchester West offers routes to Bristol Temple Meads. The A35 also provides convenient access to Weymouth, Poole and Bournemouth.





Ground Floor
822 ft²

Glyde Path Road, DT1
Approximate Gross Internal Area
76.41 SQ.M / 822 SQ.FT