



The Pump House, Muston Farm, Piddlehinton

Dorchester

£625,000

A beautifully renovated and deceptively spacious home, set in a peaceful rural position with far-reaching countryside views, offering flexible accommodation including annexe potential, generous outside space and modern open-plan living.

The Pump House is an attractive 1960s property that has been thoughtfully updated to create a light, contemporary home, perfectly suited to modern living while enjoying its idyllic countryside setting.

At the heart of the home is a stunning open-plan kitchen/dining/sitting room — a wonderfully social space designed for everyday living and entertaining. The kitchen is fitted with a range of modern units and integrated appliances including a washing machine, dishwasher, electric hob and extractor. Underfloor heating runs throughout this space, creating a warm and comfortable environment, complemented by sound insulation for added privacy and comfort. French doors open directly onto the garden, allowing natural light to flood in and seamlessly connecting indoor and outdoor living.

The ground floor also offers a versatile third bedroom with en suite shower room, currently used as a snug. This space lends itself beautifully to annexe potential, guest accommodation or multi-generational living.

Upstairs, the property continues to impress with two well-proportioned bedrooms. The principal bedroom benefits from an en suite bathroom with shower over, while bedroom two enjoys its own en suite shower room, providing excellent comfort and convenience.





Outside, the property is approached via a gravelled driveway with gated access, offering ample parking. The garden has been thoughtfully arranged with a combination of patio seating areas, lawn, and a dedicated vegetable garden – ideal for those seeking a more self-sufficient lifestyle. There is also a shed and oil tank, and the garden enjoys uninterrupted views over the surrounding countryside, creating a truly peaceful setting.

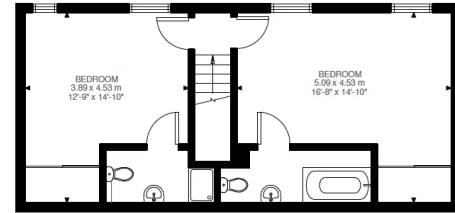
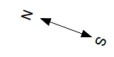
The Pump House is located on the edge of Muston Farm, just a short distance from the centre of the charming village of Piddlehinton, nestled within the highly sought-after Piddle Valley.

Piddlehinton offers a wonderful sense of community, with a parish church, village hall and the well-regarded Thimble Inn public house. Nearby Piddletrenthide, approximately one mile away, provides further amenities including a village shop, hair salon, public house and the highly regarded Piddle Valley First School.

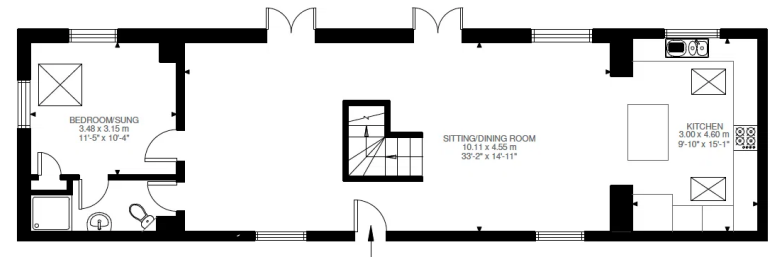
The county town of Dorchester lies approximately five miles to the south, offering a comprehensive range of shops, restaurants, schools, and a mainline railway station with direct links to London Waterloo. The historic Abbey town of Sherborne lies to the north, while the stunning Jurassic Coast and the seaside town of Weymouth are easily accessible to the south.

The surrounding area is renowned for its outdoor lifestyle, with excellent opportunities for walking, riding and cycling, as well as golf at Dorchester and Sherborne, and sailing along the beautiful Dorset coastline.





First Floor
496 ft²



Ground Floor
860 ft²

Muston Farm, DT2
 Approximate Gross Internal Area
 126.04 SQ.M / 1357 SQ.FT

Illustration for identification purposes only. Not to scale.
 Floor Plan Drawn According To RICS Guidelines.