



Fleur De Lis, Poundbury

Dorchester

Bedrooms: 2 | Bathrooms: 1 | Receptions: 1

A beautifully presented ground floor two-bedroom apartment set within Fleur-de-Lis, a luxury development of retirement properties developed by Renaissance Retirement and located on the prestigious Poundbury estate. Designed exclusively for the over-55s, Fleur-de-Lis combines elegant architecture with modern facilities, offering residents both comfort and peace of mind.

Situated in a prominent position at the entrance to Poundbury, the apartment enjoys well-planned accommodation and a light, airy feel throughout.

The welcoming entrance hallway leads to a spacious sitting room with double-aspect windows, feature electric fire with surround, and ample space for both seating and dining. The kitchen is fitted with a modern range of units and integrated appliances, including a fridge freezer, electric hob, extractor fan and free standing washing machine,

The master bedroom is a generous double with fitted wardrobes, while the second bedroom also offers excellent storage with built-in cupboards. The bathroom is stylishly appointed with a white suite, bath with shower over, heated towel rail, full tiling, and contemporary fittings.

The property benefits from electric heating, double glazing throughout, and the convenience of ground floor living.



About Fleur-de-Lis

Fleur-de-Lis has been thoughtfully designed for retired living, with facilities including:

24-hour emergency response system

A welcoming reception and Development Secretary for added support

Elegant communal spaces and landscaped surroundings

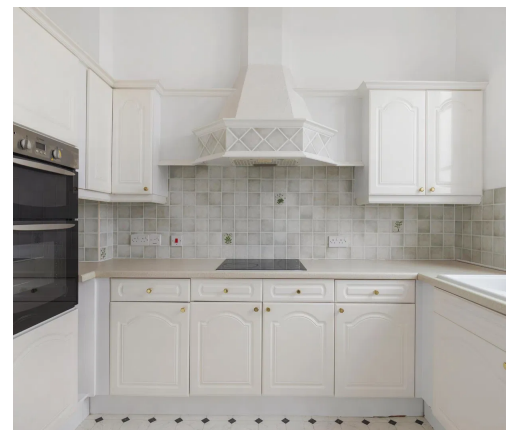
The philosophy of Poundbury, built under the guidance of the Duchy of Cornwall, is to reflect the traditions of an English village, with attractive architecture, careful planning, and a strong sense of community. Fleur-de-Lis sits at the very heart of this, offering a beautiful place to live with shops, cafés, a post office, Waitrose, and regular community events all just a short stroll away.





Poundbury is one of Dorset's most distinctive and desirable places to live, known for its elegant streets, independent shops, cafés, and strong community feel. With weekly farmers' markets, pretty squares, and green spaces, it combines traditional charm with modern convenience.

Just a short walk or bus ride away, Dorchester – the county town of Dorset – offers an even wider range of amenities. From the boutique shops, restaurants and cinema at Brewery Square to museums, cultural attractions, and two mainline railway stations with direct links to London and Bristol, Dorchester is a thriving town with something for everyone. The town also enjoys easy access to the stunning Jurassic Coast and Dorset's rolling countryside, making this location perfect for both convenience and leisure.



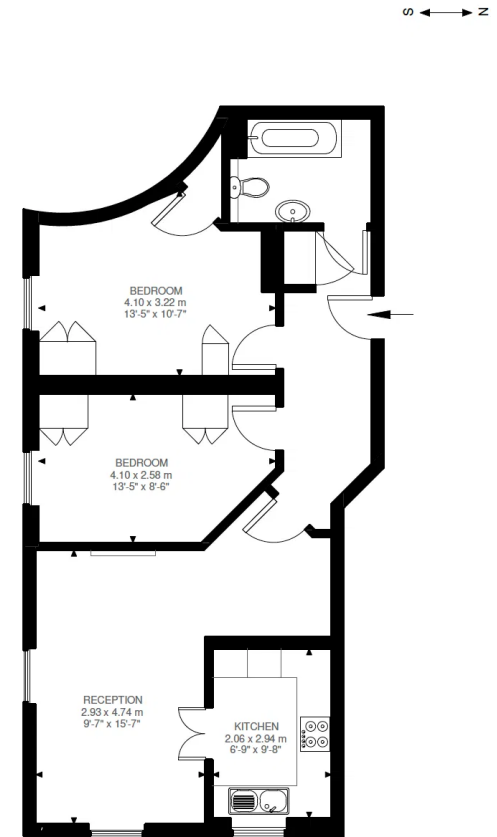


Illustration for identification purposes only. Not to scale.
Floor Plan Drawn According To RICS Guidelines.

Max 25 Limited

Culliford Road North Dorchester DT1 1QG

07880 803 366

claire@max25.co.uk

<https://max25.co.uk>