



**PAUL COUTTS**  
ESTATE AGENCY

Paul Coutts Estate Agency Ltd  
102 Brudes Hill  
Inverness  
IV3 8AT



# The Schoolhouse, Ankerville Street, Tain, Ross-Shire IV19 1BL

Offers Over £260,000

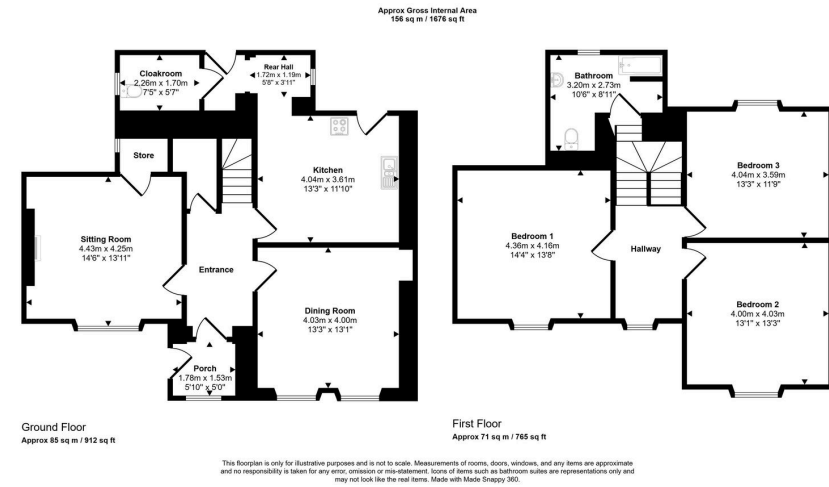
🛏 3 🚿 2 🛋 2





- Large 3 Bedroom Stone House
- Home Report under EPC Link
- Large Mature Garden
- Off Street Parking
- Stunning Views To The Sea
- Close to Local Amenities
- Character Property
- Viewing Recommended





The Schoolhouse is located in the conservation area of the historic town of Tain. The grand stone built house sits on a corner plot with views over countryside and over the Dornoch Firth. The property is in need of modernisation whilst still maintaining the original features in the property. Built in 1900 the property comprises:- three bedrooms, bathroom, kitchen, dining room and sitting room, set in a large mature garden with stone outbuilding and off street parking.

